

ALUZ  
Architectural Lighting

# A1

**A1 Series** Surface



**Discover a brand new world of  
accent lighting possibilities.**

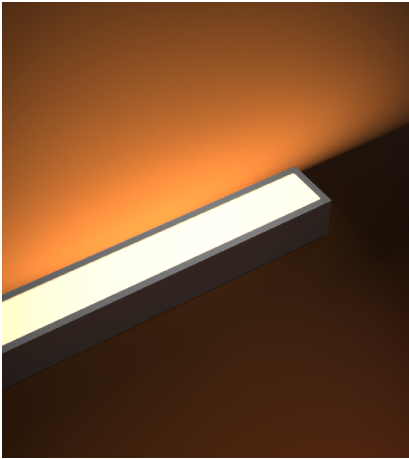
Say hello to ALUZ – the preferred  
partner of lighting professionals.  
We manufacture architectural  
lighting solutions to your exact  
specifications.

**ALUZ**

**Architectural Lighting**

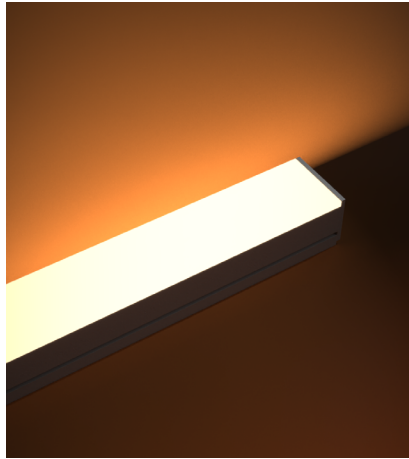
# Designers Guide to Surface Lighting Solutions A1 Series





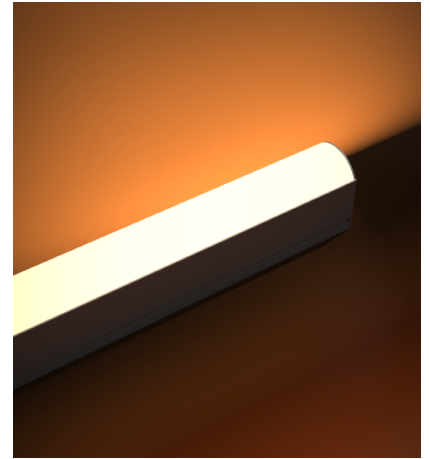
## ZAKY

Choose ZAKY for **LOW VOLTAGE**, the **smallest profile**, and unbelievable configuration options with line of light or optics lens. ZAKY solutions go up to **650 delivered lumens** per foot with a variety of channels for standard, corner, or wall mount solutions.



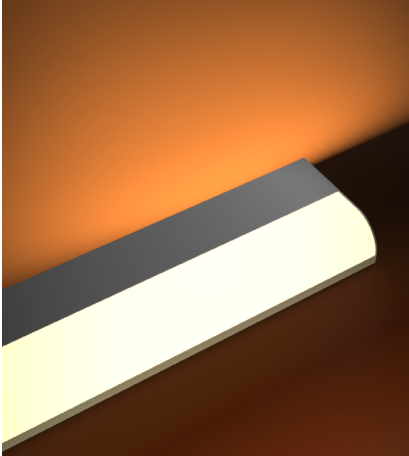
## ZUCO

When looking for **LOW VOLTAGE** and **small profile** products with line of light and a variety of optics, look no further than ZUCO. The powerful small profile ZUCO family delivers up to **1500 delivered lumens** per foot with remote driver.



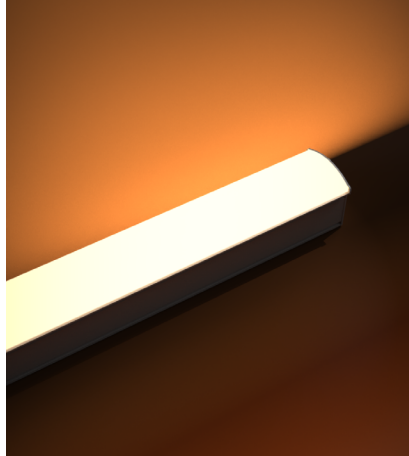
## ZYZY

Choose ZYZY for **LINE VOLTAGE modular** lighting solutions. Each configuration can be manufactured to your exact length with line of light. A powerful lighting solution with up to **1500 delivered lumens** per foot with **replaceable** LED board and driver.



## ZADY

ZADY is the perfect **LINE VOLTAGE** modular **undercabinet** lighting solutions. Each configuration can be built to your exact length while powerfully delivering up to **1500 delivered lumens** per foot with replaceable **drivers** and **LED boards**.



## ZAFU

Unlock ZAFU **LINE VOLTAGE** luminaire possibilities with a variety of **optics**, and replaceable LED board and driver. A powerful lighting solution with up to **1500 delivered lumens** per foot, built to the inch.



## ZENU

The perfect family of **LINE VOLTAGE** products for corner lighting is ZENU with line of light, a variety of **optics**, and replaceable LED board and driver. Powerfully delivering up to **1500 delivered lumens** per foot, built to the inch.



## ZOVA

Your key to unlocking possibilities for **LINE VOLTAGE** standard **grazing** and **wall washing** is ZOVA with powerful individual optics. A powerful lighting solution with up to **1500 delivered lumens** per foot, **replaceable** LED board and driver, and built to the inch.



## ZIBI

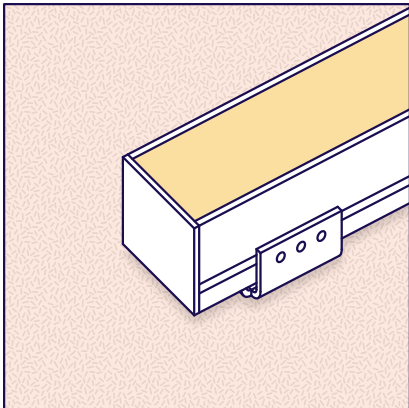
ZIBI is ideal for **LINE VOLTAGE** **extreme condition** with a **tempered glass lens** and individual optics. A powerful lighting solution with up to **2200 delivered lumens** per foot, replaceable LED board and driver.





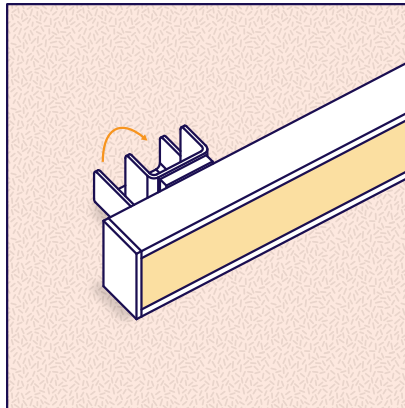
# MOUNTING STYLES

Mounting accessories have been thoughtfully designed to overcome installation obstacles. Multiple design ideas can be achieved with these versatile solutions.



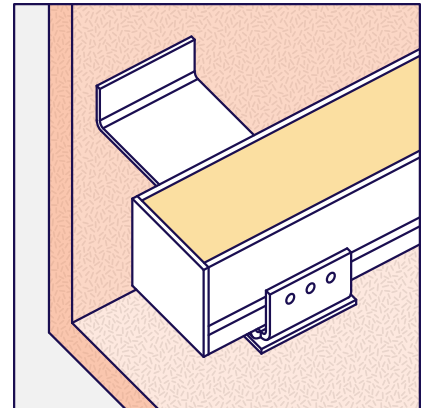
## Standard Mounting

For surface installations, this option will mount the fixture to illuminate a variety of spaces.



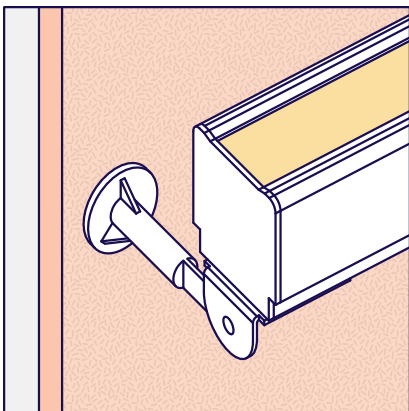
## Adjustable Angle Mounting

For surface installations that require on-site flexibility to aim the beam direction.



## Extended Mounting

For wide cove spaces this option will mount the fixture to illuminate spaces that are hard to reach.



## Adjustable Arm Mounting

Illuminate spaces with upward or downward grazing & wall wash lighting. The tilting feature adjusts the beam direction for your design.







# ALUZ

Architectural Lighting

1170 N Red Gum St, Anaheim, CA 92806 | 866.ALUZ.LTG | [aluz.lighting](http://aluz.lighting)