



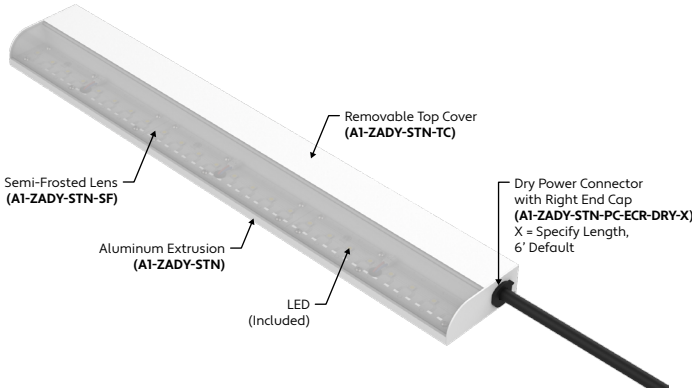
SINGLE
BIN
+30K

RoHS
COMPLIANT

DRY
DAMP

✓ TM-30
✓ LM-79
✓ LM-80

CLOSET
RATED



END VIEWS / DIMENSIONS



LENS / OPTICS APPEARANCE

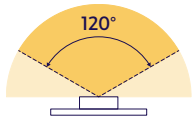


50% Semi-Frosted Lens (SF)
Slight Diode Image
0% Loss Factor



100% Frosted Lens (F)
No Diode Image: Line of Light
15.6% Loss Factor

BEAM ANGLE



120° x 120° Beam

GENERAL FEATURES

Applications	Under-Cabinet and Indirect Lighting
Lens	50% Semi-Frosted or 100% Frosted
Length	Built to Order (1'-6" Minimum Length 2'-0" Minimum Length if DMX or DALI Dimming)
Construction	Aluminum Extrusion
Weight	1.22 lbs per foot
Mounting	Mounting Channel
Listing	Dry or Damp Location UL1598, CSA C22.2#250.0 UL8750, CSA250 UL2108, 67.1.9, 60.4, CSA C22.2 #9
Driver	Integral (Consult factory for remote driver options)
Closet Rating	Up to 3.6 Watts per Foot Maximum
Temperature Ratings	Operating / Startup: -20° to 48°C (-4° to 120°F) Storage: -40° to 76°C (-40° to 170°F)

Installation Link

ELECTRICAL

Dimming	0-10V, Forward Phase, DMX, DALI
Maximum Run (Line Voltage Integral Driver)	100' (1.5W, 2W, 3W), 80' (4W), 64' (5W), 53' (6W), 40' (8W), 26' (12W)
Luminaire Voltage	120V - 277V (UNV) 120V (Forward Phase Dimming Only)

SPECIFY PRODUCT CODE | CHOOSE FROM DROP DOWNS

Series	Lens / Optics	Finish	CCT LED	Watts per Foot	Dimming	Feed Point	Listing	Luminaire Voltage	Rocker Switch ⁷	Occ. Sensor ⁷	Cord & Plug	Luminaire Length	
A1-ZADY-STN													
ZADY Standard (A1-ZADY-STN)	50% Semi-Frosted Lens (SF)	Natural Silver (NA) ¹	2400K (24K) 2700K (27K)	1.5 Watts (1.5W) 144 Lumens / ft* ²	0-10V (10V)	End Feed (EF)	Indoor (DRY)	120V - 277V Line Voltage* ⁶ (UNV)	Rocker Switch Left (RWL)	Sensor Left (OCSL)	Cord & Plug Left* ⁸ (CPL)	Specify Length in Feet & Inches	
		Satin (SA)	3000K (30K)	2 Watts (2W) 192 Lumens / ft* ²	0-10V: 100% - 1% (10V-1%)	Bottom Feed (BF)	Outdoor (DAMP)		Rocker Switch Center (RWC)	Sensor Center (OCSC)			
		100% Frosted Lens (F)	Silver (SR)	3500K (35K) 4000K (40K)	3 Watts (3W) 288 Lumens / ft* ²	0-10V: 100% - 1% (10V-1%)	Side Feed (SF)		120V Line Voltage (Phase Dimming Only) (120V)	Rocker Switch Right (RWR)	Sensor Right (OCSR)	Cord & Plug Right* ⁸ (CPR)	
			White (WH)	4500K (45K) 5000K (50K) 5700K (57K)	4 Watts (4W) 384 Lumens / ft* ²	Forward Phase: 120V Line Voltage (FP)	No Feed* ⁵ (NF)			Leave Blank for None	Leave Blank for None	Leave Blank for Hardwiring	
			Black (BK)	Red (R) Green (G)	5 Watts (5W) 480 Lumens / ft* ²	DMX-512* ³ (DMX) DALI* ⁴ (DALI)							
		Anti-Microbial Black (ABK)	Blue (B) Amber (A)	6 Watts (6W) 576 Lumens / ft* ²	JAB 0-10V (JAB-10V)								
				8 Watts (8W) 768 Lumens / ft* ²	Leave Blank for Non-Dimming								
				12 Watts (12W) 1152 Lumens / ft* ²									

Note: See page 2 for ordering notes & restrictions.

ORDERING NOTES & RESTRICTIONS

- Note:** Maximum run for Line Voltage Integral Drivers is 320 Watts.
Example: 320 Watts ÷ 8 Watts per Foot = 40' Maximum Run.
- *1 Default finish is Natural Silver (NA) if left blank.
 - *2 Lumens per Foot based on 35K CCT LED with Semi-Frosted Lens (SF).
Example: 96 Lumens x 1.5 Watts = 144 Lumens per Foot.
 - *3 Default DMX address of each fixture is 001. Consult third party DMX commissioner to modify at time of installation.
 - *4 DALI commissioning to be performed by a third party at time of installation. ALUZ does not provide DALI commissioning.
 - *5 No Feed: Power is fed through the back or bottom of luminaire by drilling proper sized hole for conduit.
 - *6 Integral Drivers are sized based on wattage per length.
Example: 10' x 3 Watts per Foot = 30 Watts. Driver will be sized based on 30 Watts.
 - *7 Rocker Switch and Occupancy Sensor must be in different locations.
Example: Switch and Sensor cannot both be center.
 - *8 Only available in Forward Phase and Non-Dimming

LAMP SPECIFICATIONS

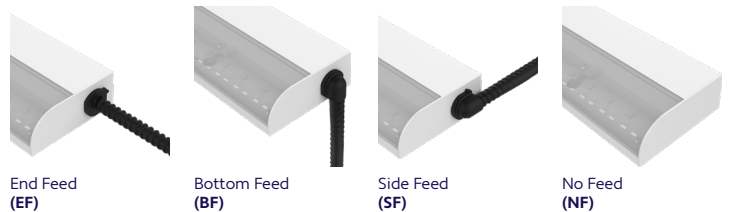
Lamp Number	Correlated Color Temperature / Description	Efficacy (Lumens per Watt)	L70 LED Life
24K	2400 Kelvin (Incandescent White)	120	60,000 hrs.
27K	2700 Kelvin (Warm White)	120	
30K	3000 Kelvin (Warm White)	120	
35K	3500 Kelvin (Neutral White)	120	
40K	4000 Kelvin (Neutral White)	120	
45K	4500 Kelvin (Neutral White)	120	40,000 hrs.
50K	5000 Kelvin (Cool White)	130	
57K	5700 Kelvin (Cool White)	130	
R	Red (621nm)	70	40,000 hrs.
G	Green (525nm)	139	
B	Blue (470nm)	40	
A	Amber (590nm)	128	

Note: The specifications Standard Output (SO), Mid Output (MO), and High Output (HO) have been replaced by a single output equivalent to High Output (HO).
 To calculate Lumens per Foot, multiply Efficacy by Watts per Foot.
Example: 120 Lumens per Watt x 1.5 Watts per Foot = 180 Lumens per Foot.

LAMP FEATURES

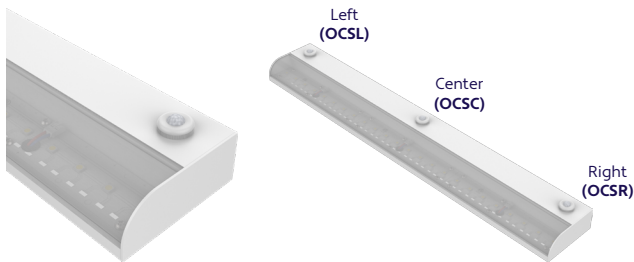
Lamp Type	High Output LEDs (No Mercury)
CRI	> 95
Efficacy (Based on 35K CCT LED with Semi-Frosted Lens)	96 Lumens per Watt

FEED POINTS

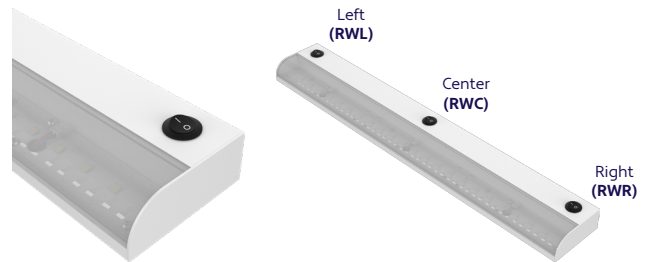


Add the following measurement to the overall length of luminaire:
EF: 0.15", **BF:** 0.55", **SF:** 0.55"

ADD-ONS (Specified in Product Code)

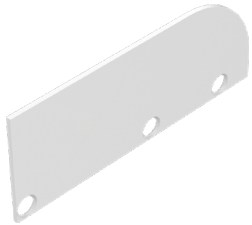


Occupancy Sensor (OCSX) X = Specify Location: Left, Center, or Right



Rocker Switch (RWX) X = Specify Location: Left, Center, or Right

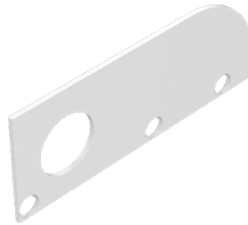
END CAPS (Sold Separately)



End Cap
(A1-ZADY-STN-EC)

Part #	Qty.
A1-ZADY-STN-EC	

Note: Use 1 End Cap for each terminus. Suitable for both left and right side.



End Cap with Hole
(A1-ZADY-STN-EC-H)

Part #	Qty.
A1-ZADY-STN-EC-H	

Note: Use 1 End Cap with Hole for each terminus where conduit (by others) will be brought into the luminaire. Hole measures \varnothing 3/4". Suitable for both left and right side.

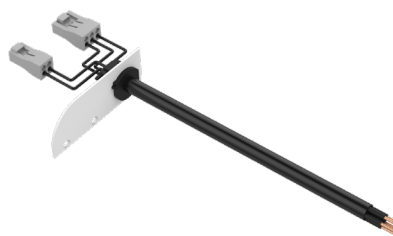
CONNECTORS (Sold Separately)



Dry Power Connector with Left End Cap
(A1-ZADY-STN-PC-ECL-DRY-X)
X = Specify Cable Length, 6' Default

Part #	Length	Qty.
A1-ZADY-STN-PC-ECL-DRY-6'		
A1-ZADY-STN-PC-ECL-DRY-		

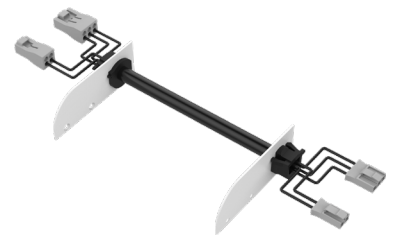
Note: Use 1 Dry Power Connector with Left End Cap for each dry location power lead on the left side.



Dry Power Connector with Right End Cap
(A1-ZADY-STN-PC-ECR-DRY-X)
X = Specify Cable Length, 6' Default

Part #	Length	Qty.
A1-ZADY-STN-PC-ECR-DRY-6'		
A1-ZADY-STN-PC-ECR-DRY-		

Note: Use 1 Dry Power Connector with Left End Cap for each dry location power lead on the left side. Standard Power Connector.



Dry Jumper Cable with End Caps
(A1-ZADY-STN-JC-EC-DRY-X)
X = Specify Cable Length, 3' Default

Part #	Length	Qty.
A1-ZADY-STN-JC-EC-DRY-3'		
A1-ZADY-STN-JC-EC-DRY-		

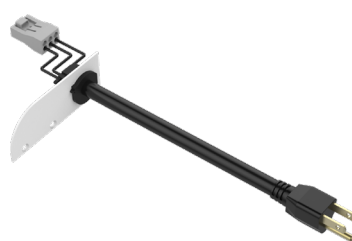
Note: Use 1 Dry Jumper Cable with End Caps for each instance where the run will transverse a corner or obstacle.



Dry Cord & Plug with Left End Cap
(A1-ZADY-STN-CPL-DRY-X)
X = Specify Cable Length, 6' Default

Part #	Length	Qty.
A1-ZADY-STN-CPL-DRY-6'		
A1-ZADY-STN-CPL-DRY-		

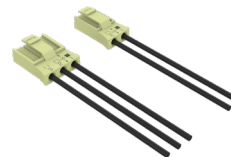
Note: Only compatible with Forward Phase (FP) and Non-Dimming luminaires. 6' Minimum Length, 9' Maximum.



Dry Cord & Plug with Right End Cap
(A1-ZADY-STN-CPR-DRY-X)
X = Specify Cable Length, 6' Default

Part #	Length	Qty.
A1-ZADY-STN-CPR-DRY-6'		
A1-ZADY-STN-CPR-DRY-		

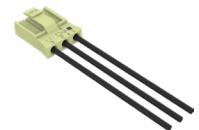
Note: Only compatible with Forward Phase (FP) and Non-Dimming luminaires. 6' Minimum Length, 9' Max.



Hardwire Disconnects
(A1-PC-5P-HWD)

Part #	Qty.
A1-PC-5P-HWD	

Note: Use Hardwire Disconnects for conduit power feed applications. Typically used with No Feed (NF) product code selection.



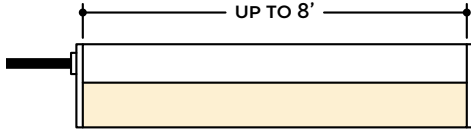
120V Hardwire Disconnects
(A1-PC-3P-HWD-120V)

Part #	Qty.
A1-PC-3P-HWD-120V	

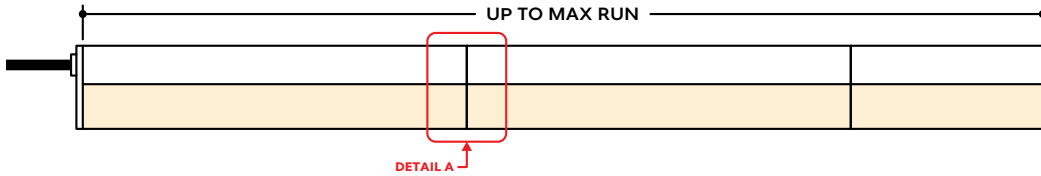
Note: Use 120V Hardwire Disconnects for 120V conduit power feed applications. Typically used with No Feed (NF) product code selection. Only compatible with Forward Phase (FP) and Non-Dimming luminaires.

DESIGN GUIDELINES

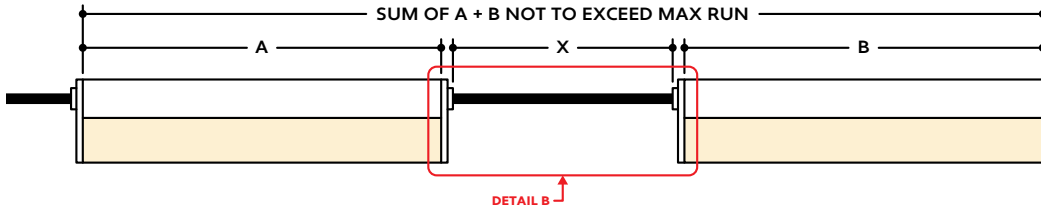
Individual Fixture



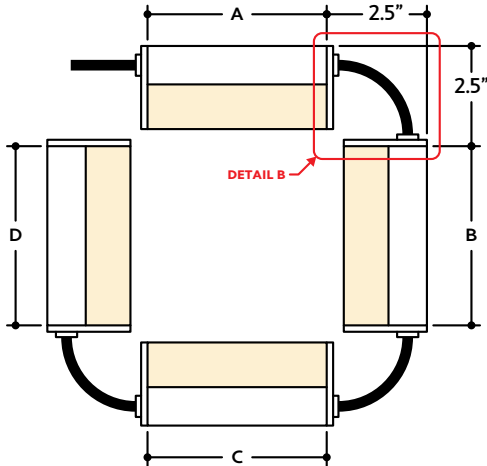
Continuous Run



Run with Jumper Cable



Run with Square Layout



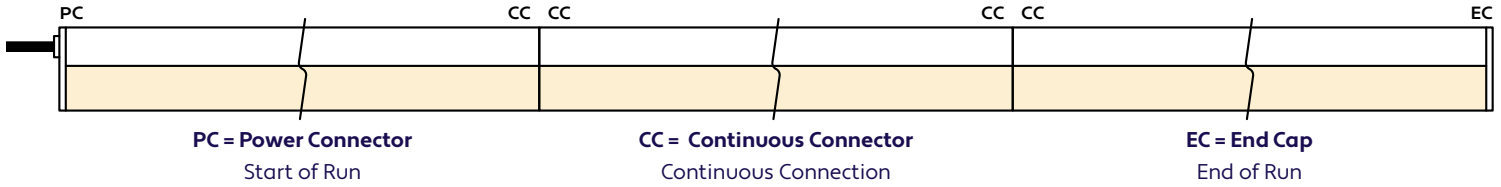
KEY

- Detail A** **Continuous Connection (Dry Location):** Luminaire segments connect using internal continuous connectors, leaving no gaps between segments. Refer to installation instructions for additional information.
- Detail B** **Jumper Cable:** Used to span a corner or traverse a gap or obstacle in the installation area.

Note: Drawings not to scale. Product may differ from examples shown.

CONNECTION SEQUENCE

Dry Location

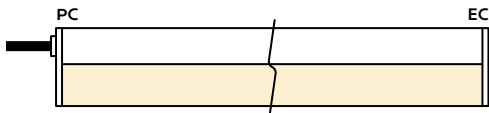


- Specifying a layout is not required to place an order.
- Configuration code applies to full length ordered and will be built per the Continuous Run models on Design Guidelines.
- Connector type subject to change based on availability and listing. Refer to Design Guidelines for details.

HOW TO SPECIFY CONFIGURATIONS

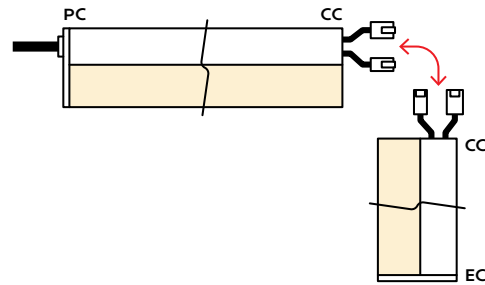
Example: 20' Straight Run

- 1x A1-ZADY-STN-SF-NA-35K-4W-10V-HO-EF-DRY-UNV-20'-PC-EC



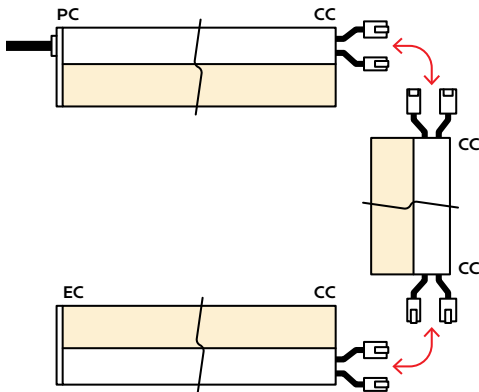
Example: 25' L-Shaped Run

- 1x A1-ZADY-STN-SF-NA-35K-4W-10V-HO-EF-DRY-UNV-12'-PC-CC
- 1x A1-ZADY-STN-SF-NA-35K-4W-10V-HO-EF-DRY-UNV-13'-CC-EC



Example: 30' U-Shaped Run

- 1x A1-ZADY-STN-SF-NA-35K-4W-10V-HO-EF-DRY-UNV-6'-PC-CC
- 1x A1-ZADY-STN-SF-NA-35K-4W-10V-HO-EF-DRY-UNV-18'-CC-CC
- 1x A1-ZADY-STN-SF-NA-35K-4W-10V-HO-EF-DRY-UNV-6'-CC-EC



Example: 28' Rectangle Shaped Run

- 1x A1-ZADY-STN-SF-NA-35K-4W-10V-HO-EF-DRY-UNV-11'-PC-CC
- 1x A1-ZADY-STN-SF-NA-35K-4W-10V-HO-EF-DRY-UNV-3'-CC-CC
- 1x A1-ZADY-STN-SF-NA-35K-4W-10V-HO-EF-DRY-UNV-11'-CC-CC
- 1x A1-ZADY-STN-SF-NA-35K-4W-10V-HO-EF-DRY-UNV-3'-CC-EC

