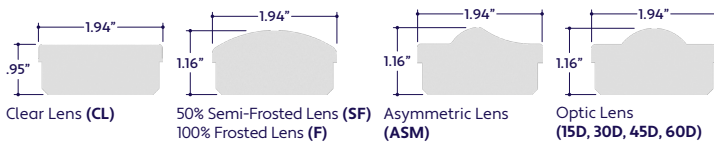
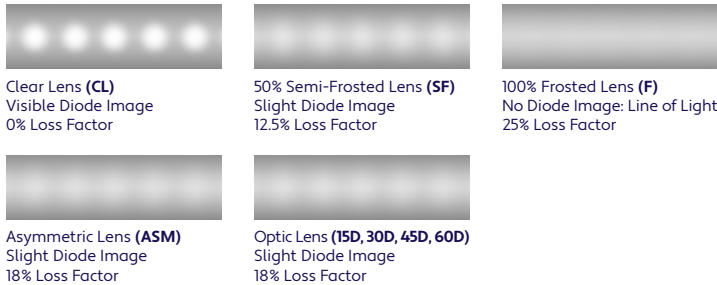


### END VIEWS / DIMENSIONS



### LENS / OPTICS APPEARANCE



### GENERAL FEATURES

<b>Applications</b>	Accent, Cove, Under Cabinet Lighting
<b>Lens</b>	Clear, 50% Semi-Frosted, or 100% Frosted
<b>Optics &amp; Asymmetric</b>	15°, 30°, 45°, 60°, 120°, or Asymmetric Optics
<b>Length</b>	Built to Order (+/- 1.8" Tolerance) See <b>Length Restrictions</b> Table for details
<b>Construction</b>	Aluminum Extrusion
<b>Weight</b>	0.61 lbs per foot
<b>Mounting</b>	Mounting Clips (Sold Separately)
<b>Listing</b>	Dry or Damp Location UL1598, CSA C22.2#250.0 UL8750, CSA250 UL2108, 67.1.9, 60.4, CSA C22.2 #9
<b>Driver</b>	Remote
<b>Temperature Ratings</b>	Operating / Startup: -20° to 48°C (-4° to 120°F) Storage: -40° to 76°C (-40° to 170°F)
<b>Installation Link</b>	

### ELECTRICAL

<b>Dimming</b>	0-10V, DMX, DALI
<b>Luminaire Voltage</b>	120V - 277V (UNV)

### SPECIFY PRODUCT CODE | CHOOSE FROM DROP DOWNS

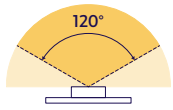
Series	Lens / Optics	Finish	BIOS LED	Watts per Foot	Dimming	Listing	Luminaire Voltage <sup>6</sup>	Luminaire Length
<b>A1-ZUCO-STW-BIOS</b>								<b>UNV</b>
ZUCO Standard Wide BIOS Illuminated (A1-ZUCO-STW-BIOS)	Clear Lens (CL)	Natural Silver (NA) <sup>1</sup>	BIOS Biological Static: 3500K Daytime <sup>2</sup>	1.5 Watts (1.5W) 232 Lumens / ft <sup>3</sup>	0-10V (10V)	Indoor (DRY)	120 - 277V Line Voltage (UNV)	Specify Length in Feet & Inches Example: 7'8"
	50% Semi-Frosted Lens (SF)	Silver (SR)	(B5-35K)	2 Watts (2W) 310 Lumens / ft <sup>3</sup>				
	100% Frosted Lens (F)	White (WH)	BIOS Biological Dynamic: 3500K Daytime - 3000K Evening <sup>3</sup>	3 Watts (3W) 465 Lumens / ft <sup>3</sup>	DALI (DALI)	Outdoor (DAMP)		
	Asymmetric Lens (ASM)	Satin (SA)	(BD-35K-30K)	4 Watts (4W) 620 Lumens / ft <sup>3</sup>	DMX-512 (DMX)			
	15° Optics (15D)	Black (BK)	BIOS Biological Tunable: 3500K Daytime - 2700K Evening <sup>4</sup>	5 Watts (5W) 775 Lumens / ft <sup>3</sup>				
	30° Optics (30D)		(BT-35K-27K)	6 Watts (6W) 930 Lumens / ft <sup>3</sup>				
	45° Optics (45D)			8 Watts (8W) 1240 Lumens / ft <sup>3</sup>				
	60° Optics (60D)			10 Watts (10W) 1550 Lumens / ft <sup>3</sup>				
				12 Watts (12W) 1860 Lumens / ft <sup>3</sup>				

Note: See page 2 for ordering notes & restrictions.

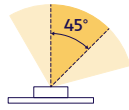
### ORDERING NOTES & RESTRICTIONS

- \*1 Default finish is Natural Silver (NA) if left blank.
- \*2 BIOS Biological Static available in standard 3500K Daytime CCT. Consult factory for other color temperature options.
- \*3 BIOS Biological Dynamic available in standard 3500K Daytime - 3000K Evening CCT gamut. Consult factory for other color temperature options.
- \*4 BIOS Biological Tunable available in standard 3500K Daytime - 2700K Evening CCT gamut. Consult factory for other color temperature options.
- \*5 Lumens per Foot based on 35K CCT LED. **Example:** 155 Lumens x 10 Watts = 1550 Lumens per Foot.
- \*6 Remote drivers wattage sized based on length of run. **Example:** 6' run x 10 watts per foot = 60 watts. Driver will be sized to 60 watts maximum.

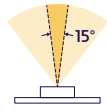
### BEAM ANGLES



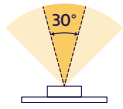
120° x 120° Beam  
Clear Lens (CL)  
50% Semi-Frosted Lens (SF)  
100% Frosted Lens (F)



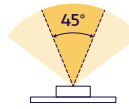
45° x 60° Beam  
Asymmetric Lens  
(ASM)



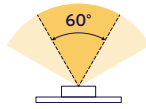
15° x 60° Beam  
Optic Lens  
(15D)



30° x 60° Beam  
Optic Lens  
(30D)



45° x 60° Beam  
Optic Lens  
(45D)



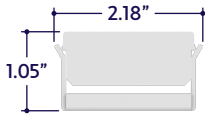
60° x 60° Beam  
Optic Lens  
(60D)

### MINIMUM & MAXIMUM RUNS

Wattage	1.5W	2W	3W	4W	5W	6W	8W	10W	12W
<b>0-10V &amp; DALI Minimum Run</b>	4'	3'	2'	2'	2'	1'	1'	1'	1'
<b>0-10V &amp; DALI Maximum Run</b>	39'	27'	19'	14'	11'	9'	7'	6'	5'
<b>DMX Minimum Run</b>	4'	3'	2'	2'	2'	1'	1'	1'	1'
<b>DMX Maximum Run</b>	26'	18'	13'	9'	8'	6'	4'	4'	3'

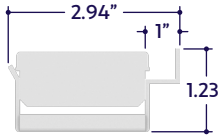
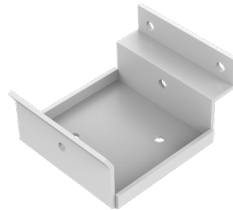
### MOUNTING OPTIONS (Sold Separately)

**Note:** Mounting clips are only available in Natural Silver Finish, unless otherwise specified.



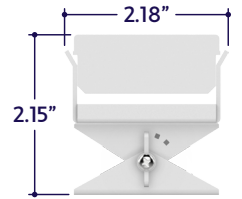
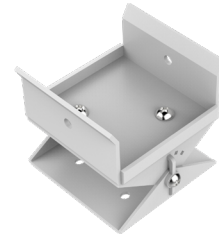
Part #	Qty.
A1-ZUCO-STW-MC-1	

**Note:** Use 1 mounting clip per 2', rounded up.  
Click on image to see cut sheet for additional details.



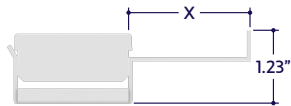
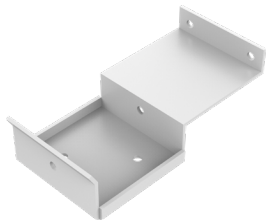
Part #	Qty.
A1-ZUCO-STW-MC-2	

**Note:** Use 1 mounting clip per 2', rounded up.  
Click on image to see cut sheet for additional details.



Part #	Qty.
A1-ZUCO-STW-MC-3	

**Note:** Use 1 mounting clip per 2', rounded up.  
Click on image to see cut sheet for additional details.

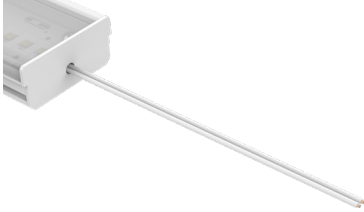


Part #	Length	Qty.
A1-ZUCO-STW-MC-4-		

**Note:** Use 1 mounting clip per 2', rounded up.  
Click on image to see cut sheet for additional details.

### DRY CONNECTORS (Sold Separately)

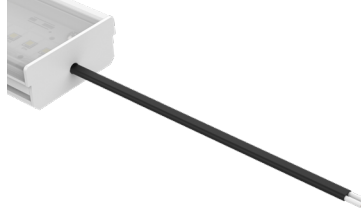
**Note:** Connectors are factory assembled to each run length.



Dry Power Connector  
(A1-ZUCO-STW-BIOS-PC-DRY-X)  
X = Specify Length, 36" Default, 25' Maximum

Part #	Length	Qty.
A1-ZUCO-STW-BIOS-PC-DRY-	36"	
A1-ZUCO-STW-BIOS-PC-DRY-		

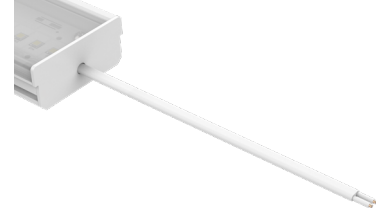
**Note:** Specify 1 Power Connector for each lead required. Power Connectors are factory assembled to each length.



Dry Power Connector with Black Jacket  
(A1-ZUCO-STW-BIOS-PC-DRY-BK-X)  
X = Specify Length, 36" Default, 25' Maximum

Part #	Length	Qty.
A1-ZUCO-STW-BIOS-PC-DRY-BK-	36"	
A1-ZUCO-STW-BIOS-PC-DRY-BK-		

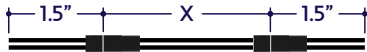
**Note:** Specify 1 Power Connector for each lead required. Power Connectors are factory assembled to each length.



Dry Power Connector with White Jacket  
(A1-ZUCO-STW-BIOS-PC-DRY-WH-X)  
X = Specify Length, 36" Default, 25' Maximum

Part #	Length	Qty.
A1-ZUCO-STW-BIOS-PC-DRY-WH-	36"	
A1-ZUCO-STW-BIOS-PC-DRY-WH-		

**Note:** Specify 1 Power Connector for each lead required. Power Connectors are factory assembled to each length.



Dry Continuous Connector  
(A1-ZUCO-STW-BIOS-CC-DRY-X)  
X = Specify Length, 3" Default

Part #	Length	Qty.
A1-ZUCO-STW-BIOS-CC-DRY-	3"	
A1-ZUCO-STW-BIOS-CC-DRY-		

**Note:** Specify Continuous Connectors to traverse a gap or obstacle. Continuous Connectors are factory assembled to specified lengths.



Dry Continuous Connector with Black Jacket  
(A1-ZUCO-STW-BIOS-CC-DRY-BK-X)  
X = Specify Length, 3" Default

Part #	Length	Qty.
A1-ZUCO-STW-BIOS-CC-DRY-BK-	3"	
A1-ZUCO-STW-BIOS-CC-DRY-BK-		

**Note:** Specify Continuous Connectors to traverse a gap or obstacle. Continuous Connectors are factory assembled to specified lengths.



Dry Continuous Connector with White Jacket  
(A1-ZUCO-STW-BIOS-CC-DRY-WH-X)  
X = Specify Length, 3" Default

Part #	Length	Qty.
A1-ZUCO-STW-BIOS-CC-DRY-WH-	3"	
A1-ZUCO-STW-BIOS-CC-DRY-WH-		

**Note:** Specify Continuous Connectors to traverse a gap or obstacle. Continuous Connectors are factory assembled to specified lengths.

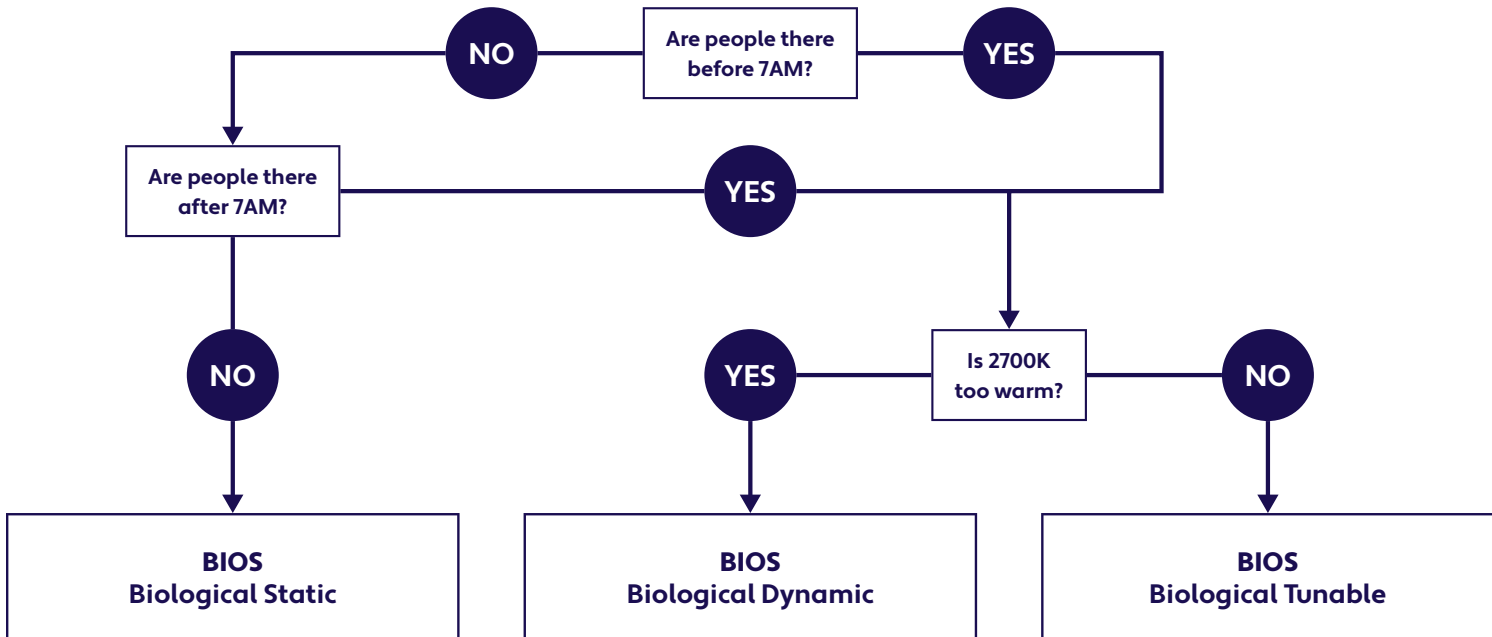
### DELIVERED MELANOPIC RATIOS

BIOS Solution / Nominal CCT / Product Code	Spectral Mode	CRI	R9	Daytime Spectrum Melanopic Ratio* (M/P)	
				m-EER	m-DER
BIOS Biological Static: 3500K Daytime (BIOS-BS-35K)	Daytime Solution	80+	> 90	≥ 0.80	≥ 0.72
BIOS Biological Dynamic: 3500K Daytime - 3000K Evening (BIOS-BD-35K-30K)	Daytime + Evening Solution	80+	> 90	≥ 0.70	≥ 0.63
BIOS Biological Tunable: 3500K Daytime - 2700K Evening (BIOS-BT-35K-27K)	Daytime + Evening Solution	80+	> 90	≥ 0.80	≥ 0.72

\*Melanopic ratios are provided in two forms: (m-EER) which is calculated using the WELL v2 methodology and the corresponding CIE melanopic Daylight Equivalent Ratio, (m-DER).

### CHOOSING YOUR BIOS SOLUTION

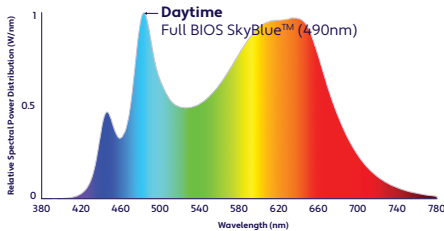
ALUZ offers four different BIOS Circadian LED Solutions – Biological Static, Biological Dynamic, and Biological Tunable White. Use the decision tree below to identify when and where to use BIOS Wellness LED Lighting Solutions .



No CCT Change when Dimmed

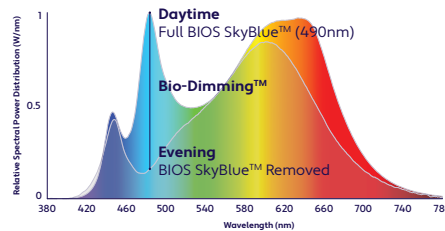
500K Shift when Dimmed<sup>B</sup>

Dims to 2700K



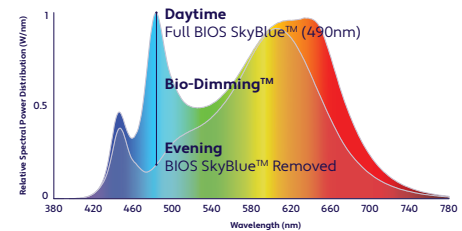
**Daytime Solution**  
(Offices, Medical / Dental Offices)

Spaces in operation during daytime hours, between 7AM and 7PM.



**Daytime + Evening Solution**  
(Hospitals)

Spaces in operation overnight, after 7PM and before 7AM. CCT color shift in the evening not preferred.  
(<sup>B</sup>3000K dims to 2700K)

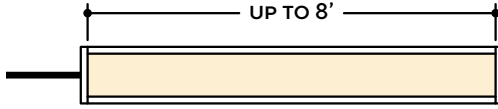


**Daytime + Evening Solution**  
(Offices, Shiftwork)

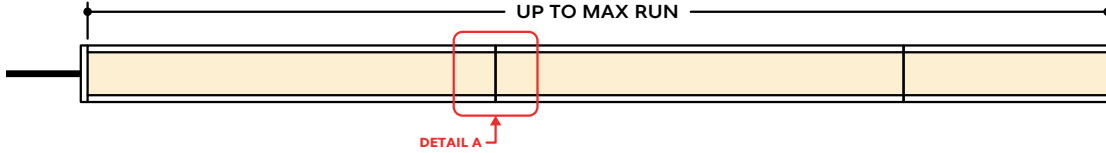
Spaces in operation overnight, after 7PM and before 7AM and people do not sleep there. CCT color shift in the evening not preferred.

## DESIGN GUIDELINES

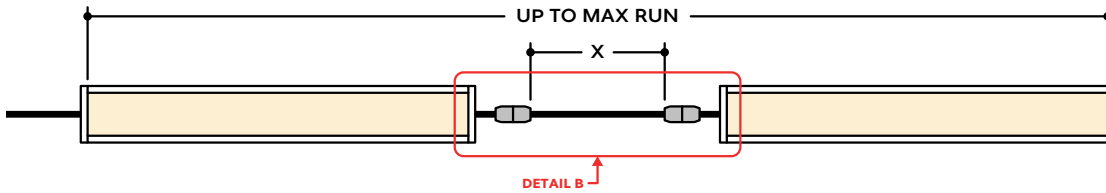
### Individual Fixture



### Continuous Run (Dry Location)



### Runs with Continuous Connector (Dry Location)

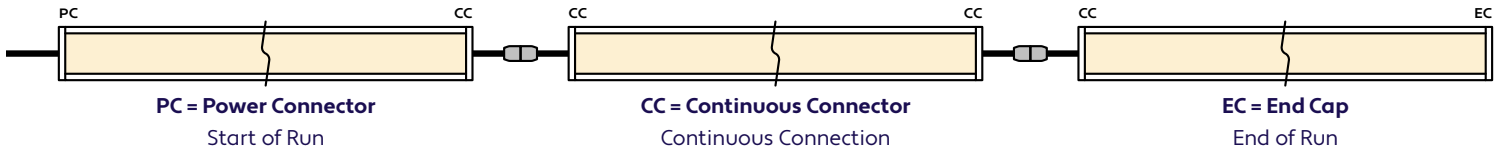


## KEY

- Detail A** **Continuous Connection (Dry Location):** Luminaire segments connect using pins, leaving no gaps between segments, with a mounting clip holding the two segments together. Refer to installation instructions for additional information.
- Detail B** **Dry Continuous Connector:** Used to span a corner or traverse a gap, corner, or obstacle in a dry location installation area.

**Note:** Drawings not to scale. Product may differ from examples shown.

## CONNECTION SEQUENCE

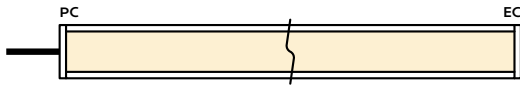


- Specifying a layout is not required to place an order.
- Configuration code applies to full length ordered and will be built per the Continuous Run models on Design Guidelines.
- Connector type subject to change based on availability and listing. Refer to Design Guidelines for details.

## HOW TO SPECIFY CONFIGURATIONS

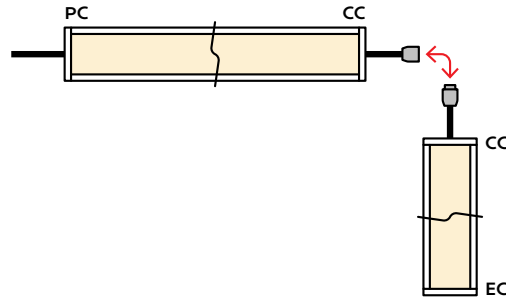
### Example: 20' Straight Run

- 1x A1-ZUCO-STW-BIOS-CL-NA-BS-35K-10W-10V-DRY-UNV-9'-PC-EC



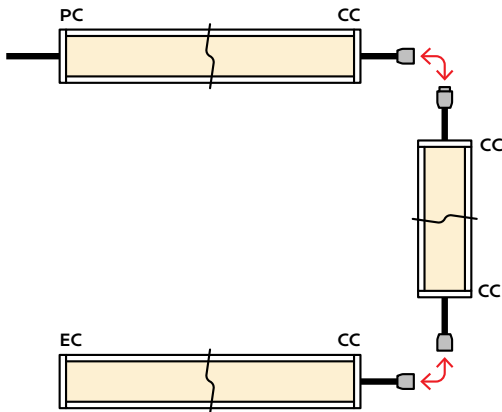
### Example: 25' L-Shaped Run

- 1x A1-ZUCO-STW-BIOS-CL-NA-BS-35K-10W-10V-DRY-UNV-6'-PC-CC
- 1x A1-ZUCO-STW-BIOS-CL-NA-BS-35K-10W-10V-DRY-UNV-7'-CC-EC



### Example: 30' U-Shaped Run

- 1x A1-ZUCO-STW-BIOS-CL-NA-BS-35K-10W-10V-DRY-UNV-6'-PC-CC
- 1x A1-ZUCO-STW-BIOS-CL-NA-BS-35K-10W-10V-DRY-UNV-9'-CC-CC
- 1x A1-ZUCO-STW-BIOS-CL-NA-BS-35K-10W-10V-DRY-UNV-6'-CC-EC



### Example: 28' Rectangle Shaped Run

- 1x A1-ZUCO-STW-BIOS-CL-NA-BS-35K-10W-10V-DRY-UNV-5'-PC-CC
- 1x A1-ZUCO-STW-BIOS-CL-NA-BS-35K-10W-10V-DRY-UNV-3'-CC-CC
- 1x A1-ZUCO-STW-BIOS-CL-NA-BS-35K-10W-10V-DRY-UNV-5'-CC-CC
- 1x A1-ZUCO-STW-BIOS-CL-NA-BS-35K-10W-10V-DRY-UNV-3'-CC-EC

