

ALUZ

Architectural Lighting

A2 Series | Recessed

ZELO Family

ZELO Arc • ZELO Half Arc • ZELO Duet

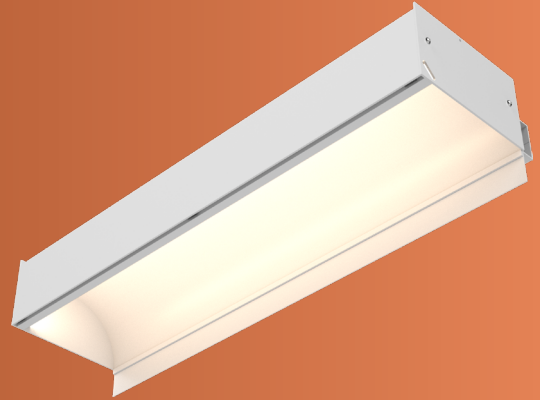
Discover the ZELO family.

ZELO is a recessed luminaire family designed for indirect perimeter lighting that refines cove design with an ambient glow and wider light distribution.

ZELO can be customized to provide aesthetic accent lighting or total illumination of a space.

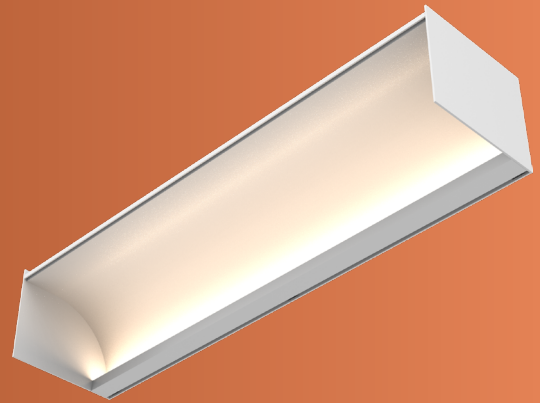
Introducing the ZELO Arc

ZELO Arc is a recessed, linear luminaire with an arc-shaped profile ideal for continuous perimeter applications.



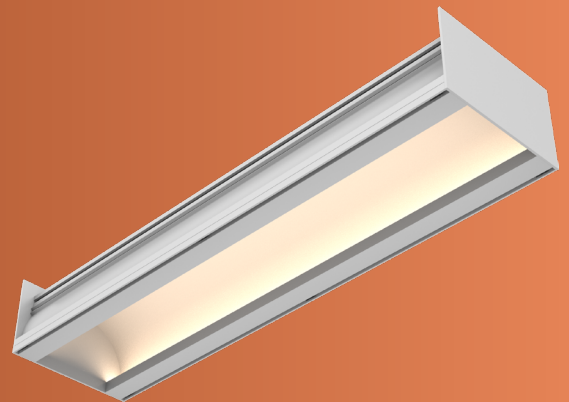
Meet the ZELO Half Arc

ZELO Half Arc is a recessed, linear luminaire with a half-arc profile ideal for continuous perimeter applications.



Say hello to the ZELO Duet

ZELO Duet is a recessed, indirect luminaire with a dual light source ideal for primary lighting applications.



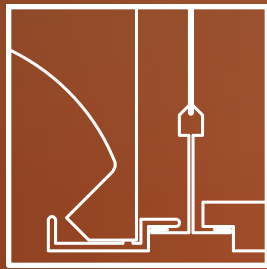


Factory-built, illuminated corners with customizable angles bring the designer's vision to life.

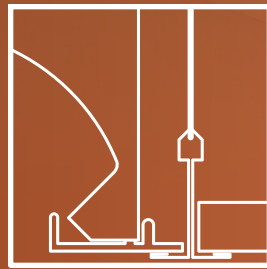
Built to the inch, and available with a range of color temperatures, lumen packages, and dimming options, ZELO can be manufactured to your exact specifications.

Trim Options for Every Scenario.

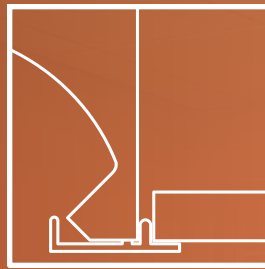
Achieve flawless integration with hard, plaster, and T-Bar grid ceilings with diverse ceiling trim options.



Flange



T-Bar



Hard



Plaster

Stunning Dynamic White capabilities allow a wide range of color temperatures certain to illuminate an environment with the ideal color temperature.

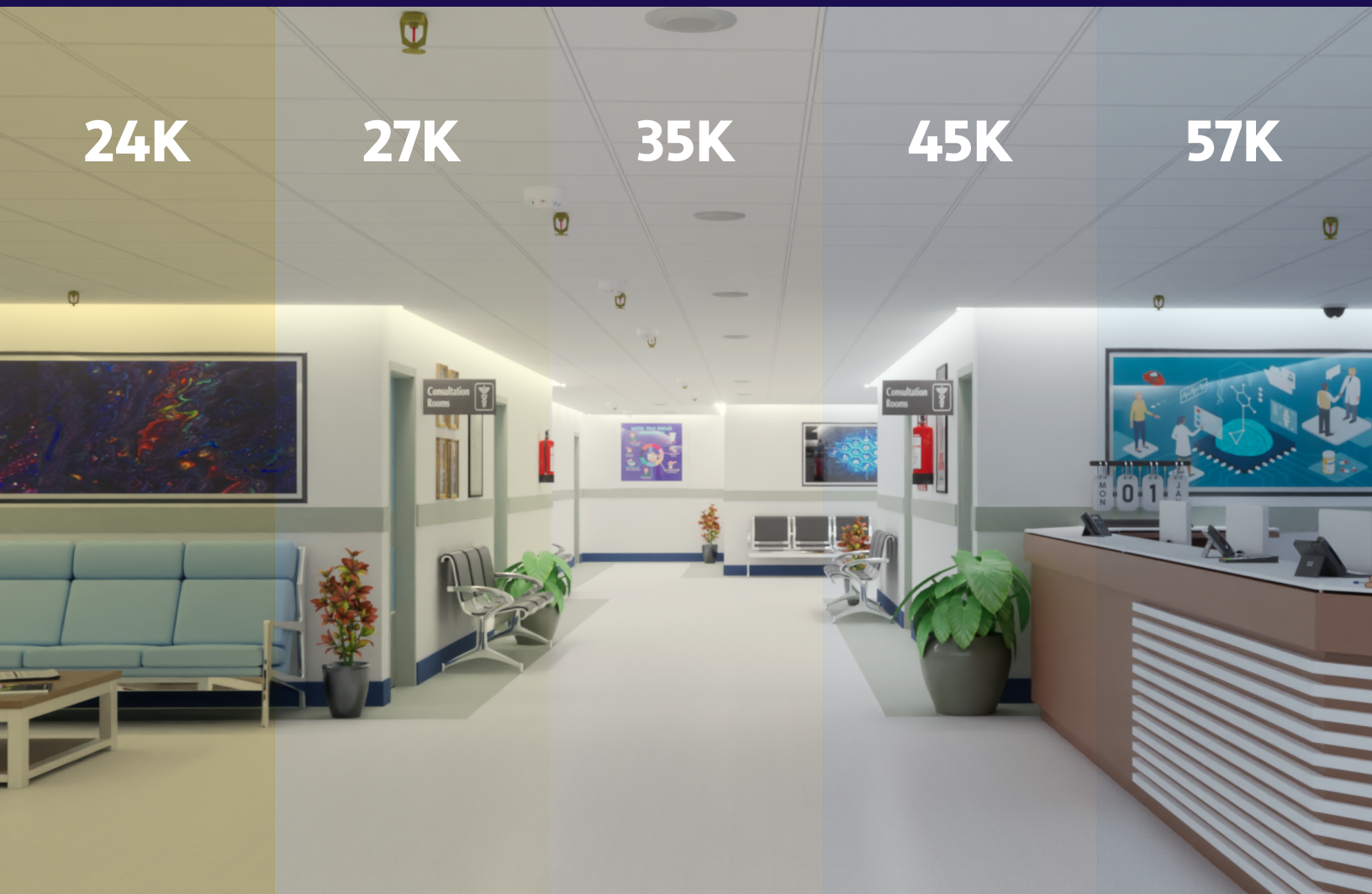
24K

27K

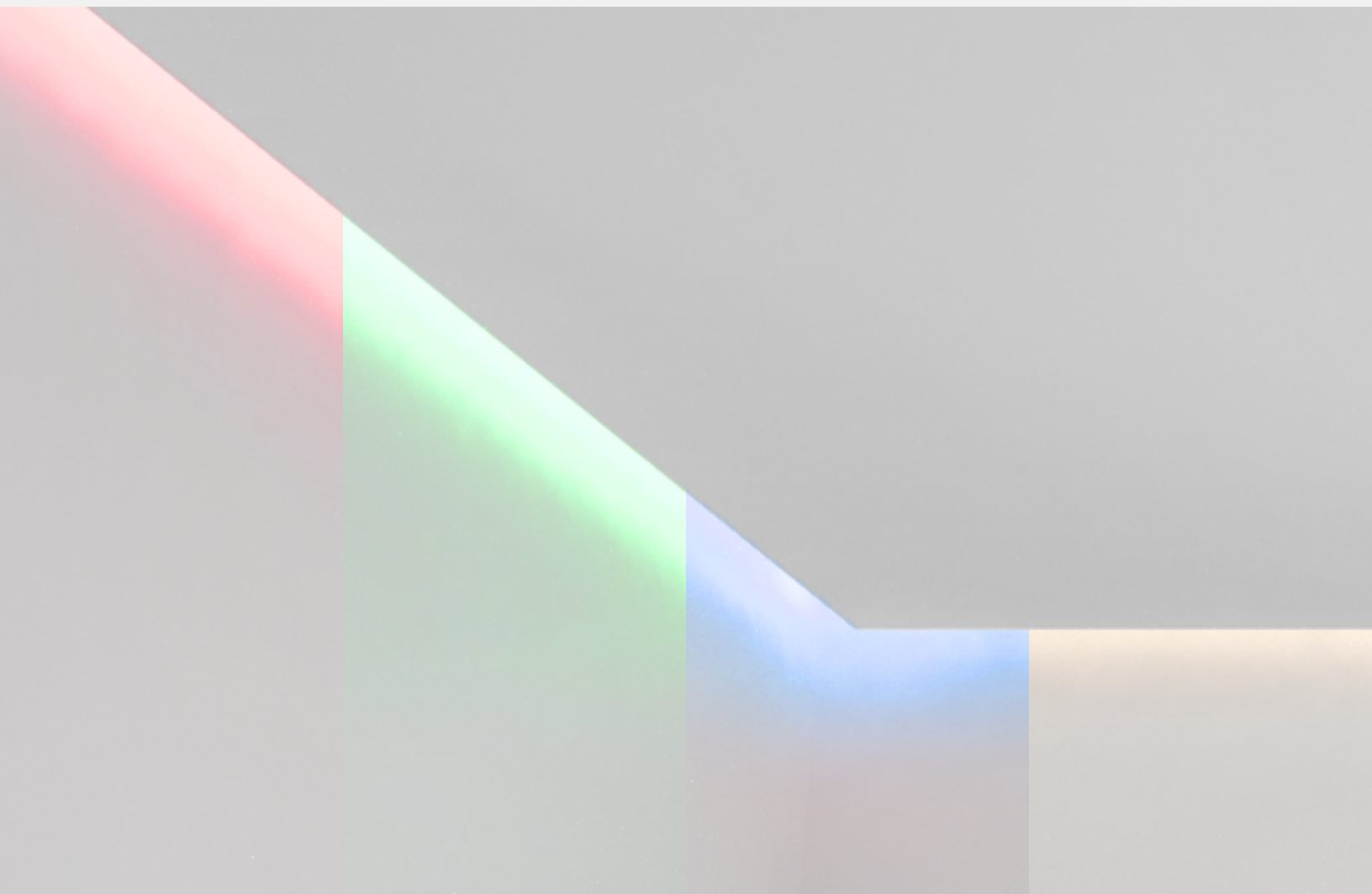
35K

45K

57K



Seamlessly alternate between vibrant decorative lighting and sophisticated functional lighting with dynamic RGBW lighting.



ALUZ

Architectural Lighting