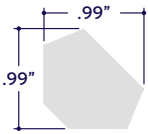


### END VIEW / DIMENSIONS



### MINIMUM & MAXIMUM RUNS

Wattage	1.5W	2W	3W	4W	5W	6W	8W	10W	12W
<b>0-10V &amp; DALI Minimum Run</b>	4'	3'	2'	2'	2'	1'	1'	1'	1'
<b>0-10V &amp; DALI Maximum Run</b>	39'	27'	19'	14'	11'	9'	7'	6'	5'
<b>DMX Minimum Run</b>	4'	3'	2'	2'	2'	1'	1'	1'	1'
<b>DMX Maximum Run</b>	26'	18'	13'	9'	8'	6'	4'	4'	3'

### SPECIFY PRODUCT CODE | CHOOSE FROM DROP DOWNS

Series	Lens / Optics	Finish	BIOS LED	Watts per Foot	Dimming	Listing	Luminaire Voltage <sup>27</sup>	Luminaire Length
							<b>UNV</b>	
ZUCO Corner BIOS Illuminated (A1-ZUCO-CRN-BIOS)	Clear Lens (CL)	Natural Silver <sup>*2</sup> (NA)	BIOS Biological Static: 3500K Daytime <sup>*3</sup> (BS-35K)	1.5 Watts (1.5W) 234 Lumens / ft <sup>*6</sup>	0-10V (10V)	Indoor (DRY)	120-277V Line Voltage (UNV)	Specify Length in Feet & Inches Example: 7'8"
	50% Semi-Frosted Lens (SF)			2 Watts (2W) 312 Lumens / ft <sup>*6</sup>				
	100% Frosted Lens (F)	Silver (SR)		3 Watts (3W) 468 Lumens / ft <sup>*6</sup>	DALI (DALI)	Outdoor (DAMP)		
	Asymmetric Lens Left (ASML)	White (WH)	BIOS Biological Dynamic: 3500K Daytime - 3000K Evening <sup>*4</sup> (BD-35K-30K)	4 Watts (4W) 624 Lumens / ft <sup>*6</sup>				
	Asymmetric Lens Right <sup>*1</sup> (ASMR)	Satin (SA)		5 Watts (5W) 780 Lumens / ft <sup>*6</sup>	DMX-512 (DMX)			
		Black (BK)		6 Watts (6W) 936 Lumens / ft <sup>*6</sup>				
				8 Watts (8W) 1248 Lumens / ft <sup>*6</sup>				
		15° Optics (15D)		10 Watts (10W) 1560 Lumens / ft <sup>*6</sup>				
		30° Optics (30D)		12 Watts (12W) 1872 Lumens / ft <sup>*6</sup>				
		45° Optics (45D)						
	60° Optics (60D)							

\*1 Default Asymmetric Direction is Right (ASMR) if unspecified.

\*2 Default finish is Natural Silver (NA) if left blank.

\*3 BIOS Biological Static available in standard 3500K Daytime CCT. Consult factory for other color temperature options.

\*4 BIOS Biological Dynamic available in standard 3500K Daytime - 3000K Evening CCT gamut. Consult factory for other color temperature options.

\*5 BIOS Biological Tunable available in standard 3500K Daytime - 2700K Evening CCT gamut. Consult factory for other color temperature options.

\*6 Lumens per Foot based on 35K CCT LED. Example: 156 Lumens x 4 Watts = Initial 624 Lumens per Foot.

\*7 Remote drivers wattage sized based on length of run. Example: 6' run x 10 watts per foot = 60 watts. Driver will be sized to 60 watts maximum.

### GENERAL FEATURES

<b>Applications</b>	Accent, Cove, Under Cabinet Lighting
<b>Lens</b>	Clear, 50% Semi-Frosted, or 100% Frosted
<b>Optics &amp; Asymmetric</b>	15°, 30°, 45°, 60°, 120°, or Asymmetric Optics
<b>Length</b>	Built to Order (+/- 1.8" Tolerance) See <b>Length Restrictions</b> Table for details
<b>Construction</b>	Aluminum Extrusion
<b>Weight</b>	0.44 lbs per foot
<b>Mounting</b>	Mounting Clips (Sold Separately)
<b>Listing</b>	Dry or Damp Location UL1598, CSA C22.2#250.0 UL8750, CSA250 UL2108, 67.1.9, 60.4, CSA C22.2 #9
<b>Driver</b>	Remote
<b>Temperature Ratings</b>	Operating / Startup: -20° to 48°C (-4° to 120°F) Storage: -40° to 76°C (-40° to 170°F)
<b>Installation Link</b>	

### ELECTRICAL

<b>Dimming</b>	0-10V, DMX, DALI
<b>Luminaire Voltage</b>	120V - 277V (UNV)



### LAMP FEATURES

Lamp Type	BIOS SkyBlue™ LEDs
CRI	> 80
Efficacy*	156 Lumens per Watt

Note: Efficacy is based on Biological Static (BIOS-BS-35K) with Clear Lens (CL).

### LAMP SPECIFICATIONS

Lamp Number	Description	Efficacy (Lumens per Watt)	L70 LED Life
BIOS-BS-35K	Biological Static: 3500K Daytime	156	
BIOS-BD-35K-30K	Biological Dynamic: 3500K Daytime - 3000K Evening	156	60,000 hrs.
BIOS-BT-35K-27K	Biological Tunable: 3500K Daytime - 2700K Evening	156	

Note: Efficacy is based on 35K CCT LED with Clear Lens (CL).

Note: To calculate Lumens per Foot, multiply Efficacy by Watts per Foot.

Example: 156 Lumens per Watt x 4 Watts per Foot = 624 Lumens per Foot.

### OPTICS ORIENTATION



Asymmetric Lens Right (ASMR)



Asymmetric Lens Left (ASML)

Note: Refer to the above diagrams to understand optics orientation in relation to the power feed.

### LENS / OPTICS APPEARANCE



Clear Lens (CL)  
Visible Diode Image  
0% Loss Factor



50% Semi-Frosted Lens (SF)  
Slight Diode Image  
12.5% Loss Factor



100% Frosted Lens (F)  
No Diode Image: Line of Light  
25% Loss Factor

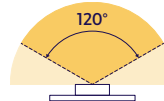


Asymmetric Lens (ASML, ASMR)  
Slight Diode Image  
18% Loss Factor

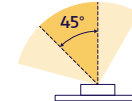


Optic Lens (15D, 30D, 45D, 60D)  
Slight Diode Image  
18% Loss Factor

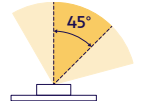
### BEAM ANGLES



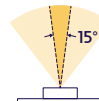
120° x 120° Beam  
Clear Lens (CL)  
50% Semi-Frosted Lens (SF)  
100% Frosted Lens (F)



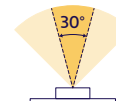
45° x 60° Beam  
Asymmetric Lens Left (ASML)



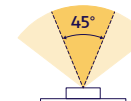
45° x 60° Beam  
Asymmetric Lens Right (ASMR)



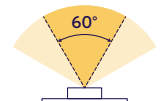
15° x 60° Beam  
Optic Lens (15D)



30° x 60° Beam  
Optic Lens (30D)



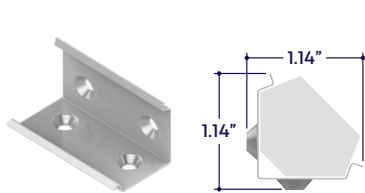
45° x 60° Beam  
Optic Lens (45D)



60° x 60° Beam  
Optic Lens (60D)

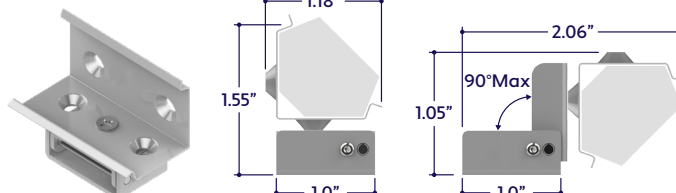
### MOUNTING OPTIONS (Sold Separately)

Note: Mounting clips are only available in Natural Silver Finish, unless otherwise specified.



Part #	Qty.
A1-ZUCO-CRN-MC	

Note: Use 1 mounting clip per 2', rounded up. Click on image to see cut sheet for details.



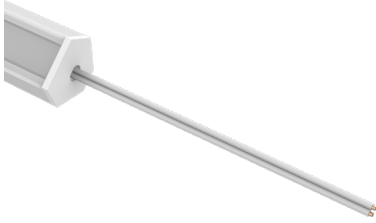
Part #	Qty.
A1-ZUCO-CRN-MC-ADJ	

Note: Use 1 mounting clip per 2', rounded up. Click on image to see cut sheet for details.



### POWER CONNECTORS (Sold Separately)

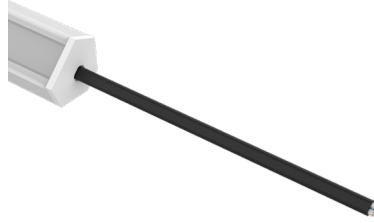
**Note:** Connectors are factory assembled to each run length. Connectors are subject to change without notice.



Dry Power Connector  
(Biological Static LEDs Only)  
(20/2 Gauge Wire)  
**(A1-ZUCO-CRN-BIOS-PC-BS-DRY-X)**  
X = Specify Length, 36" Default, 25' Maximum

Part #	Length	Qty.
A1-ZUCO-CRN-BIOS-PC-BS-DRY-	36"	
A1-ZUCO-CRN-BIOS-PC-BS-DRY-		

**Note:** Specify 1 Power Connector for each lead required.  
Power Connectors are factory assembled to each length.



Dry Power Connector with Black Jacket  
(Biological Static LEDs Only)  
(20/2 Gauge Wire)  
**(A1-ZUCO-CRN-BIOS-PC-BS-DRY-BK-X)**  
X = Specify Length, 36" Default, 25' Maximum

Part #	Length	Qty.
A1-ZUCO-CRN-BIOS-PC-BS-DRY-BK-	36"	
A1-ZUCO-CRN-BIOS-PC-BS-DRY-BK-		

**Note:** Specify 1 Power Connector for each lead required.  
Power Connectors are factory assembled to each length.



Dry Power Connector with White Jacket  
(Biological Static LEDs Only)  
(20/2 Gauge Wire)  
**(A1-ZUCO-CRN-BIOS-PC-BS-DRY-WH-X)**  
X = Specify Length, 36" Default, 25' Maximum

Part #	Length	Qty.
A1-ZUCO-CRN-BIOS-PC-BS-DRY-WH-	36"	
A1-ZUCO-CRN-BIOS-PC-BS-DRY-WH-		

**Note:** Specify 1 Power Connector for each lead required.  
Power Connectors are factory assembled to each length.



Dry Power Connector  
(Biological Dynamic LEDs Only)  
(20/3 Gauge Wire)  
**(A1-ZUCO-CRN-BIOS-PC-BD-DRY-X)**  
X = Specify Length, 36" Default, 25' Maximum

Part #	Length	Qty.
A1-ZUCO-CRN-BIOS-PC-BD-DRY-	36"	
A1-ZUCO-CRN-BIOS-PC-BD-DRY-		

**Note:** Specify 1 Power Connector for each lead required.  
Power Connectors are factory assembled to each length.



Dry Power Connector with Black Jacket  
(Biological Dynamic LEDs Only)  
(20/3 Gauge Wire)  
**(A1-ZUCO-CRN-BIOS-PC-BD-DRY-BK-X)**  
X = Specify Length, 36" Default, 25' Maximum

Part #	Length	Qty.
A1-ZUCO-CRN-BIOS-PC-BD-DRY-BK-	36"	
A1-ZUCO-CRN-BIOS-PC-BD-DRY-BK-		

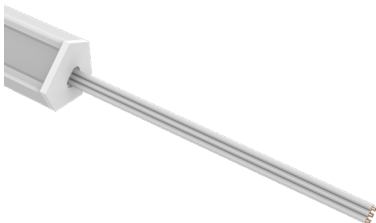
**Note:** Specify 1 Power Connector for each lead required.  
Power Connectors are factory assembled to each length.



Dry Power Connector with White Jacket  
(Biological Dynamic LEDs Only)  
(20/3 Gauge Wire)  
**(A1-ZUCO-CRN-BIOS-PC-BD-DRY-WH-X)**  
X = Specify Length, 36" Default, 25' Maximum

Part #	Length	Qty.
A1-ZUCO-CRN-BIOS-PC-BD-DRY-WH-	36"	
A1-ZUCO-CRN-BIOS-PC-BD-DRY-WH-		

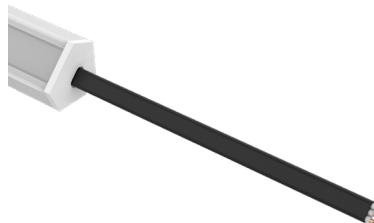
**Note:** Specify 1 Power Connector for each lead required.  
Power Connectors are factory assembled to each length.



Dry Power Connector  
(Biological Tunable LEDs Only)  
(20/3 Gauge Wire)  
**(A1-ZUCO-CRN-BIOS-PC-BT-DRY-X)**  
X = Specify Length, 36" Default, 25' Maximum

Part #	Length	Qty.
A1-ZUCO-CRN-BIOS-PC-BT-DRY-	36"	
A1-ZUCO-CRN-BIOS-PC-BT-DRY-		

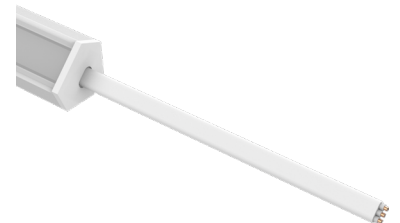
**Note:** Specify 1 Power Connector for each lead required.  
Power Connectors are factory assembled to each length.



Dry Power Connector with Black Jacket  
(Biological Tunable LEDs Only)  
(20/3 Gauge Wire)  
**(A1-ZUCO-CRN-BIOS-PC-BT-DRY-BK-X)**  
X = Specify Length, 36" Default, 25' Maximum

Part #	Length	Qty.
A1-ZUCO-CRN-BIOS-PC-BT-DRY-BK-	36"	
A1-ZUCO-CRN-BIOS-PC-BT-DRY-BK-		

**Note:** Specify 1 Power Connector for each lead required.  
Power Connectors are factory assembled to each length.



Dry Power Connector with White Jacket  
(Biological Tunable LEDs Only)  
(20/3 Gauge Wire)  
**(A1-ZUCO-CRN-BIOS-PC-BT-DRY-WH-X)**  
X = Specify Length, 36" Default, 25' Maximum

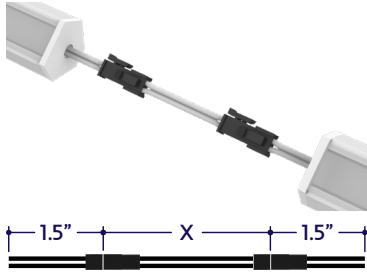
Part #	Length	Qty.
A1-ZUCO-CRN-BIOS-PC-BT-DRY-WH-	36"	
A1-ZUCO-CRN-BIOS-PC-BT-DRY-WH-		

**Note:** Specify 1 Power Connector for each lead required.  
Power Connectors are factory assembled to each length.



### CONTINUOUS CONNECTORS (Sold Separately)

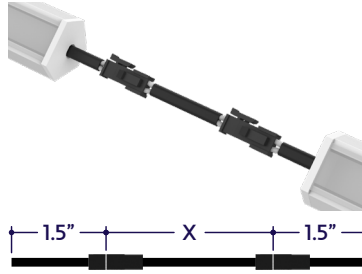
**Note:** Connectors are factory assembled to each run length. Connectors are subject to change without notice.



Dry Continuous Connector  
(Biological Static LEDs Only)  
(20/2 Gauge Wire)  
**(A1-ZUCO-CRN-BIOS-CC-BS-DRY-X)**  
X = Specify Length, 3" Default

Part #	Length	Qty.
A1-ZUCO-CRN-BIOS-CC-BS-DRY-	3"	
A1-ZUCO-CRN-BIOS-CC-BS-DRY-		

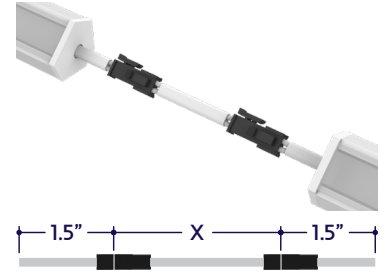
**Note:** Specify Continuous Connectors to traverse a gap or obstacle. Continuous Connectors are factory assembled to specified lengths.



Dry Continuous Connector with Black Jacket  
(Biological Static LEDs Only)  
(20/2 Gauge Wire)  
**(A1-ZUCO-CRN-BIOS-CC-BS-DRY-BK-X)**  
X = Specify Length, 3" Default

Part #	Length	Qty.
A1-ZUCO-CRN-BIOS-CC-BS-DRY-BK-	3"	
A1-ZUCO-CRN-BIOS-CC-BS-DRY-BK-		

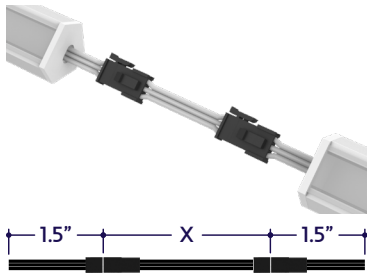
**Note:** Specify Continuous Connectors to traverse a gap or obstacle. Continuous Connectors are factory assembled to specified lengths.



Dry Continuous Connector with White Jacket  
(Biological Static LEDs Only)  
(20/2 Gauge Wire)  
**(A1-ZUCO-CRN-BIOS-CC-BS-DRY-WH-X)**  
X = Specify Length, 3" Default

Part #	Length	Qty.
A1-ZUCO-CRN-BIOS-CC-BS-DRY-WH-	3"	
A1-ZUCO-CRN-BIOS-CC-BS-DRY-WH-		

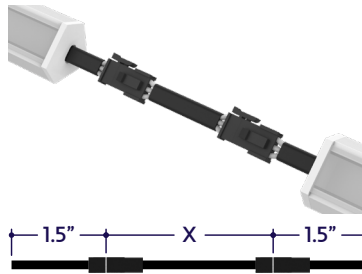
**Note:** Specify Continuous Connectors to traverse a gap or obstacle. Continuous Connectors are factory assembled to specified lengths.



Dry Continuous Connector  
(Biological Dynamic LEDs Only)  
(20/3 Gauge Wire)  
**(A1-ZUCO-CRN-BIOS-CC-BD-DRY-X)**  
X = Specify Length, 3" Default

Part #	Length	Qty.
A1-ZUCO-CRN-BIOS-CC-BD-DRY-	3"	
A1-ZUCO-CRN-BIOS-CC-BD-DRY-		

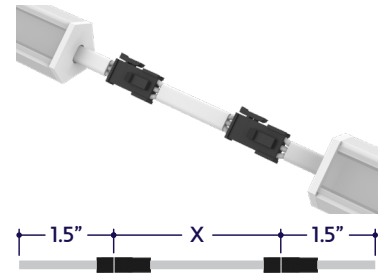
**Note:** Specify Continuous Connectors to traverse a gap or obstacle. Continuous Connectors are factory assembled to specified lengths.



Dry Continuous Connector with Black Jacket  
(Biological Dynamic LEDs Only)  
(20/3 Gauge Wire)  
**(A1-ZUCO-CRN-BIOS-CC-BD-DRY-BK-X)**  
X = Specify Length, 3" Default

Part #	Length	Qty.
A1-ZUCO-CRN-BIOS-CC-BD-DRY-BK-	3"	
A1-ZUCO-CRN-BIOS-CC-BD-DRY-BK-		

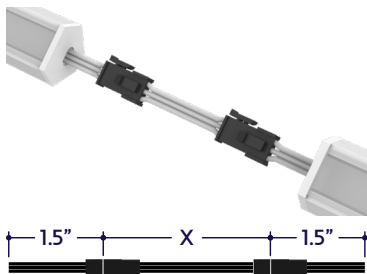
**Note:** Specify Continuous Connectors to traverse a gap or obstacle. Continuous Connectors are factory assembled to specified lengths.



Dry Continuous Connector with White Jacket  
(Biological Dynamic LEDs Only)  
(20/3 Gauge Wire)  
**(A1-ZUCO-CRN-BIOS-CC-BD-DRY-WH-X)**  
X = Specify Length, 3" Default

Part #	Length	Qty.
A1-ZUCO-CRN-BIOS-CC-BD-DRY-WH-	3"	
A1-ZUCO-CRN-BIOS-CC-BD-DRY-WH-		

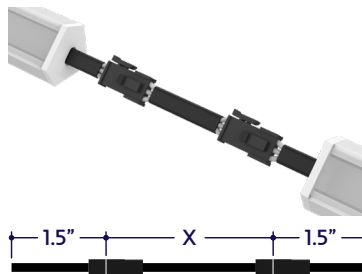
**Note:** Specify Continuous Connectors to traverse a gap or obstacle. Continuous Connectors are factory assembled to specified lengths.



Dry Continuous Connector  
(Biological Tunable LEDs Only)  
(20/3 Gauge Wire)  
**(A1-ZUCO-CRN-BIOS-CC-BT-DRY-X)**  
X = Specify Length, 3" Default

Part #	Length	Qty.
A1-ZUCO-CRN-BIOS-CC-BT-DRY-	3"	
A1-ZUCO-CRN-BIOS-CC-BT-DRY-		

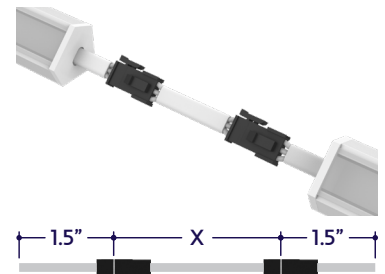
**Note:** Specify Continuous Connectors to traverse a gap or obstacle. Continuous Connectors are factory assembled to specified lengths.



Dry Continuous Connector with Black Jacket  
(Biological Tunable LEDs Only)  
(20/3 Gauge Wire)  
**(A1-ZUCO-CRN-BIOS-CC-BT-DRY-BK-X)**  
X = Specify Length, 3" Default

Part #	Length	Qty.
A1-ZUCO-CRN-BIOS-CC-BT-DRY-BK-	3"	
A1-ZUCO-CRN-BIOS-CC-BT-DRY-BK-		

**Note:** Specify Continuous Connectors to traverse a gap or obstacle. Continuous Connectors are factory assembled to specified lengths.



Dry Continuous Connector with White Jacket  
(Biological Tunable LEDs Only)  
(20/3 Gauge Wire)  
**(A1-ZUCO-CRN-BIOS-CC-BT-DRY-WH-X)**  
X = Specify Length, 3" Default

Part #	Length	Qty.
A1-ZUCO-CRN-BIOS-CC-BT-DRY-WH-	3"	
A1-ZUCO-CRN-BIOS-CC-BT-DRY-WH-		

**Note:** Specify Continuous Connectors to traverse a gap or obstacle. Continuous Connectors are factory assembled to specified lengths.

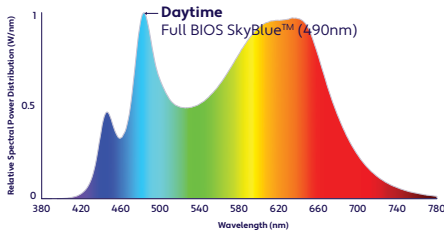
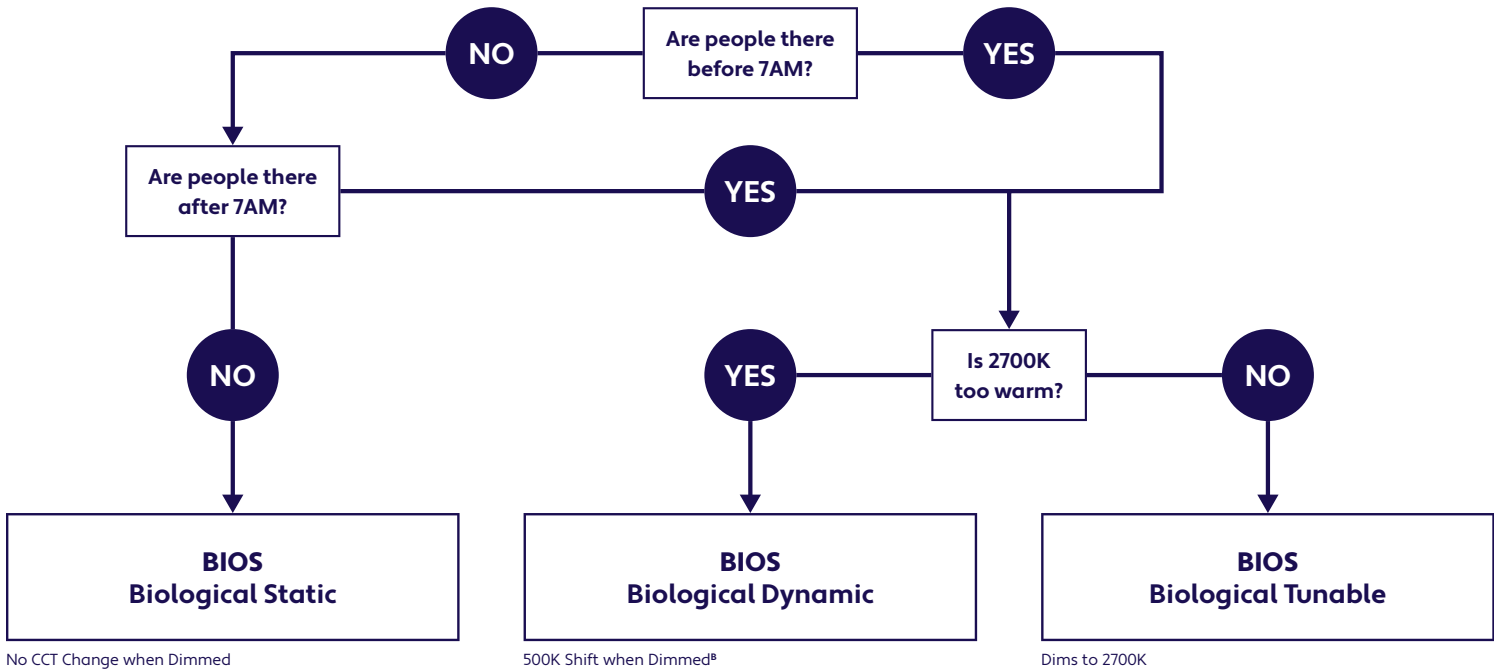
### DELIVERED MELANOPIC RATIOS

BIOS Solution / Nominal CCT / Product Code	Spectral Mode	CRI	R9	Daytime Spectrum Melanopic Ratio* (M/P)	
				m-EER	m-DER
BIOS Biological Static: 3500K Daytime (BIOS-BS-35K)	Daytime Solution	80+	> 90	≥ 0.80	≥ 0.72
BIOS Biological Dynamic: 3500K Daytime - 3000K Evening (BIOS-BD-35K-30K)	Daytime + Evening Solution	80+	> 90	≥ 0.70	≥ 0.63
BIOS Biological Tunable: 3500K Daytime - 2700K Evening (BIOS-BT-35K-27K)	Daytime + Evening Solution	80+	> 90	≥ 0.80	≥ 0.72

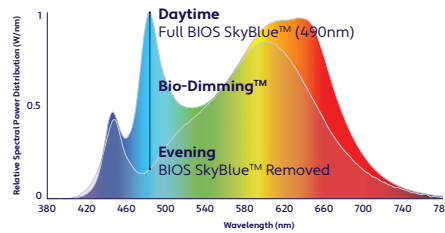
\*Melanopic ratios are provided in two forms: (m-EER) which is calculated using the WELL v2 methodology and the corresponding CIE melanopic Daylight Equivalent Ratio, (m-DER).

### CHOOSING YOUR BIOS SOLUTION

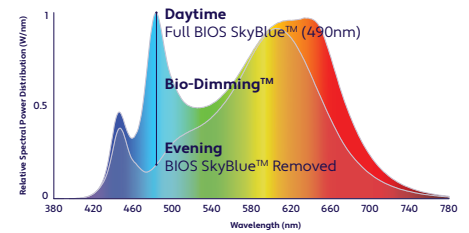
ALUZ offers four different BIOS Circadian LED Solutions – Biological Static, Biological Dynamic, and Biological Tunable White. Use the decision tree below to identify when and where to use BIOS Wellness LED Lighting Solutions .



**Daytime Solution**  
(Offices, Medical / Dental Offices)  
Spaces in operation during daytime hours, between 7AM and 7PM.



**Daytime + Evening Solution**  
(Hospitals)  
Spaces in operation overnight, after 7PM and before 7AM.  
CCT color shift in the evening not preferred.  
(<sup>B</sup>3000K dims to 2700K)

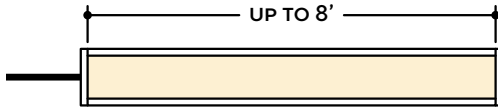


**Daytime + Evening Solution**  
(Offices, Shiftwork)  
Spaces in operation overnight, after 7PM and before 7AM and people do not sleep there.  
CCT color shift in the evening not preferred.

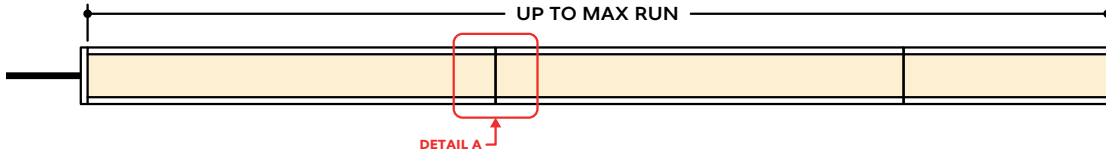


## DESIGN GUIDELINES

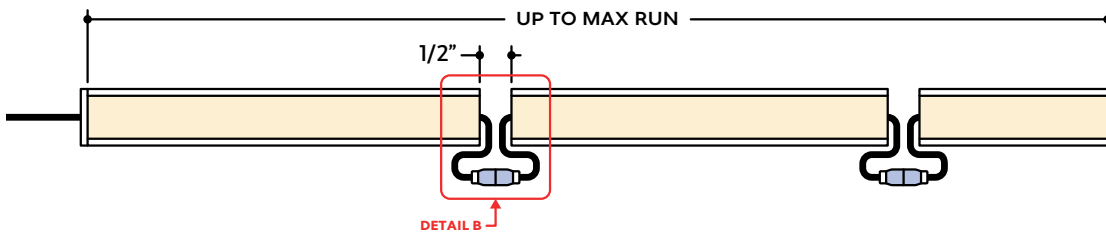
### Individual Fixture



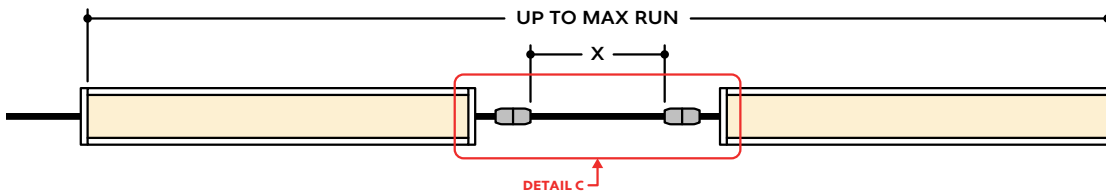
### Continuous Run (Dry Location)



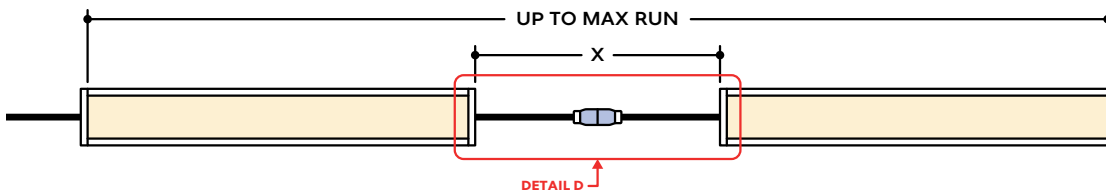
### Continuous Run (Wet Location)



### Runs with Continuous Connector (Dry Location)



### Runs with Continuous Connector (Wet Location)

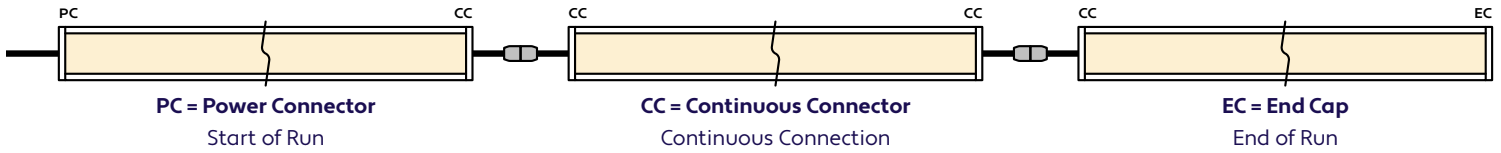


## KEY

- Detail A** **Continuous Connection (Dry Location):** Luminaire segments connect using pins, leaving no gaps between segments, with a mounting clip holding the two segments together. Refer to installation instructions for additional information.
- Detail B** **Continuous Connection (Wet Location):** Luminaire segments are connected using a provided splice connector, with a 1/2" gap between segments.
- Detail C** **Dry Continuous Connector:** Used to span a corner or traverse a gap, corner, or obstacle in a dry location installation area.
- Detail D** **Wet Continuous Connector:** Used to span a corner or traverse a gap, corner, or obstacle in a wet location installation area.

**Note:** Drawings not to scale. Product may differ from examples shown.

## CONNECTION SEQUENCE

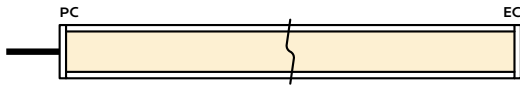


- Specifying a layout is not required to place an order.
- Configuration code applies to full length ordered and will be built per the Continuous Run models on Design Guidelines.
- Connector type subject to change based on availability and listing. Refer to Design Guidelines for details.

## HOW TO SPECIFY CONFIGURATIONS

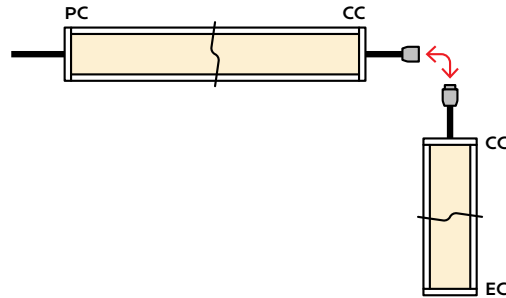
### Example: 20' Straight Run

- 1x A1-ZUCO-CRN-BIOS-CL-NA-BS-35K-10W-10V-DRY-UNV-9'-PC-EC



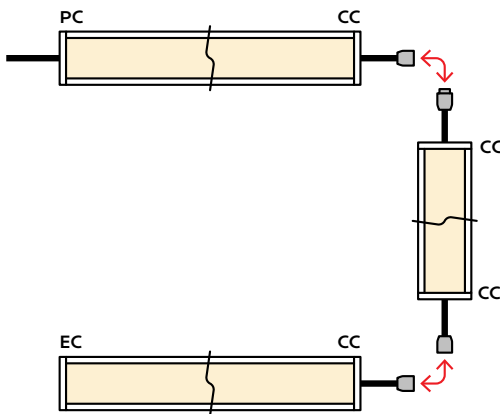
### Example: 25' L-Shaped Run

- 1x A1-ZUCO-CRN-BIOS-CL-NA-BS-35K-10W-10V-DRY-UNV-6'-PC-CC
- 1x A1-ZUCO-CRN-BIOS-CL-NA-BS-35K-10W-10V-DRY-UNV-7'-CC-EC



### Example: 30' U-Shaped Run

- 1x A1-ZUCO-CRN-BIOS-CL-NA-BS-35K-10W-10V-DRY-UNV-6'-PC-CC
- 1x A1-ZUCO-CRN-BIOS-CL-NA-BS-35K-10W-10V-DRY-UNV-9'-CC-CC
- 1x A1-ZUCO-CRN-BIOS-CL-NA-BS-35K-10W-10V-DRY-UNV-6'-CC-EC



### Example: 28' Rectangle Shaped Run

- 1x A1-ZUCO-CRN-BIOS-CL-NA-BS-35K-10W-10V-DRY-UNV-5'-PC-CC
- 1x A1-ZUCO-CRN-BIOS-CL-NA-BS-35K-10W-10V-DRY-UNV-3'-CC-CC
- 1x A1-ZUCO-CRN-BIOS-CL-NA-BS-35K-10W-10V-DRY-UNV-5'-CC-CC
- 1x A1-ZUCO-CRN-BIOS-CL-NA-BS-35K-10W-10V-DRY-UNV-3'-CC-EC

