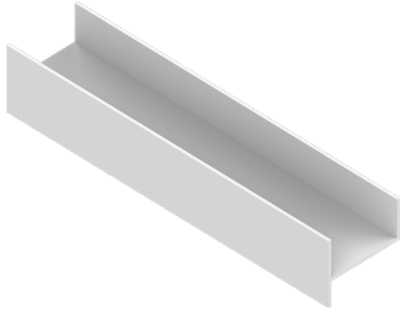
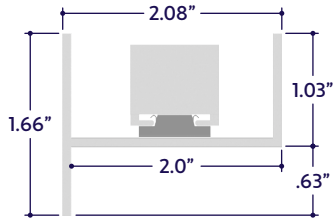




Perspective View



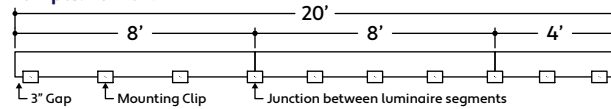
Assembled Dimensions



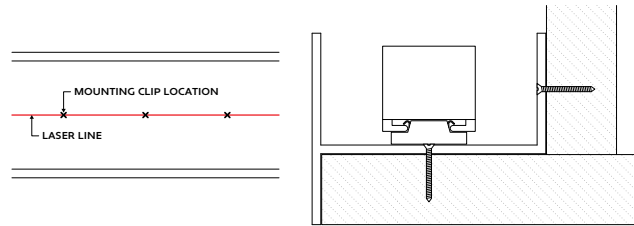
1 Measure area where luminaire will be installed. Use a laser line to create a reference line along installation area, ensuring consistent alignment of mounting channels. Mark location where each mounting channel segment will be installed along reference line.

2 Cut desired channels to length and lay end to end.

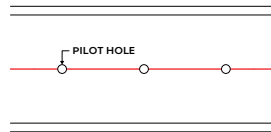
3 Determine number of mounting clips required. Use 1 mounting clip every 2', rounded up. Use a minimum of 2 mounting clips per luminaire segment. Use a mounting clip at the junction between two luminaire segments.
Example: 20' Run.



4 Mark location where mounting clips will be installed inside the channel. Use a laser line or jig to create a reference line inside surface, ensuring consistent alignment of mounting clips. Mark location where each mounting clip will be installed along reference line. Center the fixture inside the channel.

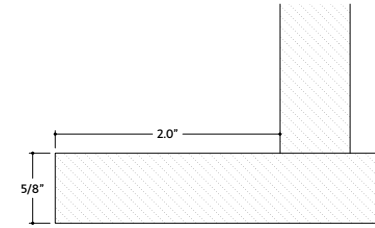


5 Drill pilot holes at each location where mounting clips will be installed. Lay mounting clips along reference line and pre-drill using an appropriate drill bit for surface and screw size. Typical screw size is 8/32 x 1".

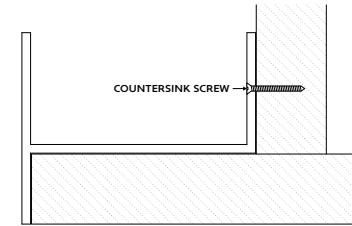


A1 Series | Surface ZUCO Standard - Mounting Channel (A1-ZUCO-STN-UCH-8')

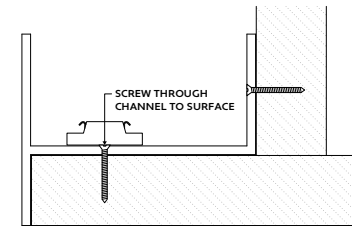
6 Prepare mounting surface dimensions per the diagram below. Only mount channels to a solid surface such as wood, concrete, or metal.



7 Secure mounting channel segments to surface using countersink screws of appropriate type and length for surface material. Drill countersink holes in back wall of mounting channel to secure to surface. The mounting channel must be mounted to surface using at least 3 screws per 8'. Use additional screws as needed.



8 Once mounting channels are secured, screw mounting clips to surface. **Recommendation:** 8/32 x 1" countersink screw.



9 Snap fixture segments into mounting clips.

