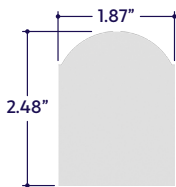


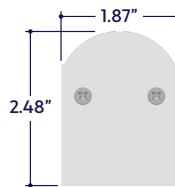
GENERAL FEATURES

Applications	Surface Mount Direct View
Lens	100% Frosted (No Pixelation: Line of Light)
Length	<p>Built to Order: Custom lengths up to 8' (No Seams) Specify Overall Length (Minimum: 2', Maximum: 8') Example: 7'8" = One 7'8" luminaire (Custom Length) Example: 3'2" = One 3'2" luminaire (Custom Length) Example: 13'6" = 8' + 5'6" Example: 23'8" = 8' + 8' + 7'8" See Length Restrictions Table for details</p>
Construction	Aluminum Extrusion
Weight	1.09 lbs per Foot
Mounting	Mounting Plates (Sold Separately)
Listing	<p>Dry or Damp Location UL1598, CSA C22.2#250.0 UL8750, CSA250 UL2108, 67.1.9, 60.4, CSA C22.2 #9</p>
Driver	Integral (Driver on Board)
Temperature Ratings	<p>Operating / Startup: -20° to 48°C (-4° to 120°F) Storage: -40° to 76°C (-40° to 170°F)</p>
Installation Link	

END VIEWS / DIMENSIONS

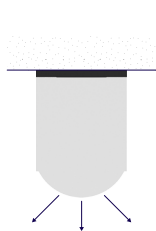


Dry or Damp Location
(No Visible Screws)

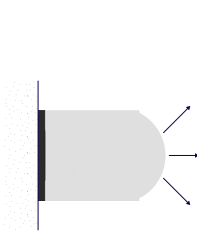


Wet Location
(Visible Screws)

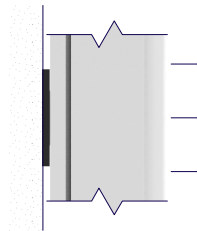
MOUNTING OPTIONS



Surface Mount



Horizontal Mount



Vertical Mount

Note: Arrows indicate direction of light.
Do not install Wet Location luminaires with the lens facing upwards.

ELECTRICAL

Dimming	0-10V, DMX, DALI
Luminaire Voltage	120V - 277V (UNV)

SPECIFY PRODUCT CODE | CHOOSE FROM DROP DOWNS

Series	Finish	BIOS LED	Watts per Foot	Dimming	Feed Point	Listing	Luminaire Voltage ⁵	Luminaire Length
						BFF	UNV	
A1-ZYZY-RND-BIOS	White (WH)	BIOS Biological Static: 3500K Daytime ¹ (BS-35K)	15 Watts (15W) 232 Lumens / ft ⁴	0-10V (10V)	Bottom Face Feed (BFF)	Indoor (DRY)	120 - 277V Line Voltage (UNV)	Specify Length in Feet & Inches Example: 7'8"
			2 Watts (2W) 310 Lumens / ft ⁴					
	Satin (SA)	BIOS Biological Dynamic: 3500K Daytime - 3000K Evening ² (BD-35K-30K)	3 Watts (3W) 465 Lumens / ft ⁴	DALI (DALI)	Outdoor (DAMP)			
			4 Watts (4W) 620 Lumens / ft ⁴					
	Black (BK)	BIOS Biological Tunable: 3500K Daytime - 2700K Evening ³ (BT-35K-27K)	5 Watts (5W) 775 Lumens / ft ⁴	DMX-512 (DMX)				
			6 Watts (6W) 930 Lumens / ft ⁴					
			8 Watts (8W) 1240 Lumens / ft ⁴					
			10 Watts (10W) 1550 Lumens / ft ⁴					
			12 Watts (12W) 1860 Lumens / ft ⁴					

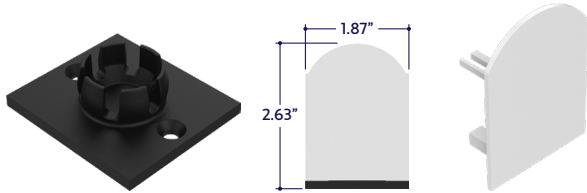
¹ BIOS Biological Static available in standard 3500K Daytime CCT. Consult factory for other color temperature options.
² BIOS Biological Dynamic available in standard 3500K Daytime - 3000K Evening CCT gamut. Consult factory for other color temperature options.
³ BIOS Biological Tunable available in standard 3500K Daytime - 2700K Evening CCT gamut. Consult factory for other color temperature options.
⁴ Lumens per Foot based on 35K CCT LED. **Example:** 155 Lumens x 10 Watts = 1550 Lumens per Foot.
⁵ Integral drivers wattage sized based on length of run. **Example:** 6' run x 10 watts per foot = 60 watts. Driver will be sized to 60 watts maximum.

MINIMUM & MAXIMUM RUNS

Wattage	1.5W	2W	3W	4W	5W	6W	8W	10W	12W
0-10V & DALI Minimum Run	4'	3'	2'	2'	2'	1'	1'	1'	1'
0-10V & DALI Maximum Run	39'	27'	19'	14'	11'	9'	7'	6'	5'
DMX Minimum Run	4'	3'	2'	2'	2'	1'	1'	1'	1'
DMX Maximum Run	26'	18'	13'	9'	8'	6'	4'	4'	3'

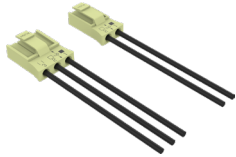
MOUNTING OPTIONS (Sold Separately)

Note: Mounting clips are only available in Natural Silver Finish, unless otherwise specified.



Part #	Qty.
A1-ZYZY-RND-MP	

Note: Use 2 Mounting Plates for each luminaire segment under 6'. Use 3 Mounting Plates per luminaire segment between 6' - 8'. Click on image to see cut sheet for additional details.



Hardwire Disconnects
(A1-PC-5P-HWD)

Part #	Qty.
A1-PC-5P-HWD	

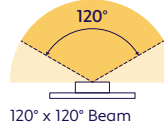
Note: Use Hardwire Disconnects for conduit power feed applications.

Dry Location End Cap
(A1-ZYZY-RND-EC)

Part #	Qty.
A1-ZYZY-RND-EC	

Note: Use 1 End Cap for each Dry Location run termination.

BEAM ANGLES

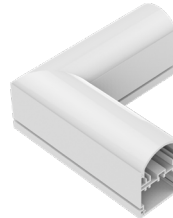


FEED POINT



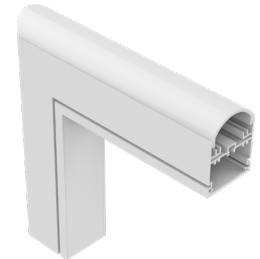
Bottom Face Feed
(BFF)

MITERED CORNERS (Sold Separately)



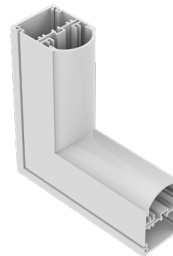
Illuminated 90° Linear Corner
(A1-ZYZY-RND-BIOS-90D)

Part #	Qty.
A1-ZYZY-RND-BIOS-90D	



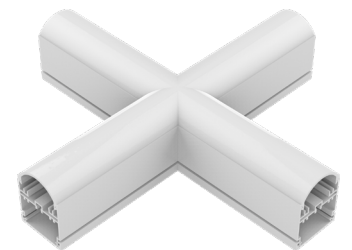
Illuminated 90° External Corner
(A1-ZYZY-RND-BIOS-90D-EX)

Part #	Qty.
A1-ZYZY-RND-BIOS-90D-EX	



Illuminated 90° Internal Corner
(A1-ZYZY-RND-BIOS-90D-IN)

Part #	Qty.
A1-ZYZY-RND-BIOS-90D-IN	



Illuminated 90° X Corner
(A1-ZYZY-RND-BIOS-90D-XC)

Part #	Qty.
A1-ZYZY-RND-BIOS-90D-XC	

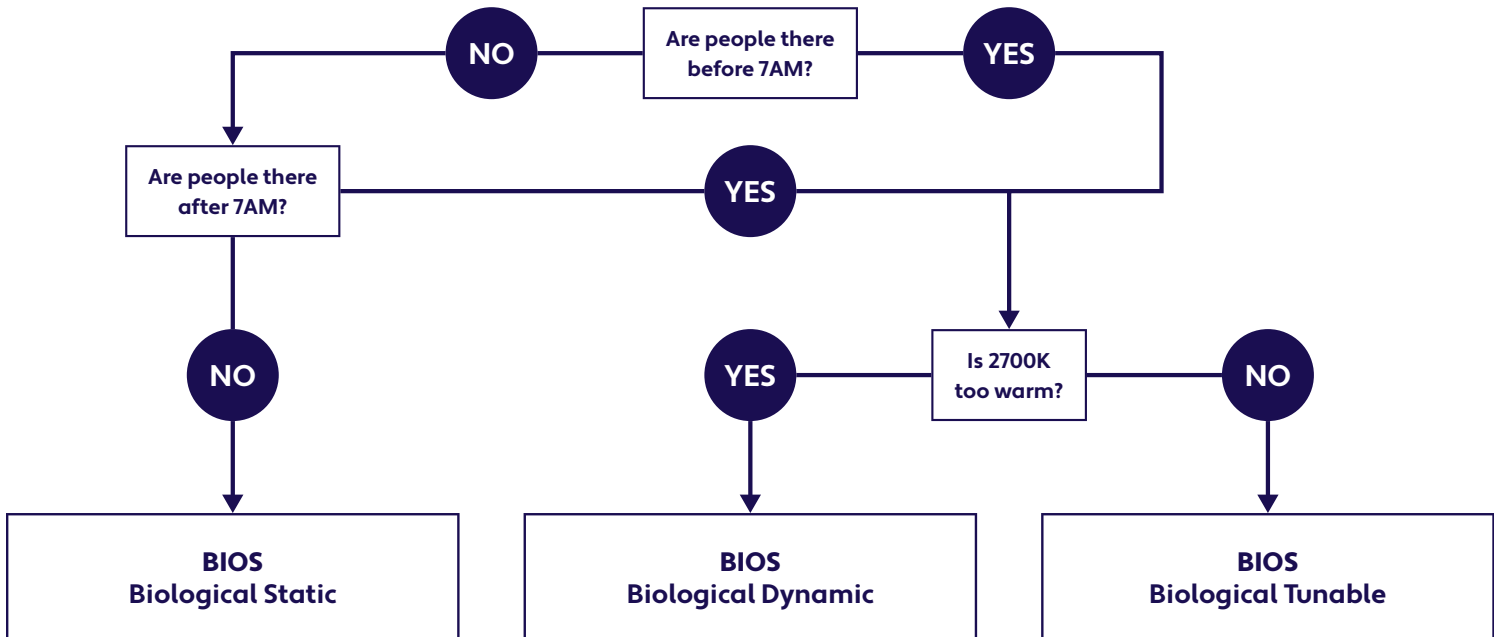
DELIVERED MELANOPIC RATIOS

BIOS Solution / Nominal CCT / Product Code	Spectral Mode	CRI	R9	Daytime Spectrum Melanopic Ratio* (M/P)	
				m-EER	m-DER
BIOS Biological Static: 3500K Daytime (BIOS-BS-35K)	Daytime Solution	80+	> 90	≥ 0.80	≥ 0.72
BIOS Biological Dynamic: 3500K Daytime - 3000K Evening (BIOS-BD-35K-30K)	Daytime + Evening Solution	80+	> 90	≥ 0.70	≥ 0.63
BIOS Biological Tunable: 3500K Daytime - 2700K Evening (BIOS-BT-35K-27K)	Daytime + Evening Solution	80+	> 90	≥ 0.80	≥ 0.72

*Melanopic ratios are provided in two forms: (m-EER) which is calculated using the WELL v2 methodology and the corresponding CIE melanopic Daylight Equivalent Ratio, (m-DER).

CHOOSING YOUR BIOS SOLUTION

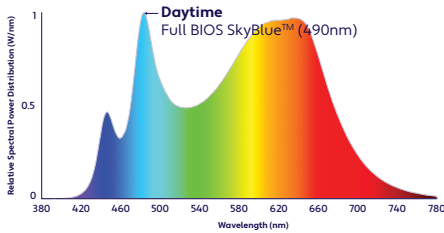
ALUZ offers four different BIOS Circadian LED Solutions – Biological Static, Biological Dynamic, and Biological Tunable White. Use the decision tree below to identify when and where to use BIOS Wellness LED Lighting Solutions .



No CCT Change when Dimmed

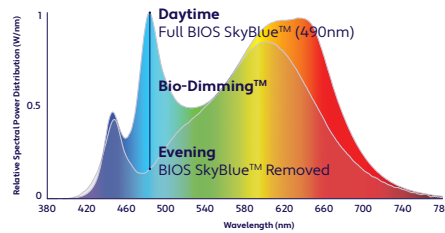
500K Shift when Dimmed^B

Dims to 2700K



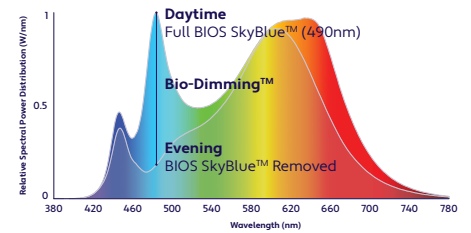
Daytime Solution
(Offices, Medical / Dental Offices)

Spaces in operation during daytime hours, between 7AM and 7PM.



Daytime + Evening Solution
(Hospitals)

Spaces in operation overnight, after 7PM and before 7AM. CCT color shift in the evening not preferred.
(^B3000K dims to 2700K)

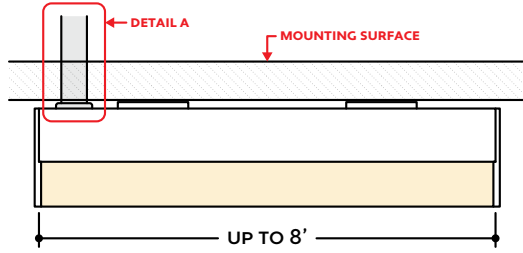


Daytime + Evening Solution
(Offices, Shiftwork)

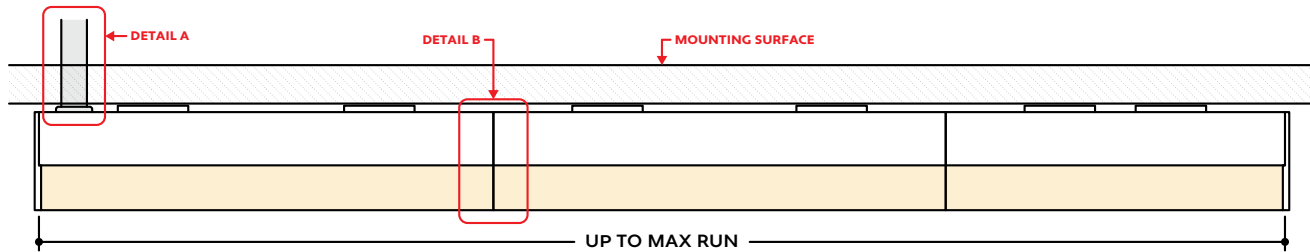
Spaces in operation overnight, after 7PM and before 7AM and people do not sleep there. CCT color shift in the evening not preferred.

DESIGN GUIDELINES

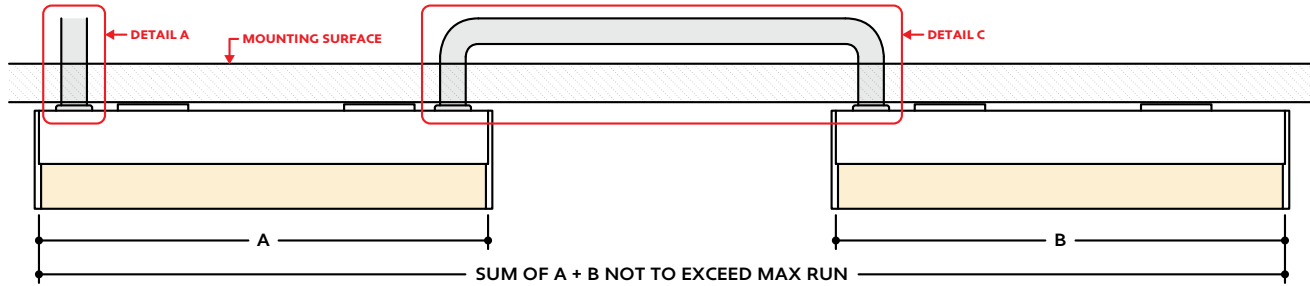
Individual Fixture



Continuous Run



Run with Conduit Jumper



KEY

- Detail A Conduit Power Feed:** Power is fed to the run via conduit. Conduit & conduit fittings by others.
- Detail B Continuous Connection:** Luminaire segments connect using internal continuous connectors, leaving no gaps between segments. Refer to installation instructions for additional information.
- Detail D Conduit Jumper:** A conduit jumper is used to span a corner or traverse a gap or obstacle in the installation area. Conduit & conduit fittings by others.

Note: Drawings not to scale. Product may differ from examples shown.