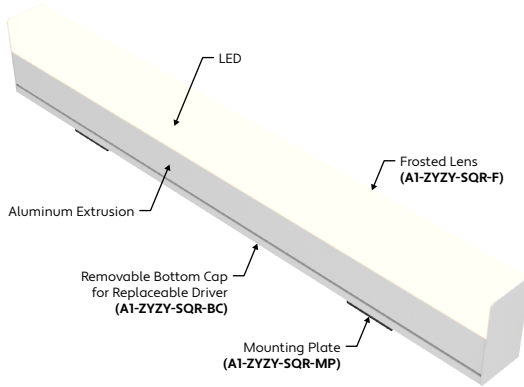


ALUZ

A1 Series | Surface ZYZY Square (A1-ZYZY-SQR)

TYPE



SINGLE
BIN
+30K

TITLE 24
JA8

✓ TM-30
✓ LM-79
✓ LM-80

DRY
WET

ROHS
COMPLIANT

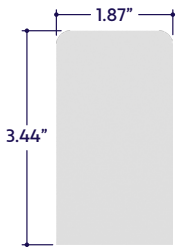
CLOSET
RATED



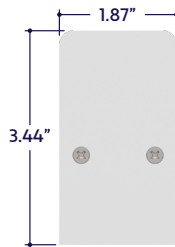
GENERAL FEATURES

Applications	Surface Mount Direct View
Lens	100% Frosted (No Pixelation: Line of Light)
Length	Built to Order: Custom lengths up to 8' (No Seams) Specify Overall Length (Minimum: 2', Maximum: 8') Example: 7'8" = One 7'8" luminaire (Custom Length) Example: 3'2" = One 3'2" luminaire (Custom Length) Example: 13'6" = 8' + 5'6" Example: 23'8" = 8' + 8' + 7'8"
Construction	Aluminum Extrusion
Weight	1.09 lbs per Foot
Mounting	Mounting Plates (Sold Separately)
Listing	Dry, Damp, or Wet Location UL1598, CSA C22.2#250.0 UL8750, CSA250 UL2108, 67.1.9, 60.4, CSA C22.2 #9
Driver	Integral (Driver on Board)
Closet Rating	Up to 4 Watts per Foot Maximum
Temperature Ratings	Operating / Startup: -20° to 48°C (-4° to 120°F) Storage: -40° to 76°C (-40° to 170°F)
Installation Link	

END VIEWS / DIMENSIONS



Dry or Damp Location
(No Visible Screws)



Wet Location
(Visible Screws)

ELECTRICAL

Dimming	0-10V, DMX, DALI
Maximum Run (Line Voltage Integral Driver)	80' (4W), 64' (5W), 53' (6W), 40' (8W), 26' (12W)
Luminaire Voltage	120V - 277V (UNV)

SPECIFY PRODUCT CODE | CHOOSE FROM DROP DOWNS

Series	Finish	CCT LED	Watts per Foot	Dimming	Feed Point	Listing	Luminaire Voltage	Luminaire Length
A1-ZYZY-SQR					BFF		UNV	
ZYZY Square (A1-ZYZY-SQR)	White (WH)	2400K (24K)	4 Watts: 448 Lumens / ft ^a (4W)	0-10V: 100% - .1% (10V)	Bottom Face Feed (BFF)	Indoor (DRY)	120V - 277V Line Voltage ^{a2} (UNV)	Specify Length in Feet & Inches Example: 7'8"
	Satin (SA)	2700K (27K)		JAB 0-10V (JAB-10V)				
	Black (BK)	3000K (30K)	5 Watts: 560 Lumens / ft ^a (5W)	DMX-S12 ^{a3} (DMX)		Outdoor (DAMP)		
		3500K (35K)		DALI ^{a3} (DALI)				
		4000K (40K)	6 Watts: 672 Lumens / ft ^a (6W)			Outdoor ^{a4} (WET)		
		4500K (45K)						
		5000K (50K)	8 Watts: 896 Lumens / ft ^a (8W)					
		5700K (57K)						
	Red (R)		12 Watts: 1344 Lumens / ft ^a (12W)					
	Green (G)							
	Blue (B)							
	Amber (A)							

Note: Maximum length for line voltage (Integral Driver) is 320 Watts per run
Example: 320 Watts ÷ 8 Watts per Foot = 40 feet max run.

^{a1} Lumens per Foot based on 35K CCT LED.

Example: 98 Lumens x 4 Watts = 392 Lumens per Foot.

^{a2} Default DMX address of each fixture is 001. Consult third party DMX commissioner to modify at time of installation.
Minimum luminaire length: 2'

^{a3} DALI commissioning to be performed by a third party at time of installation. ALUZ does not provide DALI commissioning.
Minimum luminaire length: 2'

^{a4} Wet Location Listing is conditional on mounting orientation. Refer to Mounting Options for details.

^{a5} Integral drivers wattage sized based on length of run.

Example: 5' run x 4 Watts per Foot = 20 Watts. Driver will be sized to 20 Watts maximum.

1170 N Red Gum St, Anaheim, CA 92806

aluz.lighting | info@aluz.lighting | 866.ALUZ.LTG | 714.535.7900

© ALUZ All Rights Reserved. ALUZ reserves the right to make changes or withdraw specifications without prior notice.

Specification Submittal

Page 1 of 4

3 / 13 / 2022 / Rev 9



LAMP FEATURES

Lamp Type High Output LEDs (No Mercury)

CRI > 90

Efficacy
(Based on 35K CCT LED) 98 Lumens per Watt

LAMP SPECIFICATIONS

Lamp Number	Correlated Color Temperature / Description	Efficacy (Lumens per Watt)	L70 LED Life
24K	2400 Kelvin (Incandescent White)	132	60,000 hrs.
27K	2700 Kelvin (Warm White)	132	
30K	3000 Kelvin (Warm White)	132	
35K	3500 Kelvin (Neutral White)	132	
40K	4000 Kelvin (Neutral White)	132	
45K	4500 Kelvin (Neutral White)	132	40,000 hrs.
50K	5000 Kelvin (Cool White)	132	
57K	5700 Kelvin (Cool White)	132	
R	Red (621nm)		
G	Green (525nm)		
B	Blue (470nm)		
A	Amber (590nm)		

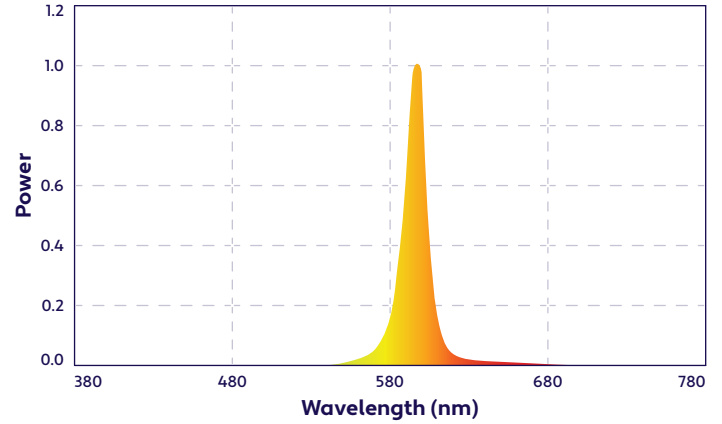
To calculate Lumens per Foot, multiply Efficacy by Watts per Foot.
Example: 132 Lumens per Watt x 4 Watts per Foot = 528 Lumens per Foot.

FEED POINTS

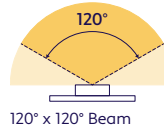


Bottom Face Feed (BFF)

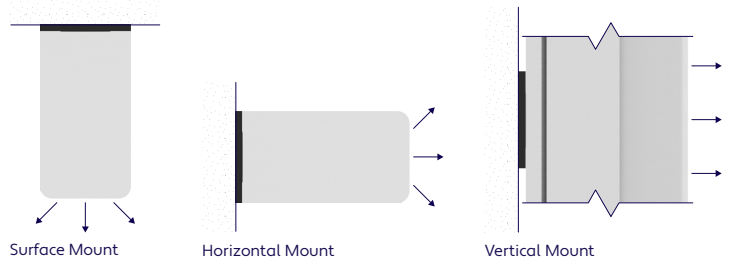
SPECTRAL POWER DISTRIBUTION AMBER LED (590nm) TURTLE FRIENDLY



BEAM ANGLES



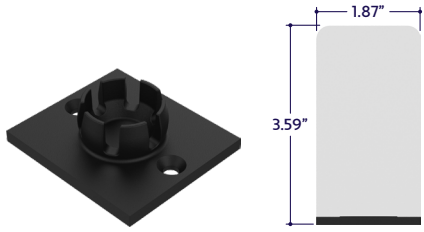
MOUNTING OPTION



Note: Arrows indicate direction of light.
 Do not install Wet Location luminaires with the lens facing upwards.

MOUNTING OPTIONS (Sold Separately)

Note: Mounting clips are only available in Natural Silver Finish, unless otherwise specified.



Part #	Qty.
A1-ZYZY-SQR-MP	

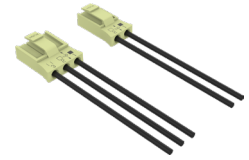
Note: Use 2 Mounting Plates for each luminaire segment under 6'.
Use 3 Mounting Plates per luminaire segment between 6' - 8'.
Click on image to see cut sheet for additional details.



Dry Location End Cap
(A1-ZYZY-SQR-EC)

Part #	Qty.
A1-ZYZY-SQR-EC	

Note: Use 1 End Cap for each Dry Location run termination.



Hardwire Disconnects
(A1-PC-5P-HWD)

Part #	Qty.
A1-PC-5P-HWD	

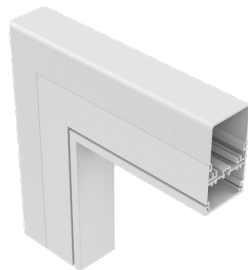
Note: Use Hardwire Disconnects for conduit power feed applications.

MITERED CORNERS (Sold Separately - Dry or Damp Location Only)



Illuminated 90° Linear Corner
(A1-ZYZY-SQR-90D)

Part #	Qty.
A1-ZYZY-SQR-90D	



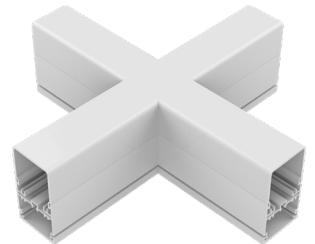
Illuminated 90° External Corner
(A1-ZYZY-SQR-90D-EX)

Part #	Qty.
A1-ZYZY-SQR-90D-EX	



Illuminated 90° Internal Corner
(A1-ZYZY-SQR-90D-IN)

Part #	Qty.
A1-ZYZY-SQR-90D-IN	

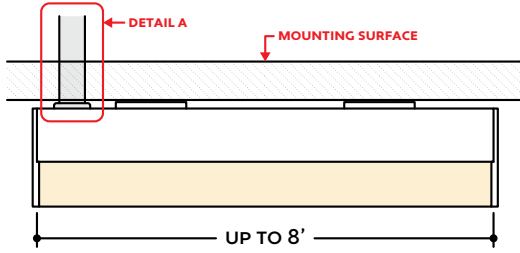


Illuminated 90° X Corner
(A1-ZYZY-SQR-90D-XC)

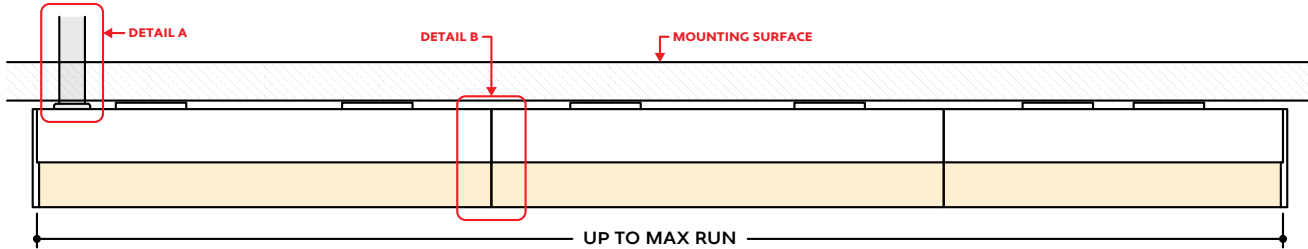
Part #	Qty.
A1-ZYZY-SQR-90D-XC	

DESIGN GUIDELINES

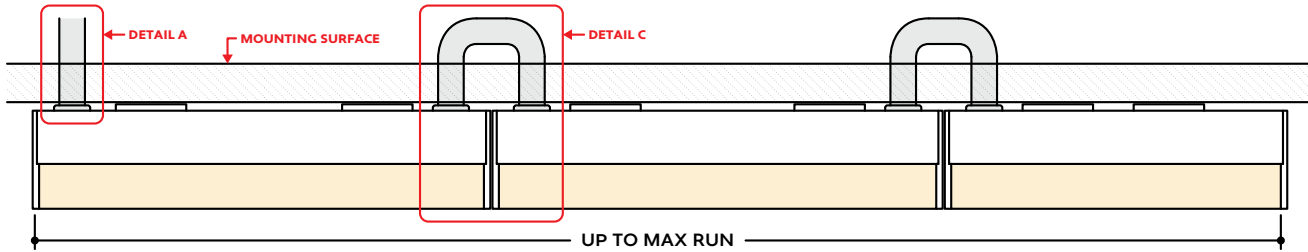
Individual Fixture (Dry or Wet Location)



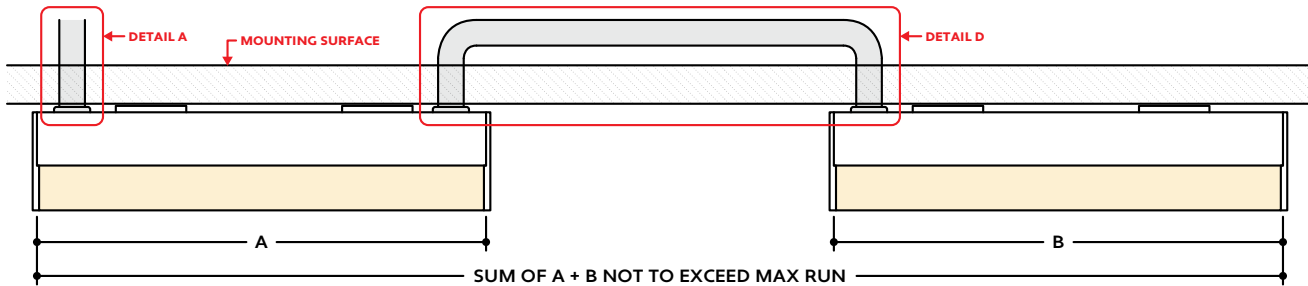
Continuous Run (Dry Location)



Continuous Run (Wet Location)



Run with Conduit Jumper (Dry or Wet Location)



KEY

- Detail A** **Conduit Power Feed:** Power is fed to the run via conduit. Conduit & conduit fittings by others.
- Detail B** **Continuous Connection (Dry Location):** Luminaire segments connect using internal continuous connectors, leaving no gaps between segments. Refer to installation instructions for additional information.
- Detail C** **Continuous Connection (Wet Location):** Luminaire segments connect using flex conduit, hidden behind mounting surface. Conduit & conduit fittings by others.
- Detail D** **Conduit Jumper (Dry or Wet Location):** A conduit jumper is used to span a corner or traverse a gap or obstacle in the installation area. Conduit & conduit fittings by others.

Note: Drawings not to scale. Product may differ from examples shown.