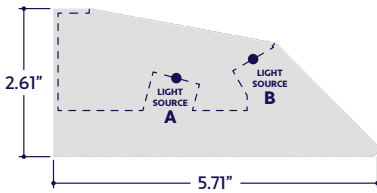
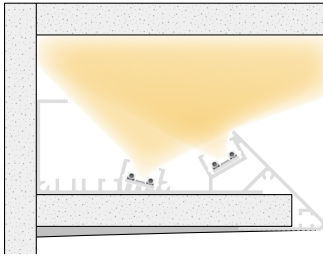




### END VIEW / DIMENSIONS



### MOUNTING OPTION



Mud-In / Plaster

### GENERAL FEATURES

<b>Applications</b>	Knife Edge Cove Lighting
<b>Lens</b>	Clear
<b>Length</b>	Built to Order (+/- 0.25" Tolerance)
<b>Construction</b>	Aluminum Extrusion
<b>Finish</b>	White Powder Coated
<b>Weight</b>	1.5 lbs per foot
<b>Mounting</b>	Direct Mount / Mud-In
<b>Listing</b>	Dry or Damp Location UL1598, CSA C22.2#250.0 UL8750, CSA250 UL2108, 67.1.9, 60.4, CSA C22.2 #9
<b>Driver</b>	Remote
<b>Closet Rating</b>	Up to 4 Watts per Foot Maximum
<b>Temperature Ratings</b>	Operating / Startup: -20° to 48°C (-4° to 120°F) Storage: -40° to 76°C (-40° to 170°F)
<b>Installation Link</b>	

### ELECTRICAL

<b>Dimming</b>	0-10V, DMX, DALI (Type 6)
<b>Maximum Run* (Class 2 Applications)</b>	36' (2W), 28' (3W), 21' (4W), 14' (6W), 10' (8W), 8' (10W), 7' (12W), 6' (14W)
<b>Luminaire Voltage</b>	120-277VAC (UNV)

\* Maximum Runs refer to each light source.  
Runs ordered with mismatched light source wattages will be built to the smaller max run.

### COMPATIBLE CONTROL INTERFACES

- 0-10V
- DALI2
- DMX
- Acuity Controls / nLight
- eldoLED
- Distech Controls
- Legrand
- Wattstopper
- Pass & Seymour
- Leviton
- Crestron / Cresnet / SolarSync
- Eaton
- Tridonic / Bluetooth

### SPECIFY PRODUCT CODE | CHOOSE FROM DROP DOWNS

Series	CCT Gamut		Watts Per Foot (Light Source A)* <sup>1</sup>	Watts Per Foot (Light Source B)* <sup>1</sup>	Control Interface	Listing	Luminaire Voltage <sup>5</sup>	Luminaire Length
	Low CCT	High CCT						
<b>A2-ZELO-KNF-DWH</b>							<b>UNV</b>	
ZELO Knife Edge Dynamic White (A2-ZELO-KNF)	2000K (20K)	3000K (30K)	2 Watts: 230 Lumens / ft* <sup>2</sup> (2W)	2 Watts: 230 Lumens / ft* <sup>2</sup> (2W)	DALI* <sup>3</sup> (DALI)	Indoor (DRY)	120 - 277 Volts Line Voltage (UNV)	Specify Length in Feet & Inches Example: 7'8"
	2200K (22K)	3500K (35K)	3 Watts: 345 Lumens / ft* <sup>2</sup> (3W)	3 Watts: 345 Lumens / ft* <sup>2</sup> (3W)				
	2400K (24K)	4000K (40K)	4 Watts: 460 Lumens / ft* <sup>2</sup> (4W)	4 Watts: 460 Lumens / ft* <sup>2</sup> (4W)				
	2700K (27K)	4500K (45K)	6 Watts: 690 Lumens / ft* <sup>2</sup> (6W)	6 Watts: 690 Lumens / ft* <sup>2</sup> (6W)	0-10V: 100% - 1% (10V)	Outdoor (DAMP)		
	5000K (50K)	8 Watts: 920 Lumens / ft* <sup>2</sup> (8W)	8 Watts: 920 Lumens / ft* <sup>2</sup> (8W)	8 Watts: 920 Lumens / ft* <sup>2</sup> (8W)				
	5500K (55K)	10 Watts: 1150 Lumens / ft* <sup>2</sup> (10W)	10 Watts: 1150 Lumens / ft* <sup>2</sup> (10W)	10 Watts: 1150 Lumens / ft* <sup>2</sup> (10W)	DMX-512* <sup>4</sup> (DMX)			
	6000K (60K)	14 Watts: 1610 Lumens / ft* <sup>2</sup> (14W)	14 Watts: 1610 Lumens / ft* <sup>2</sup> (14W)	14 Watts: 1610 Lumens / ft* <sup>2</sup> (14W)				
6500K (65K)	No Light Source (NLS)	No Light Source (NLS)	No Light Source (NLS)					

<sup>1</sup> Select Watts per Foot for one or both light sources. If no light source will be used, select No Light Source (NLS).  
<sup>2</sup> Lumens per Foot represents individual light source. To calculate total Lumens per Foot, combine Lumens for Light Sources A + B.  
**Example:** A @ 2W / 230 + B @ 6W / 690 = 920 Lumens per Foot.  
<sup>3</sup> Default DMX address of each fixture is 001. Consult third party DMX commissioner to modify at time of installation. ALUZ does not provide DMX commissioning.  
<sup>4</sup> Remote drivers wattage sized based on length of run. **Example:** 10' run x 6 watts per foot = 60 watts. Driver will be sized to 60 watts maximum.

### LAMP FEATURES

<b>Lamp Type</b>	High Output LEDs (No Mercury)
<b>CRI</b>	> 92
<b>Efficacy (Based on 35K CCT LED)</b>	115 Lumens per Watt

Note: Lumens per Watt based on combination of Light Sources A + B.

### LAMP SPECIFICATIONS

Gamut Range	Description	L70 LED Life
<b>20K - 35K</b>	Dynamic White: 2000 Kelvin - 3500 Kelvin	60,000 hours
<b>27K - 65K</b>	Dynamic White: 2700 Kelvin - 6500 Kelvin	

### DRIVERS

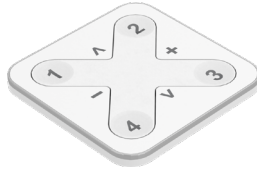
Dimming Selection	Product Code	Link to Specification Sheet / URL
DALI	(DALI)	
0-10V: 100% - 1%	(10V)	
DMX-512	(DMX)	

### DYNAMIC WHITE CONTROLS (Sold Separately)



10V Control Switch  
(CTRL-DWH-10V)

Part #	Qty.
CTRL-DWH-10V	



Bluetooth Wireless Control Panel  
(CTRL-DWH-BT)

Part #	Qty.
CTRL-DWH-BT	



DMX Touch Panel  
(CTRL-DWH-DMX)

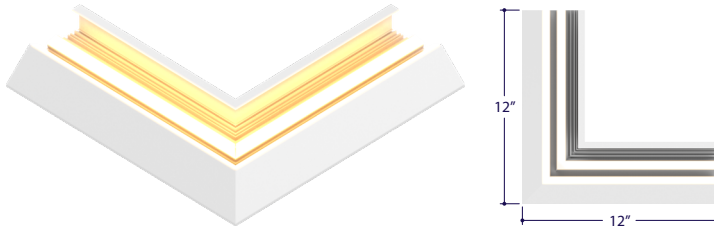
Part #	Qty.
CTRL-DWH-DMX	



DALI Touch Panel  
(CTRL-DWH-DALI)

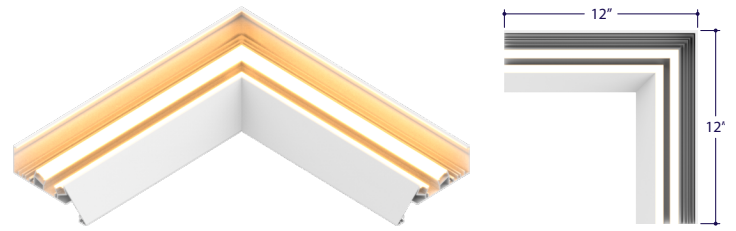
Part #	Qty.
CTRL-DWH-DALI	

### ILLUMINATED CORNERS (Sold Separately)



Series	CCT Gamut		Watts Per Foot (Light Source A)	Watts Per Foot (Light Source B)	Control Interface	Listing	Luminaire Voltage
	Low CCT	High CCT					
A2-ZELO-KNF-DWH-90D-IN							UNV

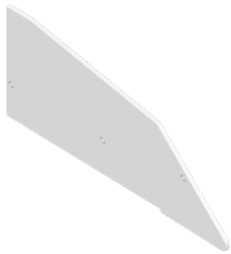
**Note:** Specify product code to match specified code from page 1.  
Click on image to see cut sheet for additional details.



Series	CCT Gamut		Watts Per Foot (Light Source A)	Watts Per Foot (Light Source B)	Control Interface	Listing	Luminaire Voltage
	Low CCT	High CCT					
A2-ZELO-KNF-DWH-90D-EX							UNV

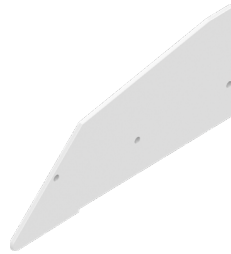
**Note:** Specify product code to match specified code from page 1.  
Click on image to see cut sheet for additional details.

### END CAPS (Sold Separately)



Left End Cap  
(A2-ZELO-KNF-ECL-WH)

Part #	Qty.
A2-ZELO-KNF-ECL-WH	

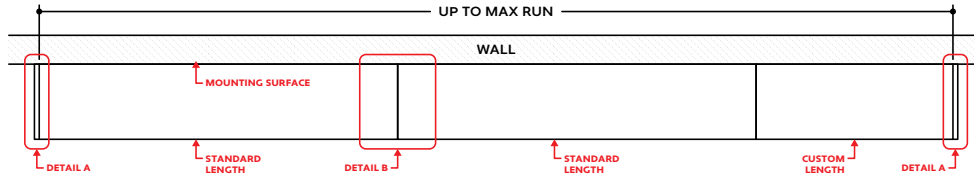


Right End Cap  
(A2-ZELO-KNF-ECR-WH)

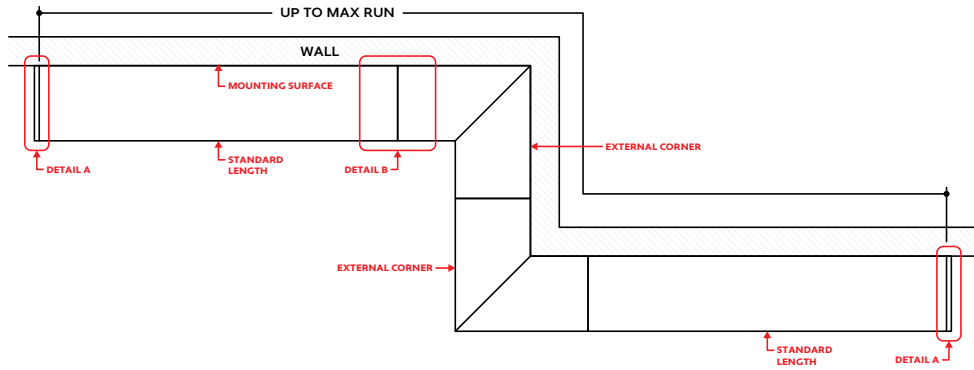
Part #	Qty.
A2-ZELO-KNF-ECR-WH	

### DESIGN GUIDELINES

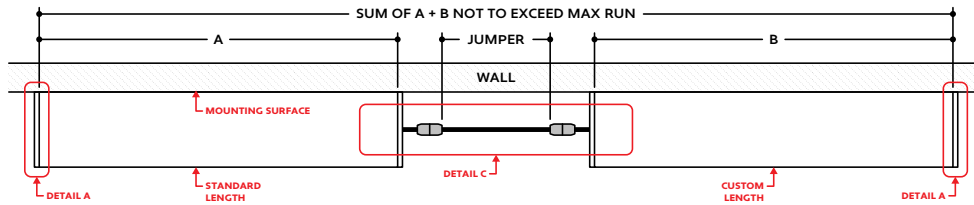
#### Individual Run



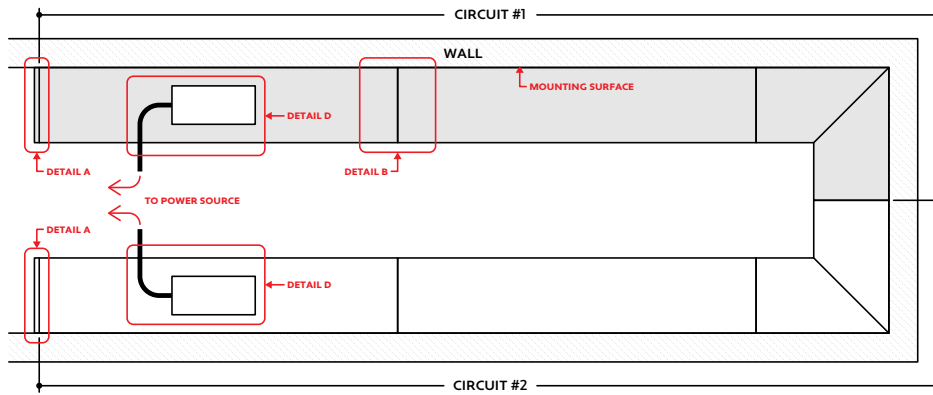
#### Run with Mitered Corners



#### Run with Jumper Cables



#### Continuous Run Exceeding Maximum Run



### KEY

- Detail A End Cap:** An end cap is used to terminate each run at either end.
- Detail B Continuous Connection:** Luminaire segments are connected using an included continuous connector. See installation instructions for details.
- Detail C Continuous Connector (Jumper):** Used to span a corner or traverse a gap, corner, or obstacle in the installation area.
- Detail D Driver:** The driver may be mounted within the luminaire. See installation instructions for details.

**Note:** Drawings not to scale. Product may differ from examples shown.