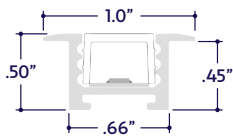


### END VIEW / DIMENSIONS



### MOUNTING OPTIONS

- Channel Only
- Dry Mounting Clip
- Wet Mounting Clip
- Magnetic Mounting Clip

### GENERAL FEATURES

<b>Applications</b>	Accent, Decorative, Surface, Recessed, Pendant Lighting
<b>Lens</b>	Clear, 50% Semi-Frosted, or 100% Frosted
<b>Viewing Angle</b>	120°
<b>Length</b>	Built to Order (+/- 1/8" Tolerance)
<b>Construction</b>	Aluminum Extrusion
<b>Field Cutting</b>	Dry Location Field Cuttable
<b>Weight</b>	0.261 lbs per foot
<b>Mounting</b>	Mounting Channel
<b>Listing</b>	Dry, Wet, or IP67 Location UL2108, 67.1.9, 60.4, CSA C22.2 #9 UL8750, CSA250
<b>Driver</b>	Remote (Sold Separately)
<b>Closet Rating</b>	Up to 3.6 Watts per Foot Maximum
<b>Temperature Ratings</b>	Operating / Startup: -20° to 48°C (-4° to 120°F) Storage: -40° to 76°C (-40° to 170°F)

### ELECTRICAL

<b>Dimming</b>	0-10V, Forward / Reverse Phase, Lutron, DMX, DALI
<b>Maximum Run (Class 1 Applications)</b>	20' (6W), 30' (4W), 36' (3W, 2W)
<b>Maximum Run (Class 2 Applications)</b>	14' (6W), 21' (4W), 28' (3W), 36' (2W)
<b>Luminaire Voltage</b>	24VDC

### SPECIFY PRODUCT CODE | CHOOSE FROM DROP DOWNS

Series	Lens	Watts per Foot	Dimming	CCT LED	Listing	Finish	Luminaire Length
<b>A2-ZOHE-RCD</b>							
ZOHE Recessed (A2-ZOHE-RCD)	Clear Lens (CL)	2 Watts (2W) 216 Lumens / ft*	0-10V: 100% - 1% (10V) Phase Dimming: Forward Phase / Reverse Phase (PH)	2400K (24K) 2700K (27K) 3000K (30K) 3500K (35K)	Indoor (DRY) Outdoor* (WET)	Natural Silver* <sup>7</sup> (NA) Polished (PA) White (WH)	Specify Length in Feet & Inches Example: 7'8"
	50% Semi-Frosted Lens (SF)	3 Watts (3W) 324 Lumens / ft*	Hi-Lume 1% 3 Wire* <sup>2</sup> (L3DA)	4000K (40K) 4500K (45K) 5000K (50K) 5700K (57K)	Outdoor IP67* (IP67)	Satin / Silver (SA) Black (BK)	
	100% Frosted Lens: Line of Light (F)	4 Watts (4W) 432 Lumens / ft*  6 Watts (6W) 648 Lumens / ft*	Hi-Lume Premier 0.1% JA8* <sup>3</sup> (L3D0)	5000K (50K)	Outdoor IP67* (IP67)	Satin / Silver (SA) Black (BK)	
			DMX-512* (DMX)	5700K (57K)			
			DALI* (DALI) JA8 0-10V (JA8-10V)	Red (R) Green (G) Blue (B) Amber (A)			
<b>Leave Blank for Non-Dimming</b>							

**Note:** Remote drivers wattage sized based on length of run. **Example:** 10' run x 3 watts per foot = 30 watts. Driver will be sized to 30 watts maximum.

- \* Lumens per Foot based on 35K CCT LED. **Example:** 108 Lumens x 2 Watts = 216 Lumens per Foot.
- \*\* (L3DA) 40 watt max Hi-Lume 1% L3DA3W #L3DA4UIUKL-CV240
- \*\* (L3D0) 96 watt max Hi-Lume Premier 0.1% #L3D0-96W24V-U
- \*\* Default DMX address of each fixture is 001. Consult third party DMX commissioner to modify at time of installation.
- \*\* DALI commissioning to be performed by a third party at time of installation. ALUZ does not provide DALI commissioning.
- \*\* Run lengths required for Wet Location and IP67 products. Provide run lengths at time of order.
- \*\* Standard Finish is Natural Silver (NA) if left blank.

### LAMP FEATURES

Lamp Type	LEDs
CRI	> 90
Efficacy*	108 Lumens per Watt

Note: Efficacy is based on 35K CCT LED (35K).

### LAMP SPECIFICATIONS

Lamp Number	Correlated Color Temperature / Description	Efficacy (Lumens per Watt)	L70 LED Life
24K	2400 Kelvin (Incandescent White)	104	
27K	2700 Kelvin (Warm White)	103	
30K	3000 Kelvin (Warm White)	105	
35K	3500 Kelvin (Neutral White)	108	60,000 hrs.
40K	4000 Kelvin (Neutral White)	109	
45K	4500 Kelvin (Neutral White)	113	
50K	5000 Kelvin (Cool White)	114	
57K	5700 Kelvin (Cool White)	114	
R	Red (621nm)		
G	Green (525nm)		40,000 hrs.
B	Blue (470nm)		
A	Amber (590nm)		

To calculate Lumens per Foot, multiply Efficacy by Watts per Foot.  
**Example:** 108 Lumens per Watt x 2 Watts per Foot = 216 Lumens per Foot.

### LENS / OPTICS APPEARANCE



Clear Lens (CL)  
Visible Diode Image  
0% Light Loss



50% Semi-Frosted Lens (SF)  
Slight Diode Image  
12.5% Light Loss

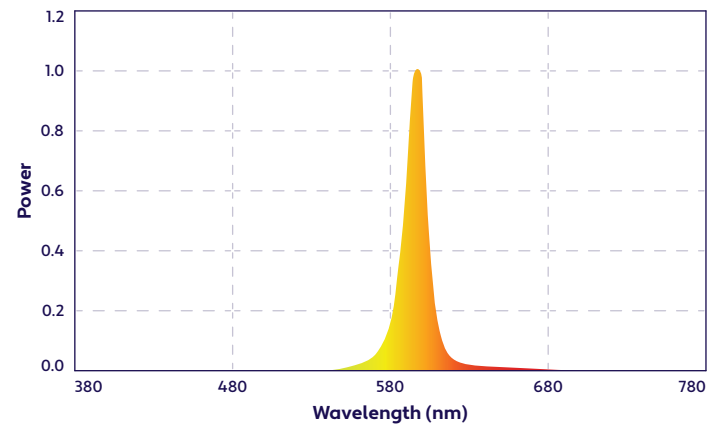


100% Frosted Lens (F)  
No Diode Image: Line of Light  
25% Light Loss

### BEAM ANGLE

120° x 120° Beam

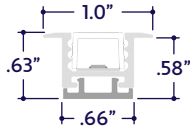
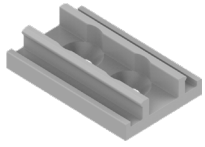
### SPECTRAL POWER DISTRIBUTION AMBER LED (590nm) TURTLE FRIENDLY



### DRIVERS

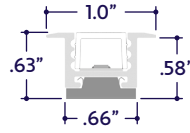
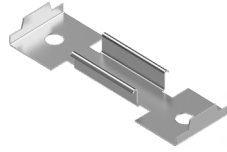
Dimming Selection	Product Code	Link to Specification Sheet / URL
Phase Dimming: Forward Phase / Reverse Phase	(PH)	
0-10V: 100% - 1%	(10V)	
Hi-Lume 1% 3 Wire	(L3DA)	
Hi-Lume Premier 0.1% JA8	(L3D0)	
JA8 0-10V	(JA8-10V)	
DMX-512	(DMX)	
DALI	(DALI)	

### MOUNTING CLIPS (Sold Separately)



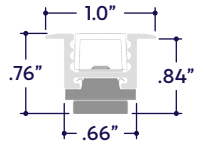
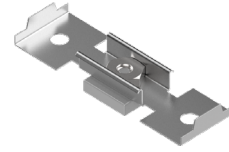
Part #	Qty.
A2-ZOHE-RCD-MC-DRY	

**Note:** Use 1 mounting clip per 2', rounded up.  
Click on image to see cut sheet for additional details.



Part #	Qty.
A2-ZOHE-RCD-MC-WET	

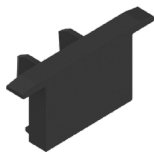
**Note:** Use 1 mounting clip per 2', rounded up.  
Click on image to see cut sheet for additional details.



Part #	Qty.
A2-ZOHE-RCD-MC-MM	

**Note:** Use 1 mounting clip per 2', rounded up.  
Click on image to see cut sheet for additional details.

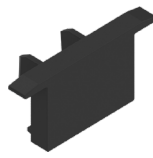
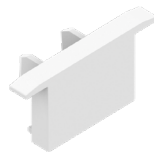
### END CAPS (Sold Separately)



End Cap  
(A2-ZOHE-RCD-EC-X)  
X = Specify Finish: White (WH) or Black (BK)

Part #	Qty.
A2-ZOHE-RCD-EC-WH	
A2-ZOHE-RCD-EC-BK	

**Note:** Default Finish is Black (BK) if unspecified.



End Cap with Exit Hole  
(A2-ZOHE-RCD-EC-H-X)  
X = Specify Finish: White (WH) or Black (BK)

Part #	Qty.
A2-ZOHE-RCD-EC-H-WH	
A2-ZOHE-RCD-EC-H-BK	

**Note:** Default Finish is Black (BK) if unspecified.

### DRY CONNECTORS (Sold Separately)

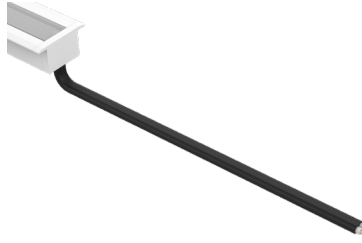
**Note:** Connectors are factory assembled to each run length. Connectors are subject to change without notice.



Dry Power Connector  
(20/2 Gauge Wire)  
**(A2-ZOHE-RCD-PC-BFF-DRY-X)**  
X = Specify Length, 36" Default, 25' Maximum

Part #	Length	Qty.
A2-ZOHE-RCD-PC-BFF-DRY-	36"	
A2-ZOHE-RCD-PC-BFF-DRY-		

**Note:** Specify 1 Power Connector for each lead required. Power Connectors are factory assembled to each length.



Dry Power Connector with Black Jacket  
(20/2 Gauge Wire)  
**(A2-ZOHE-RCD-PC-BFF-DRY-BK-X)**  
X = Specify Length, 36" Default, 25' Maximum

Part #	Length	Qty.
A2-ZOHE-RCD-PC-BFF-DRY-BK-	36"	
A2-ZOHE-RCD-PC-BFF-DRY-BK-		

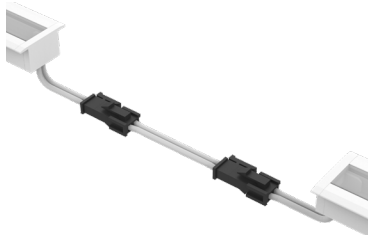
**Note:** Specify 1 Power Connector for each lead required. Power Connectors are factory assembled to each length.



Dry Power Connector with White Jacket  
(20/2 Gauge Wire)  
**(A2-ZOHE-RCD-PC-BFF-DRY-WH-X)**  
X = Specify Length, 36" Default, 25' Maximum

Part #	Length	Qty.
A2-ZOHE-RCD-PC-BFF-DRY-WH-	36"	
A2-ZOHE-RCD-PC-BFF-DRY-WH-		

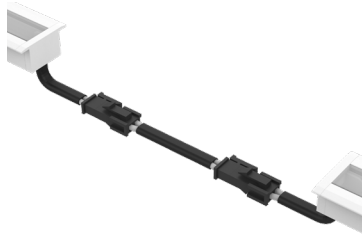
**Note:** Specify 1 Power Connector for each lead required. Power Connectors are factory assembled to each length.



Dry Continuous Connector  
(20/2 Gauge Wire)  
**(A2-ZOHE-RCD-CC-BFF-DRY-X)**  
X = Specify Length, 3" Default

Part #	Length	Qty.
A2-ZOHE-RCD-CC-BFF-DRY-	3"	
A2-ZOHE-RCD-CC-BFF-DRY-		

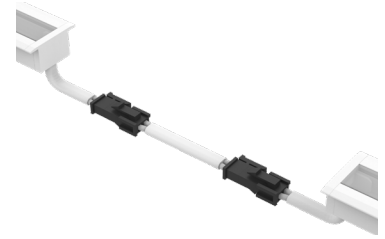
**Note:** Specify Continuous Connectors to traverse a gap or obstacle. Continuous Connectors are factory assembled to specified lengths.



Dry Continuous Connector with Black Jacket  
(20/2 Gauge Wire)  
**(A2-ZOHE-RCD-CC-BFF-DRY-BK-X)**  
X = Specify Length, 3" Default

Part #	Length	Qty.
A2-ZOHE-RCD-CC-BFF-DRY-BK-	3"	
A2-ZOHE-RCD-CC-BFF-DRY-BK-		

**Note:** Specify Continuous Connectors to traverse a gap or obstacle. Continuous Connectors are factory assembled to specified lengths.



Dry Continuous Connector with White Jacket  
(20/2 Gauge Wire)  
**(A2-ZOHE-RCD-CC-BFF-DRY-WH-X)**  
X = Specify Length, 3" Default

Part #	Length	Qty.
A2-ZOHE-RCD-CC-BFF-DRY-WH-	3"	
A2-ZOHE-RCD-CC-BFF-DRY-WH-		

**Note:** Specify Continuous Connectors to traverse a gap or obstacle. Continuous Connectors are factory assembled to specified lengths.

### WET CONNECTORS (Sold Separately)

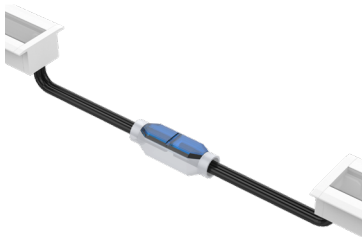
**Note:** Connectors are factory assembled to each run length. Connectors are subject to change without notice.



Wet Power Connector  
(20/2 Gauge Wire)  
**(A2-ZOHE-RCD-PC-BFF-WET-X)**  
X = Specify Length, 36" Default, 25' Maximum

Part #	Length	Qty.
A2-ZOHE-RCD-PC-BFF-WET-	36"	
A2-ZOHE-RCD-PC-BFF-WET-		

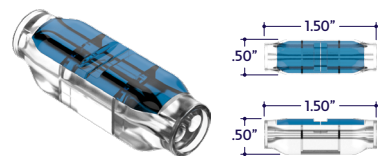
**Note:** Specify 1 Power Connector for each lead required. Power Connectors are factory assembled to each length.



Wet Continuous Connector  
(20/2 Gauge Wire)  
**(A2-ZOHE-RCD-CC-BFF-WET-X)**  
X = Specify Length, 3" Default

Part #	Length	Qty.
A2-ZOHE-RCD-CC-BFF-WET-	3"	
A2-ZOHE-RCD-CC-BFF-WET-		

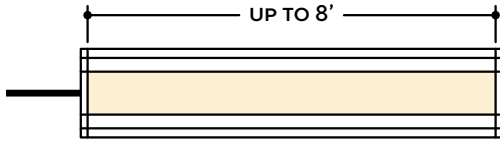
**Note:** Specify Continuous Connectors to traverse a gap or obstacle. Continuous Connectors are factory assembled to specified lengths.



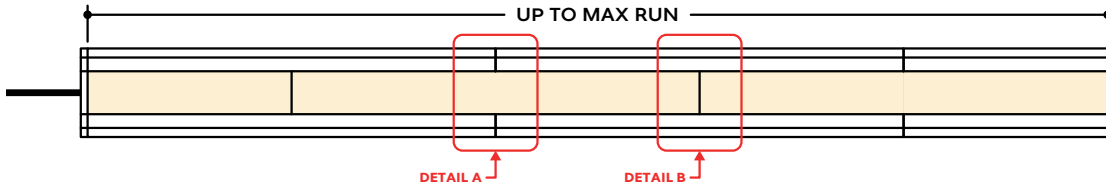
Part #	Qty.
A2-SC-2P-WET	

## DESIGN GUIDELINES

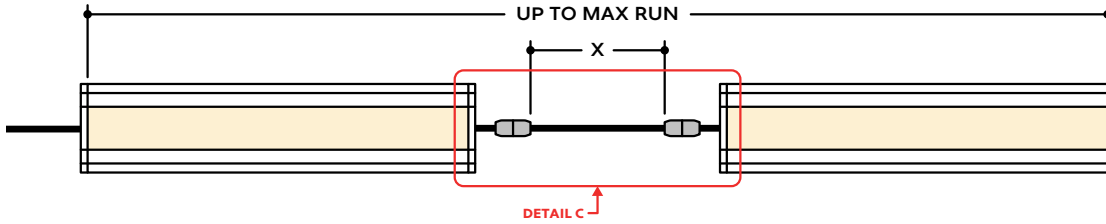
### Individual Fixture



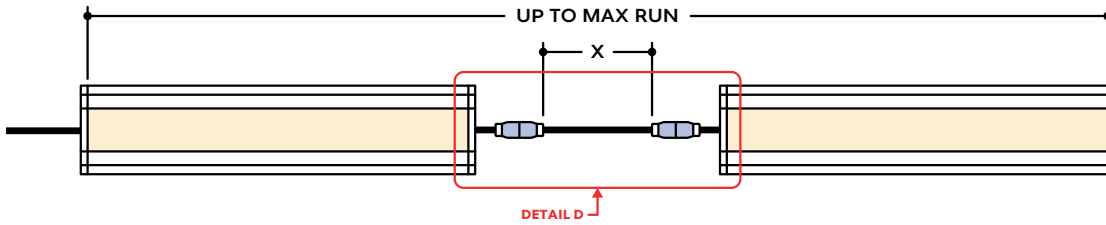
### Continuous Run (Dry or Wet Location)



### Runs with Continuous Connector (Dry Location)



### Runs with Continuous Connector (Wet Location)



## KEY

- Detail A Two Extrusions Meet:** Two extrusion segments meet, held together by a mounting clip. Refer to installation instructions for additional details.
- Detail B Two Lenses Meet:** Lenses are staggered so that the lens always overlaps where two extrusion segments meet. Refer to installation instructions for additional details.
- Detail C Dry Continuous Connector:** Used to span a corner or traverse a gap, corner, or obstacle in a dry location installation area.
- Detail D Wet Continuous Connector:** Used to span a corner or traverse a gap, corner, or obstacle in a wet location installation area.

Note: Drawings not to scale. Product may differ from examples shown.