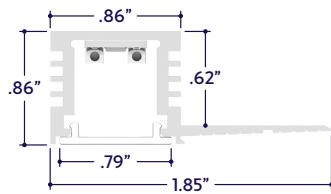
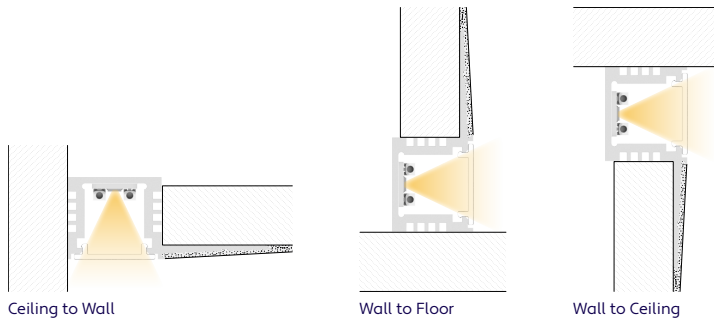


END VIEWS / DIMENSIONS



MOUNTING OPTIONS



SPECIFY PRODUCT CODE | CHOOSE FROM DROP DOWNS

Series	Lens	Watts per Foot	Dimming	CCT LED	Listing	Finish	Luminaire Length
A2-ZUVU-FPF							WH
ZUVU Flush Perimeter Floor (A2-ZUVU-FPF)	50% Semi-Frosted Lens (SF)	2 Watts (2W) 216 Lumens / ft*	0-10V: 100% - 1% (10V) Phase Dimming: Forward Phase / Reverse Phase (PH)	2400K (24K) 2700K (27K) 3000K (30K)	Indoor (DRY)	White (WH)	Specify Length in Feet & Inches Example: 7'8"
	100% Frosted Lens: Line of Light (F)	3 Watts (3W) 324 Lumens / ft*	Hi-Lume 1% 3 Wire* (L3DA)	3500K (35K)	Outdoor (DAMP)		
	Asymmetric Lens (ASM)	4 Watts (4W) 432 Lumens / ft*	Hi-Lume Premier 0.1% JA8* (L3D0) DMX-512* (DMX)	4000K (40K) 4500K (45K)	Outdoor* (WET)		
	15° Optics (15D)	6 Watts (6W) 648 Lumens / ft*	DALI* (DALI)	5000K (50K)			
	30° Optics (30D)		JA8 0-10V (JA8-10V)	5700K (57K)			
	45° Optics (45D)		Leave Blank for Non-Dimming	Red (R)			
	60° Optics (60D)			Green (G) Blue (B) Amber (A)			

Note: Remote drivers wattage sized based on length of run.

Example: 10' run x 3 watts per foot = 30 watts. Driver will be sized to 30 watts maximum.

* Lumens per Foot based on 35K CCT LED. **Example:** 108 Lumens x 2 Watts = 216 Lumens per Foot.

* (L3DA) 40 watt max Hi-Lume 1% L3DA3W #L3DA4U1UKL-CV240

* (L3D0) 96 watt max Hi-Lume Premier 0.1% L3D0-96W24V-U

* Default DMX address of each fixture is 001.

Consult third party DMX commissioner to modify at time of installation.

* DALI commissioning to be performed by a third party at time of installation. ALUZ does not provide DALI commissioning.

* Run lengths required for Wet Location and IP67 products. Provide run lengths at time of order.



GENERAL FEATURES

Applications Mud-In, Accent, Decorative, Surface, Recessed Lighting

Lens 50% Semi-Frosted or 100% Frosted

Optics & Asymmetric Lens 15°, 30°, 45°, 60°, 120°, and Asymmetric Optics

Length Built to Order (Shipped in assembled 8' segments)

Construction Aluminum Extrusion

Field Cutting Dry and Damp Location Field Cuttable

Weight 1.5 lbs per foot

Mounting Mud-In

Listing Dry, Damp, or Wet Location
UL2108, 67.1.9, 60.4, CSA C22.2 #9
UL8750, CSA250

Driver Remote (Sold Separately)

Closet Rating Up to 3.6 Watts per Foot Maximum

Temperature Ratings Operating / Startup: -20° to 48°C (-4° to 120°F)
Storage: -40° to 76°C (-40° to 170°F)

Installation Link

ELECTRICAL

Dimming 0-10V, Forward / Reverse Phase, Lutron, DMX, DALI

Maximum Run (Class 1 Applications) 20' (6W), 30' (4W), 36' (3W, 2W)

Maximum Run (Class 2 Applications) 14' (6W), 21' (4W), 28' (3W), 36' (2W)

Luminaire Voltage 24VDC



A2 Series | Recessed ZUVU Flush Perimeter Floor (A2-ZUVU-FPF)

TYPE

LAMP FEATURES

Lamp Type	LEDs (No Mercury)
CRI	> 90
Efficacy (Based on 35K CCT LED)	108 Lumens per Watt

LAMP SPECIFICATIONS

Lamp Number	Correlated Color Temperature / Description	Efficacy (Lumens per Watt)	L70 LED Life
24K	2400 Kelvin (Incandescent White)	108	60,000 hrs.
27K	2700 Kelvin (Warm White)	108	
30K	3000 Kelvin (Warm White)	108	
35K	3500 Kelvin (Neutral White)	108	
40K	4000 Kelvin (Neutral White)	108	
45K	4500 Kelvin (Neutral White)	108	40,000 hrs.
50K	5000 Kelvin (Cool White)	108	
57K	5700 Kelvin (Cool White)	108	
R	Red (621nm)		
G	Green (525nm)		
B	Blue (470nm)		
A	Amber (590nm)		

To calculate Lumens per Foot, multiply Efficacy by Watts per Foot.
Example: 108 Lumens per Watt x 2 Watts per Foot = 216 Lumens per Foot.

LENS / OPTICS APPEARANCE



50% Semi-Frosted Lens (SF)
Slight Diode Image
12.5% Loss Factor



100% Frosted Lens (F)
No Diode Image: Line of Light
25% Loss Factor



Asymmetric Lens (ASM)
Slight Diode Image
18% Loss Factor

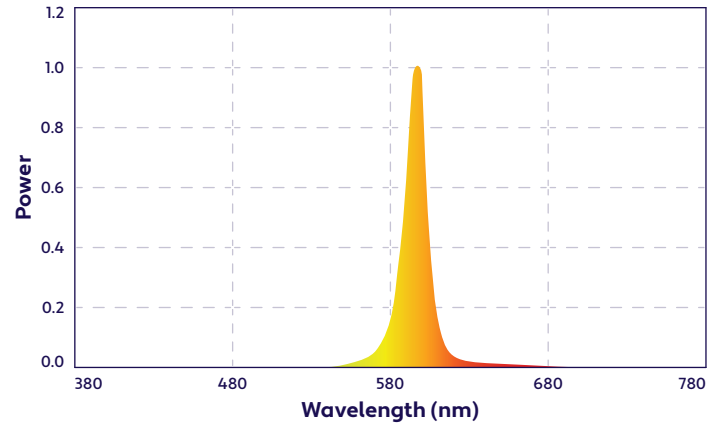


Optic Lens (15D, 30D, 45D, 60D)
Slight Diode Image
18% Loss Factor

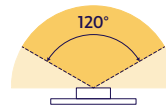
DRIVERS

Dimming Selection	Product Code	Link to Specification Sheet / URL
Phase Dimming: Forward Phase / Reverse Phase	(PH)	
0-10V: 100% - 1%	(10V)	
Hi-Lume 1% 3 Wire	(L3DA)	
Hi-Lume Premier 0.1% JA8	(L3D0)	
JA8 0-10V	(JA8-10V)	
DMX-512	(DMX)	
DALI	(DALI)	

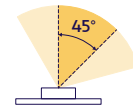
SPECTRAL POWER DISTRIBUTION AMBER LED (590nm) TURTLE FRIENDLY



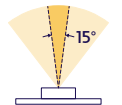
BEAM ANGLES



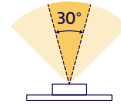
120° x 120° Beam
50% Semi-Frosted Lens (SF)
100% Frosted Lens (F)



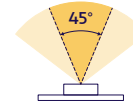
45° x 60° Beam
Asymmetric Lens
(ASM)



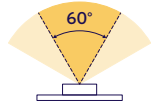
15° x 60° Beam
Optic Lens
(15D)



30° x 60° Beam
Optic Lens
(30D)

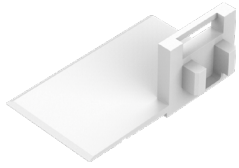


45° x 60° Beam
Optic Lens
(45D)



60° x 60° Beam
Optic Lens
(60D)

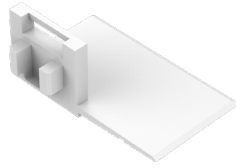
END CAPS (Sold Separately)



Left End Cap
(A2-ZUVU-FPF-ECL)

Part #	Qty.
A2-ZUVU-FPF-ECL	

Note: Use 1 Left End Cap for each termination on the left side.



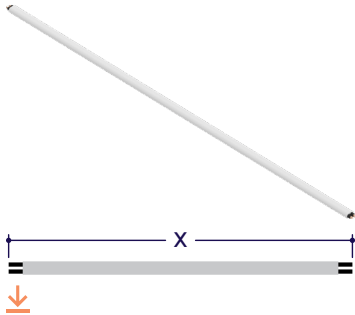
Right End Cap
(A2-ZUVU-FPF-ECR)

Part #	Qty.
A2-ZUVU-FPF-ECR	

Note: Use 1 Right End Cap for each termination on the right side.

DRY CONNECTORS (Sold Separately)

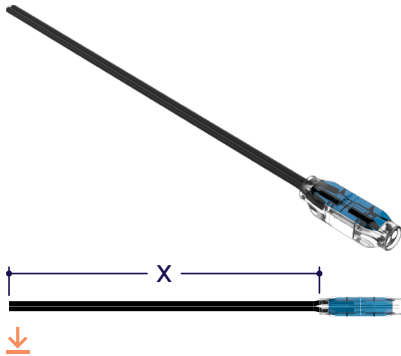
Note: Connector style subject to change without notice. Refer to cut sheet or installation instructions for wiring colors.



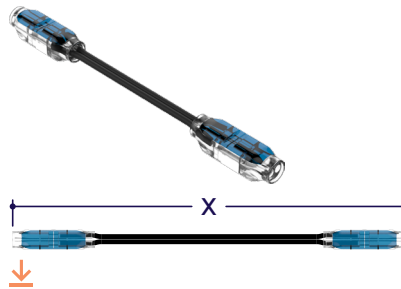
Part #	Length	Qty.
A2-PC-2P-PLM-DRY-	36"	
A2-PC-2P-PLM-DRY-		

WET CONNECTORS (Sold Separately)

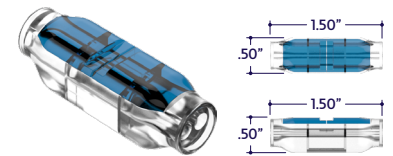
Note: Connector style subject to change without notice. Refer to cut sheet or installation instructions for wiring colors.



Part #	Length	Qty.
A2-PC-2P-WET-	36"	
A2-PC-2P-WET-		

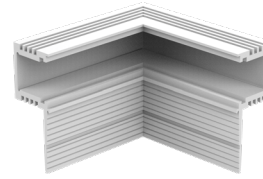


Part #	Length	Qty.
A2-CC-2P-WET-	3"	
A2-CC-2P-WET-		



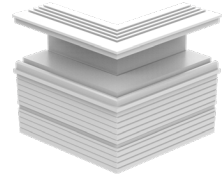
Part #	Qty.
A2-SC-2P-WET	

MITERED CORNERS (Sold Separately)



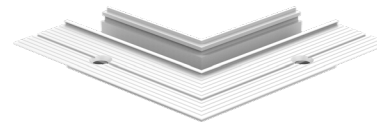
90° Internal Wall Corner
(A2-ZUVU-FPF-90D-INW)

Part #	Qty.
A2-ZUVU-FPF-90D-INW	



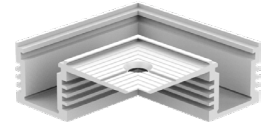
90° External Wall Corner
(A2-ZUVU-FPF-90D-EXW)

Part #	Qty.
A2-ZUVU-FPF-90D-EXW	



90° External Ceiling Corner
(A2-ZUVU-FPF-90D-EXC)

Part #	Qty.
A2-ZUVU-FPF-90D-EXC	

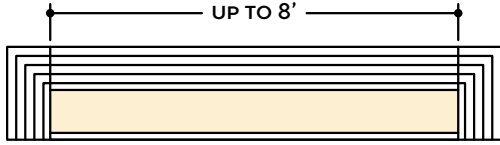


90° Internal Ceiling Corner
(A2-ZUVU-FPF-90D-INC)

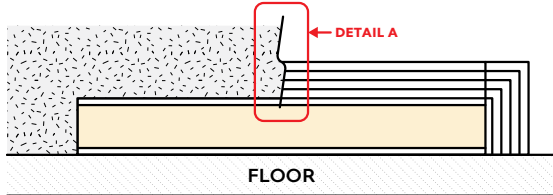
Part #	Qty.
A2-ZUVU-FPF-90D-INC	

DESIGN GUIDELINES

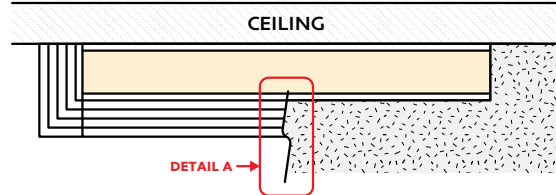
Individual Fixture



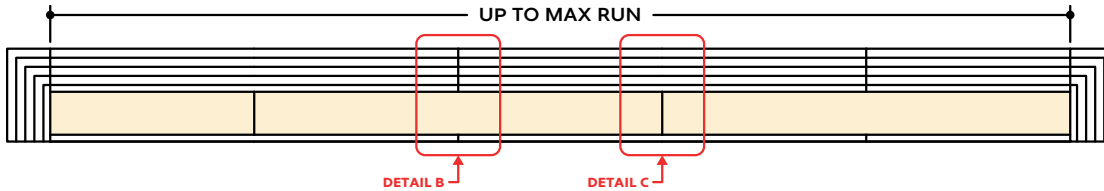
Individual Fixture with Mud-In (Wall to Floor)



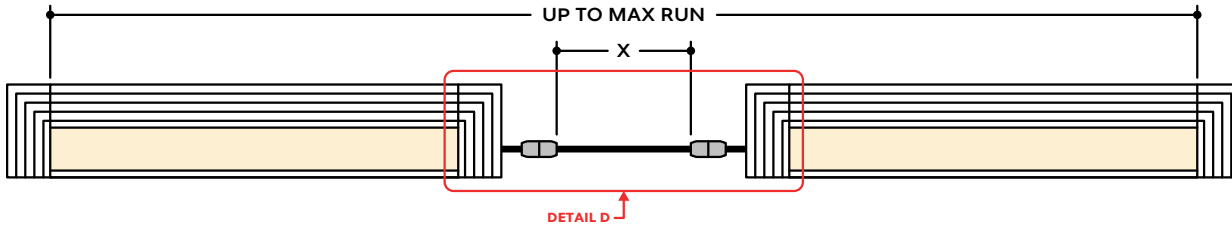
Individual Fixture with Mud-In (Wall to Ceiling)



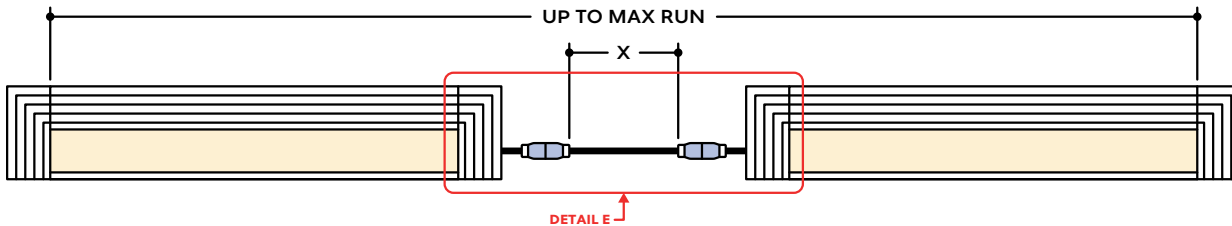
Continuous Run



Runs with Continuous Connector (Dry Location)



Runs with Continuous Connector (Wet Location)



KEY

- Detail A** **Mud-In:** Plaster is used to cover the flanges of the extrusion, leaving a flush appearance. Refer to installation instructions for details.
- Detail B** **Two Extrusions Meet:** Two extrusion segments meet. Refer to installation instructions for additional details.
- Detail C** **Two Lenses Meet:** Lenses are staggered so that the lens always overlaps where two extrusion segments meet. Refer to installation instructions for additional details.
- Detail D** **Dry Continuous Connector:** Used to span a corner or traverse a gap, corner, or obstacle in a dry location installation area.
- Detail E** **Wet Continuous Connector:** Used to span a corner or traverse a gap, corner, or obstacle in a wet location installation area.

Note: Drawings not to scale. Product may differ from examples shown.