

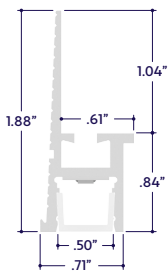
GENERAL FEATURES

Applications	Mud-In, Accent, Decorative, Recessed Lighting
Lens	50% Semi-Frosted or 100% Frosted
Viewing Angle	120°
Length	Built to Order (Shipped in assembled 8' segments)
Construction	Aluminum Extrusion
Field Cutting	Dry and Damp Location Field Cuttable
Weight	0.46 lbs per foot
Mounting	Mud-In
Listing	Dry or Damp Location UL2108, 67.1.9, 60.4, CSA C22.2 #9 UL8750, CSA250
Driver	Remote (Sold Separately)
Closet Rating	Up to 3.6 Watts per Foot Maximum
Temperature Ratings	Operating / Startup: -20° to 48°C (-4° to 120°F) Storage: -40° to 76°C (-40° to 170°F)
Installation Link	

ELECTRICAL

Dimming	0-10V, Forward / Reverse Phase, Lutron, DMX, DALI
Maximum Run (Class 1 Applications)	20' (6W), 30' (4W), 36' (3W, 2W)
Maximum Run (Class 2 Applications)	14' (6W), 21' (4W), 28' (3W), 36' (2W)
Luminaire Voltage	24VDC

END VIEW / DIMENSIONS



SPECIFY PRODUCT CODE | CHOOSE FROM DROP DOWNS

Series	Lens	Watts per Foot	Dimming	CCT LED	Listing	Finish	Luminaire Length
A2-ZUVU-FPI							WH
ZUVU Flush Perimeter Indirect Edge (A2-ZUVU-FPI)	50% Semi-Frosted Lens (SF)	2 Watts (2W) 216 Lumens / ft ^{a1}	0-10V: 100% - 1% (10V) Phase Dimming: Forward Phase / Reverse Phase (PH)	2400K (24K) 2700K (27K) 3000K (30K) 3500K (35K)	Indoor (DRY) Outdoor (DAMP)	White (WH)	Specify Length in Feet & Inches Example: 7'8"
	100% Frosted Lens: Line of Light (F)	3 Watts (3W) 324 Lumens / ft ^{a1}	Hi-Lume 1% 3 Wire* ^{a2} (L3DA)	4000K (40K) 4500K (45K) 5000K (50K) 5700K (57K)			
		4 Watts (4W) 432 Lumens / ft ^{a1}	Hi-Lume Premier 0.1% JA8* ^{a3} (L3D0)				
			DMX-512* ^{a4} (DMX)				
		6 Watts (6W) 648 Lumens / ft ^{a1}	DALI* ^{a5} (DALI)				
			JA8 0-10V (JA8-10V)				
			Leave Blank for Non-Dimming	Red (R) Green (G) Blue (B) Amber (A)			

Note: Remote drivers wattage sized based on length of run. **Example:** 10' run x 3 watts per foot = 30 watts. Driver will be sized to 30 watts maximum.

- ^{a1} Lumens per Foot based on 35K CCT LED. **Example:** 108 Lumens x 2 Watts = 216 Lumens per Foot.
- ^{a2} (L3DA) 40 watt max Hi-Lume 1% L3DA3W #L3DA4U1UKL-CV240
- ^{a3} (L3D0) 96 watt max Hi-Lume Premier 0.1% #L3D0-96W24V-U
- ^{a4} Default DMX address of each fixture is 001. Consult third party DMX commissioner to modify at time of installation.
- ^{a5} DALI commissioning to be performed by a third party at time of installation. ALUZ does not provide DALI commissioning.



A2 Series | Recessed ZUVU Flush Perimeter Indirect Edge (A2-ZUVU-FPI)

TYPE

LAMP FEATURES

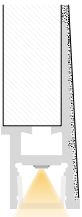
Lamp Type	LEDs (No Mercury)
CRI	> 90
Efficacy (Based on 35K CCT LED)	108 Lumens per Watt

LAMP SPECIFICATIONS

Lamp Number	Correlated Color Temperature / Description	Efficacy (Lumens per Watt)	L70 LED Life
24K	2400 Kelvin (Incandescent White)	108	60,000 hrs.
27K	2700 Kelvin (Warm White)	108	
30K	3000 Kelvin (Warm White)	108	
35K	3500 Kelvin (Neutral White)	108	
40K	4000 Kelvin (Neutral White)	108	
45K	4500 Kelvin (Neutral White)	108	40,000 hrs.
50K	5000 Kelvin (Cool White)	108	
57K	5700 Kelvin (Cool White)	108	
R	Red (621nm)		
G	Green (525nm)		
B	Blue (470nm)		
A	Amber (590nm)		

To calculate Lumens per Foot, multiply Efficacy by Watts per Foot.
Example: 108 Lumens per Watt x 2 Watts per Foot = 216 Lumens per Foot.

MOUNTING OPTION



Mud-In

DRIVERS

Dimming Selection	Product Code	Link to Specification Sheet / URL
Phase Dimming: Forward Phase / Reverse Phase	(PH)	
0-10V: 100% - 1%	(10V)	
Hi-Lume 1% 3 Wire	(L3DA)	
Hi-Lume Premier 0.1% JA8	(L3D0)	
JA8 0-10V	(JA8-10V)	
DMX-512	(DMX)	
DALI	(DALI)	

LENS / OPTICS APPEARANCE

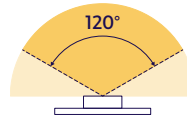


50% Semi-Frosted Lens (SF)
Slight Diode Image
12.5% Loss Factor



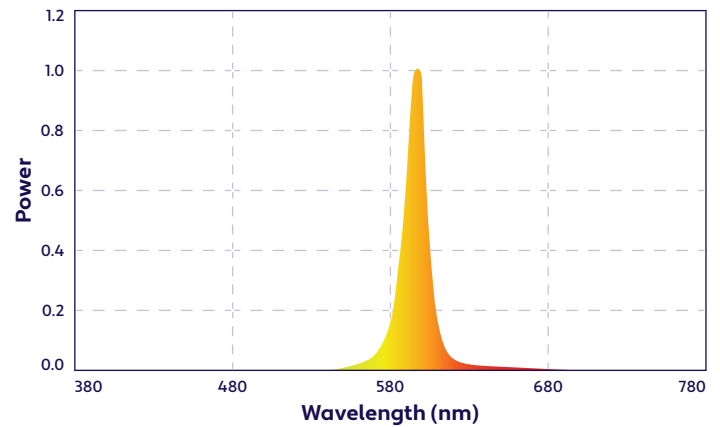
100% Frosted Lens (F)
No Diode Image: Line of Light
25% Loss Factor

BEAM ANGLE

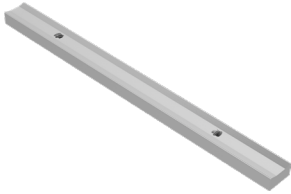


120° x 120° Beam

SPECTRAL POWER DISTRIBUTION AMBER LED (590nm) TURTLE FRIENDLY



MOUNTING ACCESSORIES (Sold Separately)



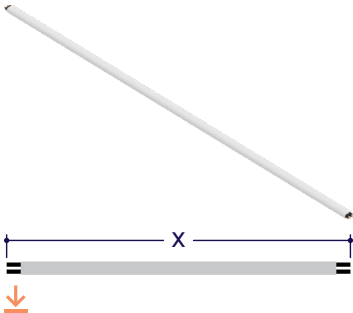
180° Lock Bar
(A2-ZUVU-LB-180D)

Part #	Qty.
A2-ZUVU-LB-180D	

Note: Use 1 Lock Bar for each connection between two fixture segments.

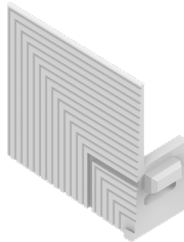
DRY CONNECTORS (Sold Separately)

Note: Connector style subject to change without notice. Refer to cut sheet or installation instructions for wiring colors.



Part #	Length	Qty.
A2-PC-2P-PLM-DRY-	36"	
A2-PC-2P-PLM-DRY-		

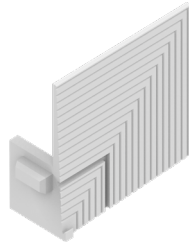
END CAPS (Sold Separately)



Left End Cap
(A2-ZUVU-FPI-ECL)

Part #	Qty.
A2-ZUVU-FPI-ECL	

Note: Use 1 Left End Cap for each termination on the left side.



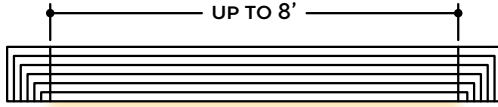
Right End Cap
(A2-ZUVU-FPI-ECR)

Part #	Qty.
A2-ZUVU-FPI-ECR	

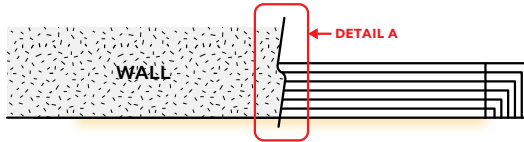
Note: Use 1 Right End Cap for each termination on the right side.

DESIGN GUIDELINES

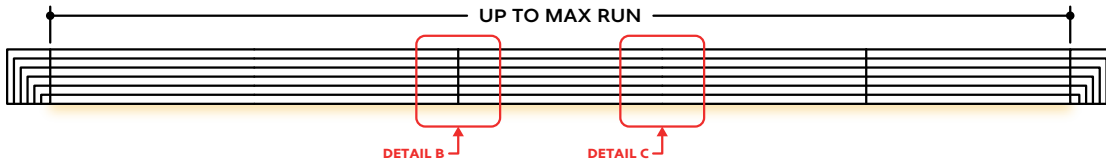
Individual Fixture



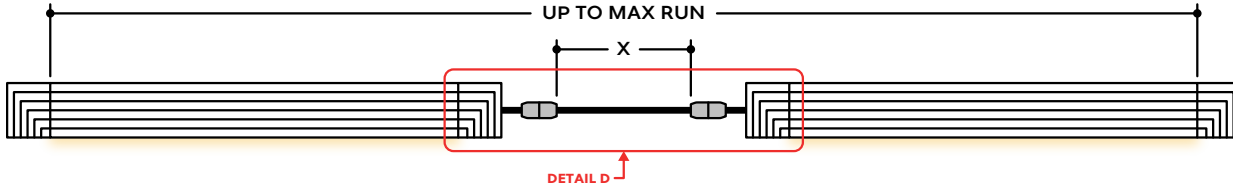
Individual Fixture with Mud-In



Continuous Run



Runs with Continuous Connector (Dry Location)



KEY

- Detail A Mud-In:** Plaster is used to cover the flanges of the extrusion, leaving a flush appearance. Refer to installation instructions for details.
- Detail B Two Extrusions Meet:** Two extrusion segments meet. Refer to installation instructions for additional details.
- Detail C Two Lenses Meet:** Lenses are staggered so that the lens always overlaps where two extrusion segments meet. Refer to installation instructions for additional details.
- Detail D Dry Continuous Connector:** Used to span a corner or traverse a gap, corner, or obstacle in a dry location installation area. For Mud-In applications, the connection is located behind the mounting surface, such as drywall.

Note: Drawings not to scale. Product may differ from examples shown.