

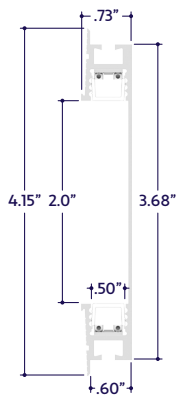
GENERAL FEATURES

Applications Mud-In, Accent, Decorative, Surface, Recessed Lighting**Lens** 50% Semi-Frosted or 100% Frosted**Viewing Angle** 120°**Length** Built to Order (Shipped in assembled 8' segments)**Construction** Aluminum Extrusion**Field Cutting** Dry and Damp Location Field Cuttable**Weight** 0.81 lbs per foot**Mounting** Mud-In**Listing** Dry or Damp Location
UL2108, 67.1.9, 60.4, CSA C22.2 #9
UL8750, CSA250**Driver** Remote (Sold Separately)**Closet Rating** Up to 3.6 Watts per Foot Maximum**Temperature Ratings** Operating / Startup: -20° to 48°C (-4° to 120°F)
Storage: -40° to 76°C (-40° to 170°F)**Installation Link**

ELECTRICAL

Dimming 0-10V, Forward / Reverse Phase, Lutron, DMX, DALI**Maximum Run**
(Class 1 Applications) 20' (12W), 30' (8W), 36' (6W, 4W)**Maximum Run**
(Class 2 Applications) 7' (12W), 10' (8W), 14' (6W), 21' (4W)**Luminaire Voltage** 24VDC

END VIEWS / DIMENSIONS



SPECIFY PRODUCT CODE | CHOOSE FROM DROP DOWNS

Series	Lens	Watts per Foot*2	Dimming	CCT LED	Listing	Finish	Luminaire Length	
A2-ZUVU-FWD							WH	
ZUVU Flush Wall Duo (A2-ZUVU-FWD)	50% Semi-Frosted Lens (SF)	2 + 2 Watts (4W) 432 Lumens / ft*1	0-10V: 100% - 1% (10V)	2400K (24K)	Indoor (DRY)	White (WH)	Specify Length in Feet & Inches Example: 7'8"	
			Phase Dimming: Forward Phase / Reverse Phase (PH)	2700K (27K)				
	100% Frosted Lens: Line of Light (F)	3 + 3 Watts (6W) 648 Lumens / ft*1	Hi-Lume 1% 3 Wire*2 (L3DA)	3000K (30K)	Outdoor (DAMP)			
			Hi-Lume Premier 0.1% JA8*3 (L3D0)	3500K (35K)				
		4 + 4 Watts (8W) 864 Lumens / ft*1	DMX-512*4 (DMX)	4000K (40K)				
			DALI*5 (DALI)	4500K (45K)				
		6 + 6 Watts (12W) 1296 Lumens / ft*1	JA8 0-10V (JA8-10V)	5000K (50K)				
			Leave Blank for Non-Dimming	5700K (57K)				
				Red (R)				
				Green (G)				
				Blue (B)				
				Amber (A)				

Note: Remote drivers wattage sized based on length of run. **Example:** 10' run x 3 watts per foot = 30 watts. Driver will be sized to 30 watts maximum.^{#1} Lumens per Foot based on 35K CCT LED. **Example:** 108 Lumens x 4 Watts = 432 Lumens per Foot.^{#2} Watts per foot based on wattage of top run + wattage of bottom run. **Example:** 2W Top + 2W Bottom = 4 Watts per Foot.^{#3} (L3DA) 40 watt max Hi-Lume 1% L3DA3W #L3DA6UIUKL-CV240^{#4} (L3D0) 96 watt max Hi-Lume Premier 0.1% #L3D0-96W24V-U^{#5} Default DMX address of each fixture is 001. Consult third party DMX commissioner to modify at time of installation.^{#6} DALI commissioning to be performed by a third party at time of installation. ALUZ does not provide DALI commissioning.



A2 Series | Recessed ZUVU Flush Wall Duo (A2-ZUVU-FWD)

TYPE

LAMP FEATURES

Lamp Type	LEDs (No Mercury)
CRI	> 90
Efficacy (Based on 35K CCT LED)	108 Lumens per Watt

LAMP SPECIFICATIONS

Lamp Number	Correlated Color Temperature / Description	Efficacy (Lumens per Watt)	L70 LED Life
24K	2400 Kelvin (Incandescent White)	108	60,000 hrs.
27K	2700 Kelvin (Warm White)	108	
30K	3000 Kelvin (Warm White)	108	
35K	3500 Kelvin (Neutral White)	108	
40K	4000 Kelvin (Neutral White)	108	
45K	4500 Kelvin (Neutral White)	108	40,000 hrs.
50K	5000 Kelvin (Cool White)	108	
57K	5700 Kelvin (Cool White)	108	
R	Red (621nm)		
G	Green (525nm)		
B	Blue (470nm)		
A	Amber (590nm)		

To calculate Lumens per Foot, multiply Efficacy by Watts per Foot.
Example: 108 Lumens per Watt x 2 Watts per Foot = 216 Lumens per Foot.

MOUNTING OPTION



Mud-In

LENS / OPTICS APPEARANCE

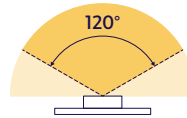


50% Semi-Frosted Lens (SF)
Slight Diode Image
12.5% Loss Factor



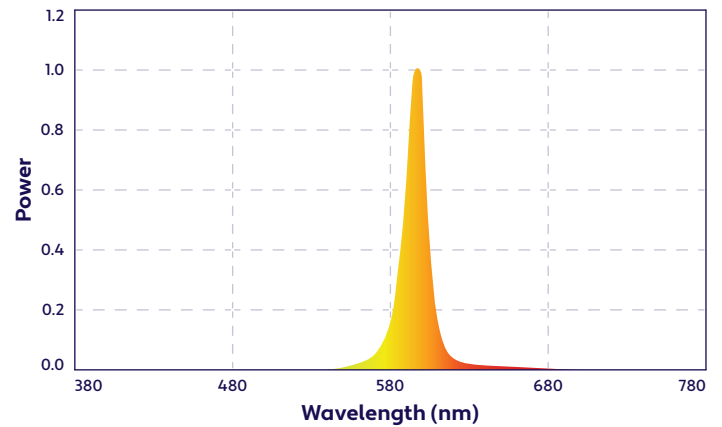
100% Frosted Lens (F)
No Diode Image: Line of Light
25% Loss Factor

BEAM ANGLE



120° x 120° Beam

SPECTRAL POWER DISTRIBUTION AMBER LED (590nm) TURTLE FRIENDLY



DRIVERS

Dimming Selection	Product Code	Link to Specification Sheet / URL
Phase Dimming: Forward Phase / Reverse Phase	(PH)	
0-10V: 100% - 1%	(10V)	
Hi-Lume 1% 3 Wire	(L3DA)	
Hi-Lume Premier 0.1% JA8	(L3D0)	
JA8 0-10V	(JA8-10V)	
DMX-512	(DMX)	
DALI	(DALI)	

1170 N Red Gum St, Anaheim, CA 92806

aluz.lighting info@aluz.lighting [866.ALUZ.LTG](tel:866.ALUZ.LTG) | 714.535.7900

© ALUZ All Rights Reserved. ALUZ reserves the right to make changes or withdraw specifications without prior notice.

Specification Submittal

Page 2 of 4

11 / 27 / 2023 / Rev 12

END CAP (Sold Separately)

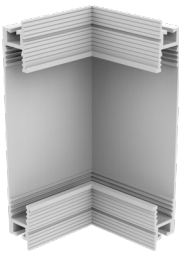


End Cap
(A2-ZUVU-FWD-EC)

Part #	Qty.
A2-ZUVU-FWD-EC	

Note: Use 1 End Cap at the termination of each run.

MITERED CORNERS (Sold Separately)



90° Internal Corner
(A2-ZUVU-FWD-90D-IN)

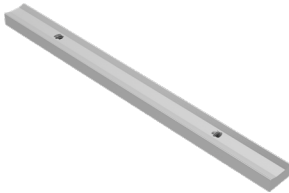
Part #	Qty.
A2-ZUVU-FWD-90D-IN	



90° External Corner
(A2-ZUVU-FWD-90D-EX)

Part #	Qty.
A2-ZUVU-FWD-90D-EX	

MOUNTING ACCESSORIES (Sold Separately)



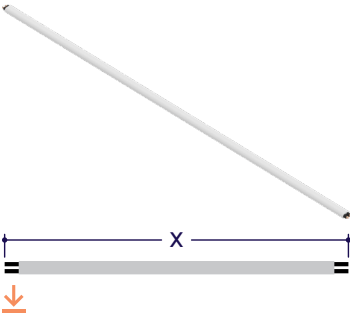
180° Lock Bar
(A2-ZUVU-LB-180D)

Part #	Qty.
A2-ZUVU-LB-180D	

Note: Use 1 Lock Bar for each connection between two fixture segments.

DRY CONNECTORS (Sold Separately)

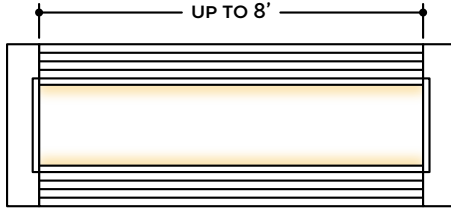
Note: Connector style subject to change without notice. Refer to cut sheet or installation instructions for wiring colors.



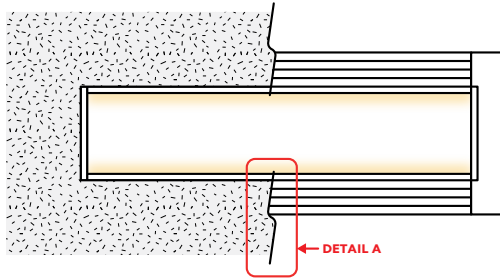
Part #	Length	Qty.
A2-PC-2P-PLM-DRY-	36"	
A2-PC-2P-PLM-DRY-		

DESIGN GUIDELINES

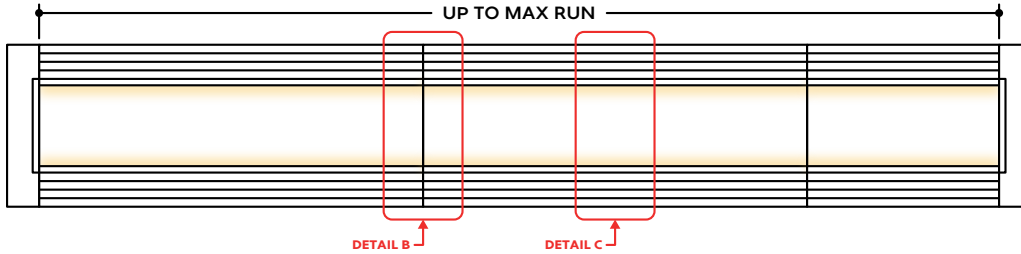
Individual Fixture



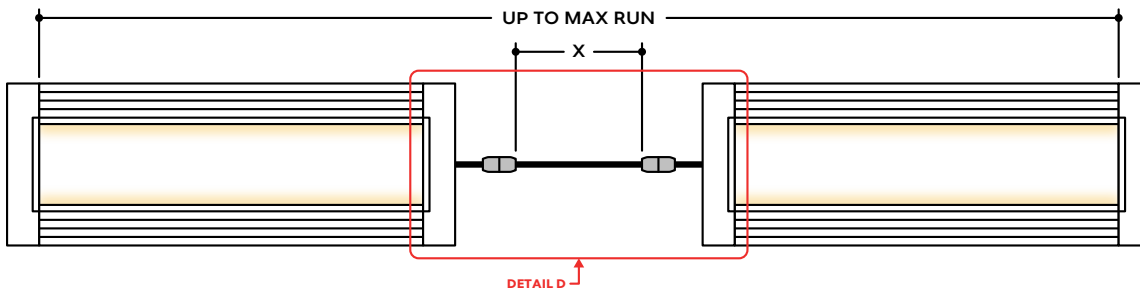
Individual Fixture with Mud-In



Continuous Run



Runs with Continuous Connector



KEY

- Detail A Mud-In:** Plaster is used to cover the flanges of the extrusion, leaving a flush appearance. Refer to installation instructions for details.
- Detail B Two Extrusions Meet:** Two extrusion segments meet. Refer to installation instructions for additional details.
- Detail C Two Lenses Meet:** Lenses are staggered so that the lens always overlaps where two extrusion segments meet. Refer to installation instructions for additional details.
- Detail D Dry Continuous Connector:** Used to span a corner or traverse a gap, corner, or obstacle in a dry location installation area. For Mud-In applications, the connection is located behind the mounting surface, such as drywall.

Note: Drawings not to scale. Product may differ from examples shown.