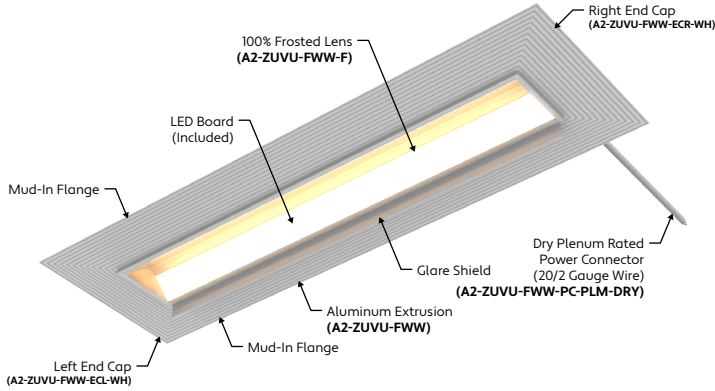


# ALUZ

## A2 Series | Recessed ZUVU Wall Washer (A2-ZUVU-FWW)

TYPE

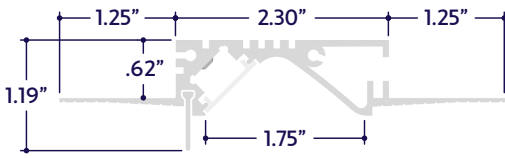


### GENERAL FEATURES

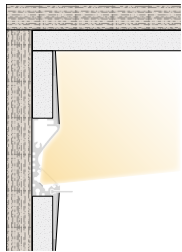
<b>Applications</b>	Wall Washing, Grazer, or Direct View Lighting
<b>Lens</b>	Clear, 50% Semi-Frosted, or 100% Frosted
<b>Optics &amp; Asymmetric</b>	15°, 30°, 45°, 60°, 120°, or Asymmetric Optics
<b>Length</b>	Built to Order (Shipped in assembled 8' segments)
<b>Construction</b>	Aluminum Extrusion
<b>Field Cutting</b>	Dry and Damp Location Field Cuttable
<b>Weight</b>	0.47 lbs per foot
<b>Mounting</b>	Mud-In

<b>Listing</b>	Dry or Damp Location UL1598, CSA C22.2#250.0 UL8750, CSA250 UL2108, 67.1.9, 60.4, CSA C22.2 #9
<b>Driver</b>	Remote (Sold Separately)
<b>Closet Rating</b>	Up to 3.6 Watts per Foot Maximum
<b>Temperature Ratings</b>	Operating / Startup: -20° to 48°C (-4° to 120°F) Storage: -40° to 76°C (-40° to 170°F)
<b>Installation Link</b>	

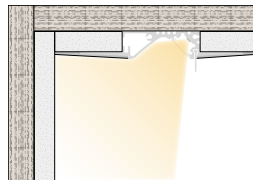
### END VIEW / DIMENSIONS



### MOUNTING OPTIONS



Wall Mounted Wall Wash



Ceiling Mounted Wall Wash

### ELECTRICAL

<b>Dimming</b>	0-10V, Forward / Reverse Phase, Lutron, DMX, DALI
<b>Maximum Run (Class 2 Applications)</b>	36' (1.5W, 2W), 28' (3W), 21' (4W), 17' (5W), 14' (6W), 10' (8W), 7' (12W)
<b>Luminaire Voltage</b>	120V - 277V (UNV)

### SPECIFY PRODUCT CODE | CHOOSE FROM DROP DOWNS

Series	Lens	Watts per Foot	Dimming	CCT LED	Listing	Finish	Luminaire Length
<b>A2-ZUVU-FWW</b>						<b>WH</b>	
ZUVU Flush Wall Washer (A2-ZUVU-FWW)	50% Semi-Frosted Lens (SF)	1.5 Watts: 190 Lumens / ft* <sup>1</sup> (1.5W)	0-10V: 100% - 1% (10V)	2400K (24K)	Indoor (DRY)	White (WH)	Specify Length in Feet & Inches Example: 7'8"
		2 Watts: 254 Lumens / ft* <sup>1</sup> (2W)	Phase Dimming: Forward Phase / Reverse Phase (PH)	2700K (27K)			
	100% Frosted Lens: Line of Light (F)	3 Watts: 381 Lumens / ft* <sup>1</sup> (3W)	Hi-Lume 1% 3 Wire* <sup>2</sup> (L3DA)	3000K (30K)	Outdoor (DAMP)		
		4 Watts: 508 Lumens / ft* <sup>1</sup> (4W)	Hi-Lume Premier 0.1% JA8* <sup>3</sup> (L3D0)	3500K (35K)			
	Asymmetric Lens (ASM)	5 Watts: 635 Lumens / ft* <sup>1</sup> (5W)	DMX-512* <sup>4</sup> (DMX)	4000K (40K)			
		6 Watts: 762 Lumens / ft* <sup>1</sup> (6W)	DALI* <sup>5</sup> (DALI)	4500K (45K)			
	15° Optics (15D)	8 Watts: 1016 Lumens / ft* <sup>1</sup> (8W)	JA8 0-10V (JA8-10V)	5000K (50K)			
	30° Optics (30D)	12 Watts: 1524 Lumens / ft* <sup>1</sup> (12W)	Leave Blank for Non-Dimming	5700K (57K)			
45° Optics (45D)			Red (R)				
60° Optics (60D)			Green (G)				
			Blue (B)				
			Amber (A)				

**Note:** Remote drivers wattage sized based on length of run. **Example:** 10' run x 3 watts per foot = 30 watts. Driver will be sized to 30 watts maximum.

- <sup>1</sup> Lumens per Foot based on 35K CCT LED with Clear Lens (CL). **Example:** 127 Lumens x 1.5 Watts = 190 Lumens per Foot.
- <sup>2</sup> (L3DA) 40 watt max Hi-Lume 1% L3DA3W #L3DA4UIUKL-CV240
- <sup>3</sup> (L3D0) 96 watt max Hi-Lume Premier 0.1% #L3D0-96W24V-U
- <sup>4</sup> Default DMX address of each fixture is 001. Consult third party DMX commissioner to modify at time of installation.
- <sup>5</sup> DALI commissioning to be performed by a third party at time of installation. ALUZ does not provide DALI commissioning.

### LAMP FEATURES

<b>Lamp Type</b>	LEDs (No Mercury)
<b>CRI</b>	> 90
<b>Efficacy</b> (Based on 35K CCT LED)	108 Lumens per Watt

### LAMP SPECIFICATIONS

Lamp Number	Correlated Color Temperature / Description	Efficacy (Lumens per Watt)	L70 LED Life
24K	2400 Kelvin (Incandescent White)	108	60,000 hrs.
27K	2700 Kelvin (Warm White)	108	
30K	3000 Kelvin (Warm White)	108	
35K	3500 Kelvin (Neutral White)	108	
40K	4000 Kelvin (Neutral White)	108	
45K	4500 Kelvin (Neutral White)	108	40,000 hrs.
50K	5000 Kelvin (Cool White)	108	
57K	5700 Kelvin (Cool White)	108	
R	Red (621nm)		
G	Green (525nm)		
B	Blue (470nm)		
A	Amber (590nm)		

To calculate Lumens per Foot, multiply Efficacy by Watts per Foot.  
**Example:** 108 Lumens per Watt x 2 Watts per Foot = 216 Lumens per Foot.

### LENS / OPTICS APPEARANCE



50% Semi-Frosted Lens (SF)  
Slight Diode Image  
12.5% Loss Factor



100% Frosted Lens (F)  
No Diode Image: Line of Light  
25% Loss Factor



Asymmetric Lens (ASM)  
Slight Diode Image  
18% Loss Factor

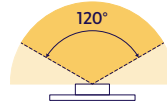


Optic Lens (15D, 30D, 45D, 60D)  
Slight Diode Image  
18% Loss Factor

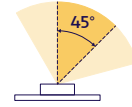
### DRIVERS

Dimming Selection	Product Code	Link to Specification Sheet / URL
Phase Dimming: Forward Phase / Reverse Phase	(PH)	
0-10V: 100% - 1%	(10V)	
Hi-Lume 1% 3 Wire	(L3DA)	
Hi-Lume Premier 0.1% JA8	(L3DO)	
JA8 0-10V	(JA8-10V)	
DMX-512	(DMX)	
DALI	(DALI)	

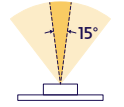
### BEAM ANGLES



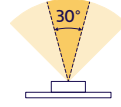
120° x 120° Beam  
Clear Lens (CL)  
50% Semi-Frosted Lens (SF)  
100% Frosted Lens (F)



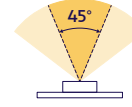
45° x 60° Beam  
Asymmetric Lens (ASM)



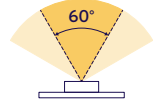
15° x 60° Beam  
Optic Lens (15D)



30° x 60° Beam  
Optic Lens (30D)

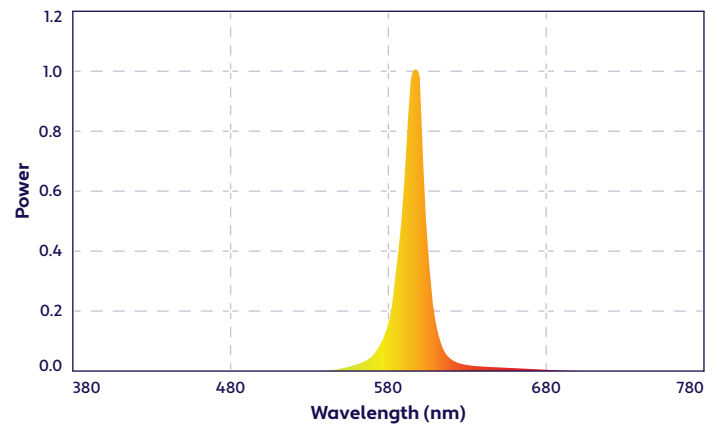


45° x 60° Beam  
Optic Lens (45D)



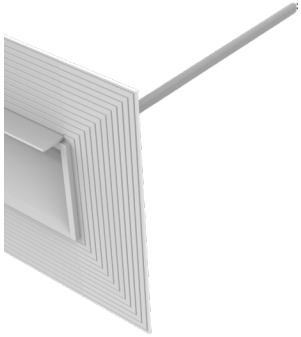
60° x 60° Beam  
Optic Lens (60D)

### SPECTRAL POWER DISTRIBUTION AMBER LED (590nm) TURTLE FRIENDLY



### CONNECTORS (Sold Separately)

**Note:** Connectors are factory assembled to each run length. Connectors are subject to change without notice.



Dry Plenum Rated Power Connector  
(20/2 Gauge Wire)

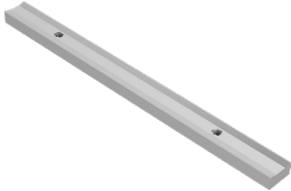
**(A2-ZUVU-FWW-PC-PLM-DRY-X)**

X = Specify Length, 36" Default, 25' Maximum

Part #	Length	Qty.
A2-ZUVU-FWW-PC-PLM-DRY-	36"	
A2-ZUVU-FWW-PC-PLM-DRY-		

**Note:** Specify 1 Power Connector for each lead required. Power Connectors are factory assembled to each length.

### MOUNTING ACCESSORIES (Sold Separately)



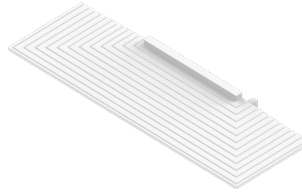
180° Lock Bar

**(A2-ZUVU-LB-180D)**

Part #	Qty.
A2-ZUVU-LB-180D	

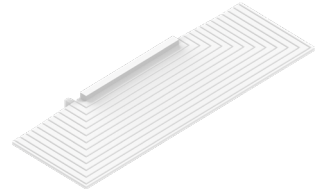
**Note:** Use 1 Lock Bar for each connection between two fixture segments.

### END CAPS (Sold Separately)



Left End Cap  
**(A2-ZUVU-FWW-ECL-WH)**

Part #	Qty.
A2-ZUVU-FWW-ECL-WH	

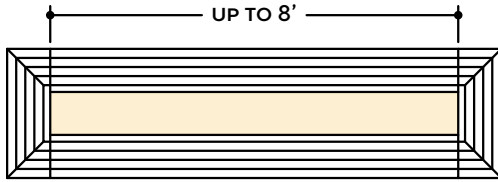


Right End Cap  
**(A2-ZUVU-FWW-ECR-WH)**

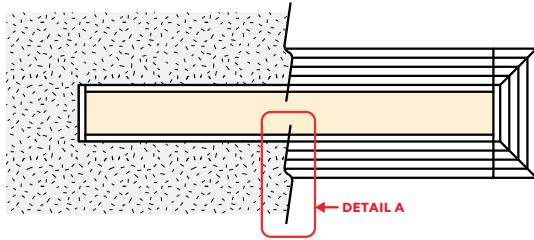
Part #	Qty.
A2-ZUVU-FWW-ECR-WH	

## DESIGN GUIDELINES

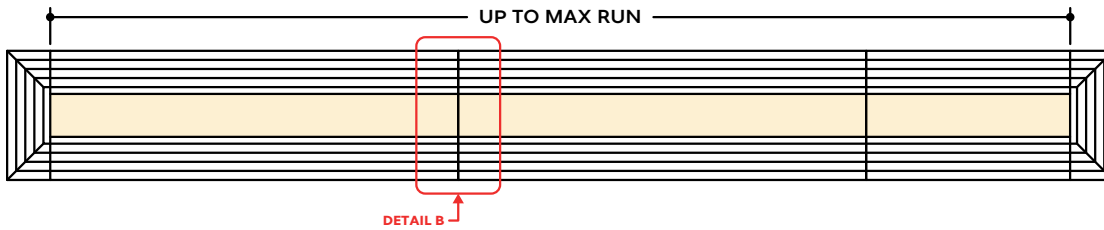
Individual Fixture



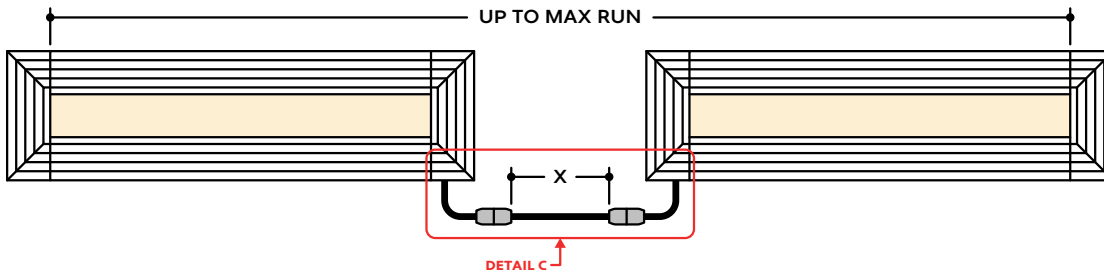
Individual Fixture with Mud-In



Continuous Run



Runs with Continuous Connector



## KEY

- Detail A** **Mud-In:** Plaster is used to cover the flanges of the extrusion, leaving a flush appearance. Refer to installation instructions for details.
- Detail B** **Continuous Connection (Dry Location):** Luminaire segments connect using pins, leaving no gaps between segments. Refer to installation instructions for additional information.
- Detail C** **Dry Continuous Connector:** Used to span a corner or traverse a gap, corner, or obstacle in a dry location installation area. For Mud-In applications, the connection is located behind the mounting surface, such as drywall.

**Note:** Drawings not to scale. Product may differ from examples shown.