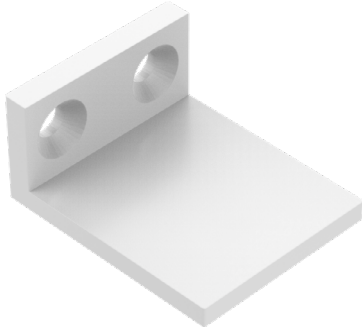




### Perspective View



### Assembled Dimensions

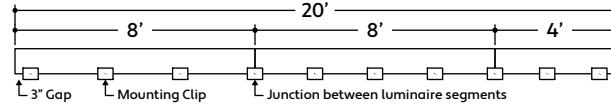


## A3 Series | Pendant ZITO Pendant Square - Vertical Stopper A3-ZITO-PSQ-VS

### DRY LOCATION APPLICATIONS

**Note:** The Vertical Stopper is to be used in conjunction with mounting clips to prevent downward sliding when luminaires are mounted vertically.

- 1 Measure area where luminaire will be installed. Use a laser line to create a reference line along installation area, ensuring consistent alignment of mounting clips. Mark location where each mounting clip and vertical stopper will be installed along reference line.
- 2 Use 1 mounting clip every 2', rounded up. Use a minimum of 2 mounting clips per luminaire segment. Use 1 Vertical Stopper at the bottom of each run.
- 3 Use a mounting clip at the junction between two luminaire segments.  
**Example:** 20' Run.



- 4 Lay mounting clips along reference line and pre-drill using an appropriate drill bit for surface material and screw size. Typical screw size is 8/32 x 1".  
**Note:** Allow 1/4" clearance on each side of mounting clip to account for lateral expansion. Only install mounting clips on flat, even surfaces.
- 5 Screw mounting clips and vertical stoppers to surface, then snap luminaire into mounting clips, allowing luminaire to rest on the vertical stopper

### WET LOCATION APPLICATIONS

- 1 Measure area where luminaire will be installed. Use a laser line to create a reference line along installation area, ensuring consistent alignment of mounting clips. Mark location where each mounting clip will be installed along reference line.
- 2 Use 1 mounting clip every 2', rounded up. Use a minimum of 2 mounting clips per luminaire segment. Use 1 Vertical Stopper at the bottom of each run.
- 3 Space mounting clips evenly throughout the run.  
**Example:** 20' Run.

