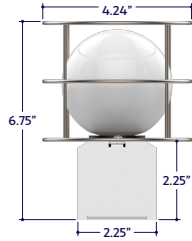


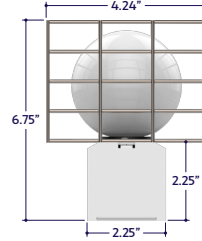
SERIES OPTIONS



No Guards
(A6-ZEM Y-STN)



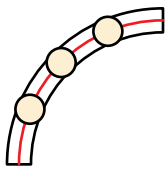
Round Guards
(A6-ZEM Y-STN-RG)



Square Guards
(A6-ZEM Y-STN-SG)

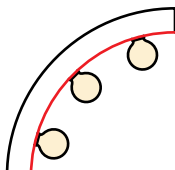
CUSTOM CURVING (See Page 4 for Details)

Lamp Standard (LS)



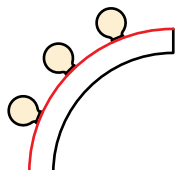
Lamp Standard

Lamp Inside (LI)



Lamp Inside

Lamp Outside (LO)



Lamp Outside

GENERAL FEATURES

Applications	Mirror, Marquee, Accent, Linear Lighting
Housing	Aluminum Extrusion
Length	Built to Order
Listing	Dry or Wet Location UL1598, CSA C22.2#250.0 UL8750, CSA250 UL2108, CSA C22.2 #9
Lamps	LED Lamps (Included) Incandescent Lamps (Not Included)
Options	Incandescent Lamps (Not Included) Square Lamp Guards, Round Lamp Guards, Receptacles, Switches, or Square Baffles

Installation Link

ELECTRICAL

Dimming	Forward Phase
Maximum Watts	600 Watts
Socket	Medium Base
Luminaire Voltage	120V

MAXIMUM RUNS

Lamp Shape	Lamps Watts	On Center Spacing				
		4"	6"	8"	9"	12"
GSF	1W	200'	300'	400'	450'	600'
GSFW	3.8W	52'	78'	104'	117'	157'
ASF	8.8W	22'	34'	45'	52'	68'
GSFL	3W	66'	100'	133'	150'	200'
GSFLW	3.8W	200'	300'	400'	450'	600'

SPECIFY PRODUCT CODE | CHOOSE FROM DROP DOWNS

Series	Guards	Spacing	Lamp	Dimming	Listing	Finish	Optional Add Ons	Luminaire Length
A6-ZEM Y-STN				DM				
ZEM Y (A6-ZEM Y-STN)	Leave Blank for No Guards	4" on Center ¹ (4")	2700K, GSF (27K-GSF)	Forward Phase (DM)	Indoor (DRY)	Natural Silver ² (NA)	Receptacle (REC)	Specify Length in Feet & Inches Example: 100'
			5000K, GSF (50K-GSF)			4000K, GSFL (40K-GSFL)		
	Round Guards (RG)	6" on Center (6")	Red, GSF (R-GSF)	Leave Blank for Non-Dimming	Outdoor (WET)	White (WH)	Switch (SW)	
			Green, GSF (G-GSF)			2400K, GSFLW (24K-GSFLW)		
	Square Guards (SG)	8" on Center (8")	Blue, GSF (B-GSF)	2700K, GSFLW (27K-GSFLW)	Gold (AG)	Receptacle & Switch (REC-SW)		
			Amber, GSF (A-GSF)	3000K, GSFLW (30K-GSFLW)	Bronze (ABR)			
			2700K, GSFW (27K-GSFW)	5000K, GSFLW (50K-GSFLW)	4" x 4" Baffles ³ (BAF4)			
		12" on Center (12")	2700K, ASF (27K-ASF)			6" x 6" Baffles ³ (BAF6)		
			2400K, GSFL (24K-GSFL)					
		24" on Center (24")	2700K, GSFL (27K-GSFL)			Leave Blank for No Additions		
3000K, GSFL (30K-GSFL)								

¹ 4" on Center Spacing (4") will be spaced at 4-1/2" on center if Round Guards (RG) or Square Guards (SG) is selected.
² Default Finish is Natural Silver (NA) if left blank.
³ Baffles not available with Round Guards (RG) or Square Guards (SG).



LAMP OPTIONS

Lamp Image & Dimensions					
Lamp Name & Product Code	G-Shaped Lamp (GSF)	G-Shaped Lamp Wide (GSFW)	A-Shaped Lamp (ASF)	G-Shaped Filament Lamp (GSFL)	G-Shaped Filament Lamp Wide (GSFLW)
Lamp Type	Standard LED	Standard LED	Standard LED	Filament LED	Filament LED
Material	Polymer Plastic	Polymer Plastic	Polymer Plastic	Glass	Glass
Lamp Life	20,000 hrs.	15,000 hrs.	25,000 hrs.	25,000 hrs.	15,000 hrs.
Lumens	42	350	800	256	350
Beam Angle	360°	360°	360°	360°	360°
Appearance	Frosted	Frosted	Frosted	Clear	Clear
CCT & Colors	27K, 50K, R, G, B, A	27K, 50K	27K	24K, 27K, 30K, 35K, 40K, 50K	24K, 27K, 30K, 50K
Lamp Watts	1W	3.8W	8.8W	3W	3.8W

Note: Lamp dimensions are subject to change without notice. +/- 0.25W Wattage Tolerance.

LAMP SPECIFICATIONS

Lamp Number	Correlated Color Temperature (CCT)	Description	Compatible Lamp Shapes
24K	2400 Kelvin	Incandescent White	(GSFL), (GSFLW)
27K	2700 Kelvin	Warm White	(GSF), (GSFW), (ASF), (GSFL), (GSFLW)
30K	3000 Kelvin	Warm White	(GSFL), (GSFLW)
35K	3500 Kelvin	Neutral White	(GSFL)
40K	4000 Kelvin	Neutral White	(GSFL)
50K	5000 Kelvin	Cool White	(GSF), (GSFW), (GSFL), (GSFLW)
R	Red	621nm	(GSF)
G	Green	525nm	(GSF)
B	Blue	470nm	(GSF)
A	Amber	590nm	(GSF)

ACCESSORIES (Sold Separately)



Continuous Connector
(A6-ZEM Y-STN-CC)

Part #	Qty.
A6-ZEM Y-STN-CC	

Note: Use 1 Continuous Connector for each junction between two segments.



End Cap
(A6-ZEM Y-STN-EC-X)
X = Specify Finish

Part #	Finish	Qty.
A6-ZEM Y-STN-EC-		

Note: Use 1 End Cap for each terminus without a power feed. Default Finish is Natural Silver (NA) if left blank.

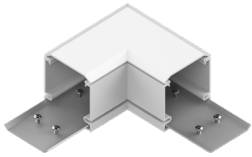


End Cap with Knockout
(A6-ZEM Y-STN-ECK-X)
X = Specify Finish

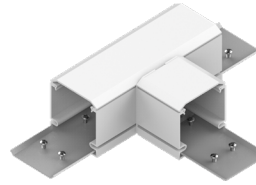
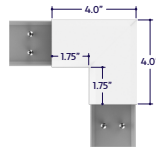
Part #	Finish	Qty.
A6-ZEM Y-STN-ECK-		

Note: Use 1 End Cap for each terminus where a power feed will be installed. Default Finish is Natural Silver (NA) if left blank.

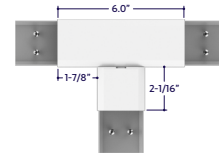
FACTORY-BUILT MITER CORNERS (Sold Separately)



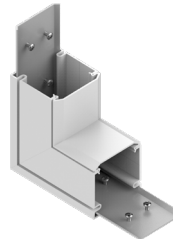
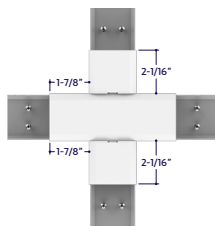
Part #	Qty.
A6-ZEM Y-STN-FE-90D	



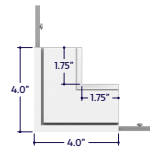
Part #	Qty.
A6-ZEM Y-STN-TC-90D	



Part #	Qty.
A6-ZEM Y-STN-XC-90D	



Part #	Qty.
A6-ZEM Y-STN-IE-90D	

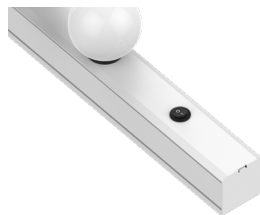


OPTIONAL ADD-ONS (Specified in Product Code)



GFCI Receptacle
(REC)

Note: A GFCI receptacle located at the end of the fixture. Receptacle may affect lamp spacing or number of lamps.



Switch
(SW)

Note: A power switch located at the end of the fixture. Switch may affect lamp spacing or number of lamps.



GFCI Receptacle & Switch
(REC-SW)

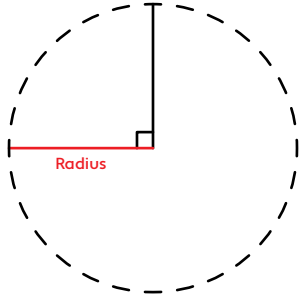
Note: A GFCI receptacle and power switch located at the end of the fixture. Receptacle and switch may affect lamp spacing or number of lamps.

CUSTOM CURVING

Custom Curving is the process of shaping an aluminum channel to a specific radius. Follow the below guide to specify a custom curve.

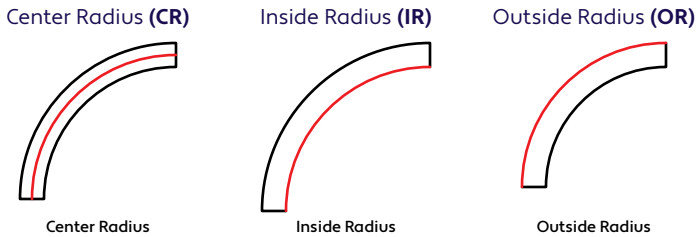
RADIUS

A **Radius** is a line extending from the center of a circle to the edge or bounding surface of a circle. The Radius is shown as the red line in the below diagram.



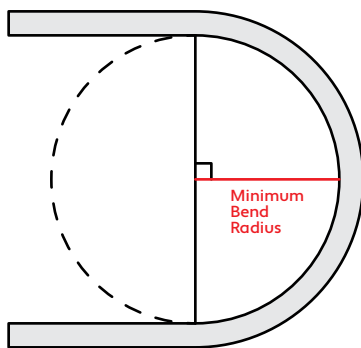
CURVE STYLE

Curve Style is the edge of the circle the curve will follow. There are 3 curve styles:



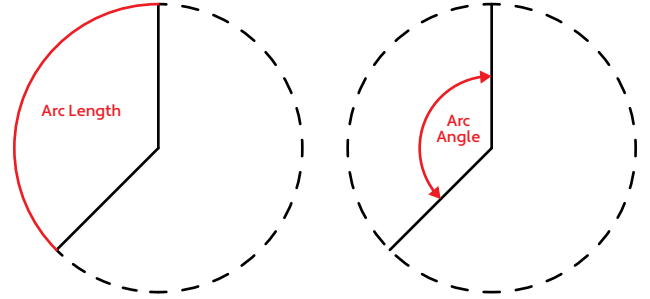
MINIMUM BEND RADIUS

The **Minimum Bend Radius** is the smallest radius the channel is capable of bending, shown in the below diagram. The Minimum Bend Radius of the ZEMY is 4'.



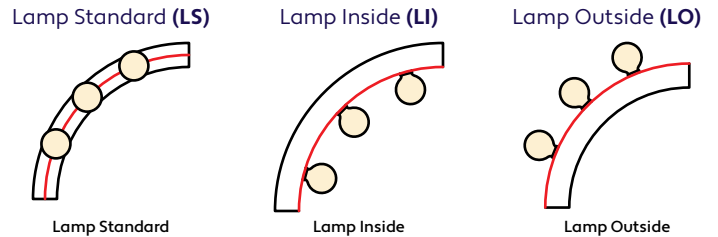
ARC LENGTH & ARC ANGLE

Arc Length is a fraction of the circumference of a circle. If the **Arc Angle** is known, the length can be calculated using the formula:
Arc Length = Radius x Arc Angle.



LAMP STYLE

Lamp Style is the orientation of the lamps in relation to the curve. There are 3 lamp styles:



HOW TO ORDER

Provide the following information at time of order:

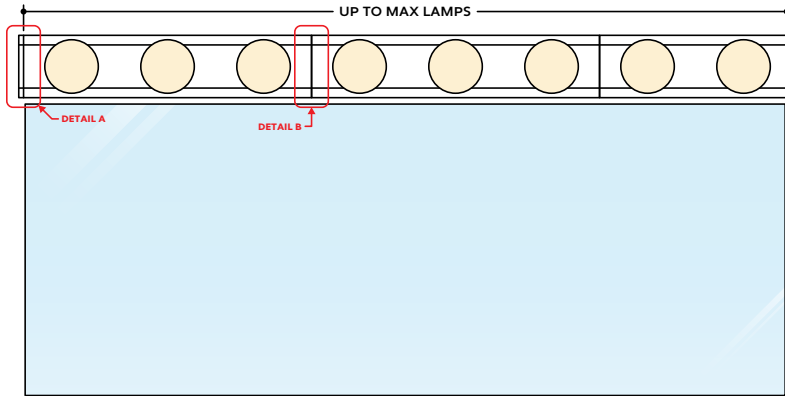
- The **Radius** of the circle that the curve is part of.
- The **Arc Length** of the custom curve.
- The **Curve Style** of the custom curve.
- The **Lamp Style** of the custom curve.

LIMITATIONS

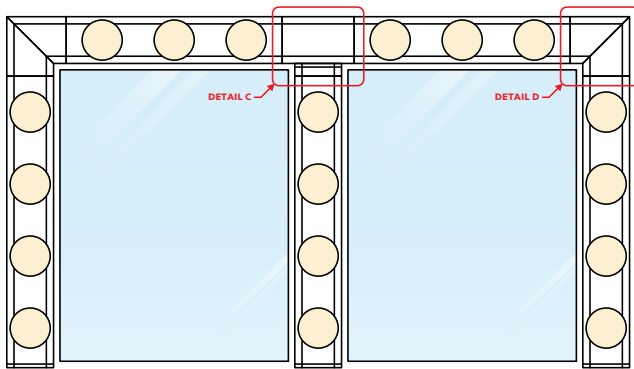
- Custom Curves must be based on a perfect circle
- We do not offer free-form curving
- A single extrusion cannot be bent into a circle
- Curves are built in segments up to 6' in length
- 4' Minimum Bend Radius

DESIGN GUIDELINES

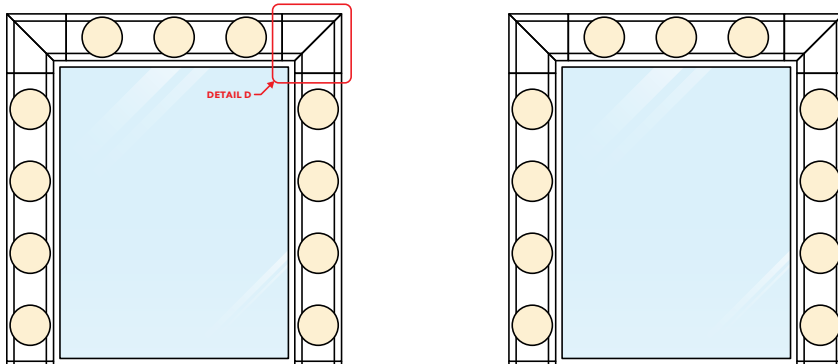
Continuous Run Over Single Mirror



Run with Mitered Corners Over Double Mirror



Runs with Mitered Corners Over Two Mirrors



KEY

- Detail A** Hardwire Connection: Power lead exits through back / bottom of fixture.
- Detail B** Continuous Connection : Fixture segments are butted together, leaving no gaps, with a Continuous Connector (A6-ZEMY-CC) holding the two segments together. Refer to installation instructions for additional information.
- Detail C** 90° T-Connector: Fixture segments are joined with a factory-built miter corner. Refer to miter corner cut sheet for additional information.
- Detail D** 90° Flat Elbow: Fixture segments are joined with a factory-built miter corner. Refer to miter corner cut sheet for additional information.

Note: Drawings not to scale. Product may differ from examples shown.