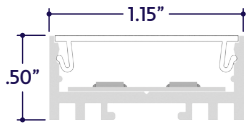


END VIEW / DIMENSIONS



GENERAL FEATURES

Applications	Accent, Decorative, Surface, Recessed, Pendant Lighting
Lens	Clear, 50% Semi-Frosted, or 100% Frosted
Viewing Angle	120°
Length	Built to Order (+/- 1/8" Tolerance)
Construction	Aluminum Extrusion
Field Cutting	Dry Location Field Cuttable
Weight	0.241 lbs per foot
Mounting	Mounting Channel or Mounting Clips (Sold Separately)
Listing	Dry Location UL2108, 67.1.9, 60.4, CSA C22.2 #9 UL8750, CSA250
Temperature Ratings	Operating / Startup: -20° to 48°C (-4° to 120°F) Storage: -40° to 76°C (-40° to 170°F)

[Installation Link](#)

ELECTRICAL

Dimming	DMX, DALI
Maximum Run (Class 1 Applications)	13' (9W) 16' (7.2W)
Maximum Run (Class 2 Applications)	9' (9W) 11' (7.2W)
Luminaire Voltage	24VDC

SPECIFY PRODUCT CODE | CHOOSE FROM DROP DOWNS

Series	Lens	Watts per Foot	Dimming	LED	Listing	Finish	Luminaire Length
A8-ZOMU-SDL		9W		DWH	DRY		
ZOMU Standard Low (A8-ZOMU-SDL)	Clear Lens (CL)	9 Watts (9W)	DMX-512* ¹ (DMX)	Dynamic White: 2400K - 6400K (DWH)	Indoor (DRY)	Natural Silver* ³ (NA)	Specify Length in Feet & Inches Example: 7'8"
	50% Semi-Frosted Lens (SF)		DALI* ² (DALI)			Polished (PA)	
	100% Frosted Lens (F)					White (WH)	
						Satin / Silver (SA)	
						Black (BK)	

*¹ Default DMX address of each luminaire is 001. Consult third party DMX commissioner to modify at time of installation.

*² DALI commissioning to be performed by a third party at time of installation. ALUZ does not provide DALI commissioning.

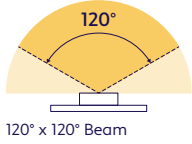
*³ Default finish is Natural Silver (NA) if left blank.



LAMP FEATURES

Lamp Type	Dynamic White LEDs: 2400K - 6400K
CRI	> 90

BEAM ANGLE



LAMP SPECIFICATIONS

Lamp Number	Correlated Color Temperature (CCT) Gamut	L70 LED Life
DWH	Dynamic White: 2400K - 6400K	50,000 hrs.

LENS / OPTICS APPEARANCE



Clear Lens (CL)
Visible Diode Image
0% Loss Factor



50% Semi-Frosted Lens (SF)
Slight Diode Image
12.5% Loss Factor



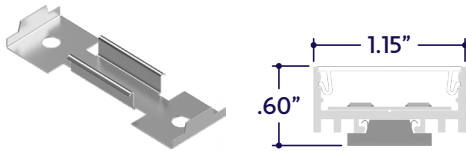
100% Frosted Lens (F)
Slight Diode Image
25% Loss Factor

DRIVERS

Dimming Selection	Product Code	Link to Specification Sheet / URL
DMX-512	(DMX)	
DALI	(DALI)	

MOUNTING OPTIONS (Sold Separately)

Note: Mounting clips are only available in Natural Silver Finish, unless otherwise specified.



Part #	Qty.
A8-ZOMU-SDL-MC	

Note: Use 1 mounting clip per 2', rounded up.
Click on image to see cut sheet for additional details.

DMX ACCESSORIES (Sold Separately)



Part #	Qty.
DRV100-E-UNV-24VDC-DMX-DRY-DWH	
DRV100-E-UNV-24VDC-DALI-DRY-DWH	

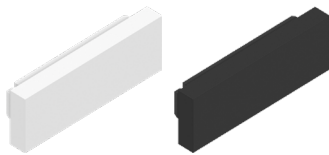
Note: Use 1 Driver for each run up to 100 Watts.
Click on image to see Specification Submittal.



Part #	Qty.
CTRL-DMX-RGBX	

Note: Use 1 Decoder for each run up to 180 Watts. Not required if using DRV100-E.

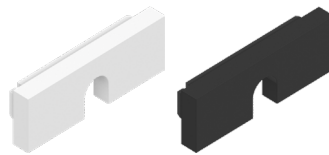
END CAPS (Sold Separately)



End Cap
(A8-ZOMU-SDL-EC-X)
X = Specify Finish: White (WH) or Black (BK)

Part #	Qty.
A8-ZOMU-SDL-EC-WH	
A8-ZOMU-SDL-EC-BK	

Note: Default Finish is Black (BK) if unspecified.



End Cap with Exit Hole
(A8-ZOMU-SDL-EC-H-X)
X = Specify Finish: White (WH) or Black (BK)

Part #	Qty.
A8-ZOMU-SDL-EC-H-WH	
A8-ZOMU-SDL-EC-H-BK	

Note: Default Finish is Black (BK) if unspecified.



Part #	Qty.
CTRL-DMX-128C	

Note: Controls up to 128 DMX Channels,
or up to 32 RGBW light fixtures.



Part #	Qty.
CTRL-DMX-1024C	

Note: Controls up to 1024 DMX Channels, or up
to 256 RGBW light fixtures.

DRY CONNECTORS (Sold Separately)

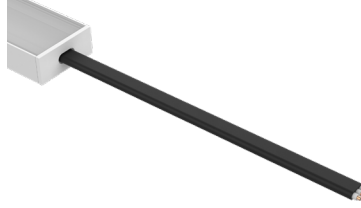
Note: Connectors are factory assembled to each run length. Connectors are subject to change without notice.



Dry Power Connector
(20/3 Gauge Wire)
(A8-ZOMU-SDL-PC-DRY-X)
X = Specify Length, 36" Default, 25' Maximum

Part #	Length	Qty.
A8-ZOMU-SDL-PC-DRY-	36"	
A8-ZOMU-SDL-PC-DRY-		

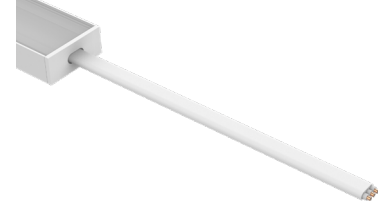
Note: Specify 1 Power Connector for each lead required. Power Connectors are factory assembled to each length.



Dry Power Connector with Black Jacket
(20/3 Gauge Wire)
(A8-ZOMU-SDL-PC-DRY-BK-X)
X = Specify Length, 36" Default, 25' Maximum

Part #	Length	Qty.
A8-ZOMU-SDL-PC-DRY-BK-	36"	
A8-ZOMU-SDL-PC-DRY-BK-		

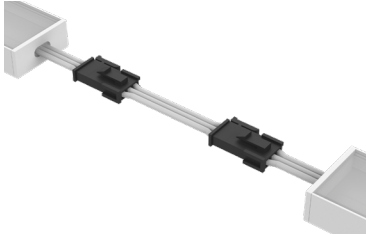
Note: Specify 1 Power Connector for each lead required. Power Connectors are factory assembled to each length.



Dry Power Connector with White Jacket
(20/3 Gauge Wire)
(A8-ZOMU-SDL-PC-DRY-WH-X)
X = Specify Length, 36" Default, 25' Maximum

Part #	Length	Qty.
A8-ZOMU-SDL-PC-DRY-WH-	36"	
A8-ZOMU-SDL-PC-DRY-WH-		

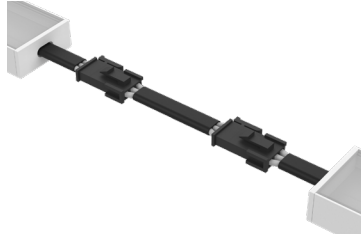
Note: Specify 1 Power Connector for each lead required. Power Connectors are factory assembled to each length.



Dry Continuous Connector
(20/3 Gauge Wire)
(A8-ZOMU-SDL-CC-DRY-X)
X = Specify Length, 3" Default

Part #	Length	Qty.
A8-ZOMU-SDL-CC-DRY-	3"	
A8-ZOMU-SDL-CC-DRY-		

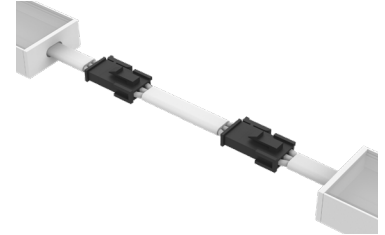
Note: Specify Continuous Connectors to traverse a gap or obstacle. Continuous Connectors are factory assembled to specified lengths.



Dry Continuous Connector with Black Jacket
(20/3 Gauge Wire)
(A8-ZOMU-SDL-CC-DRY-BK-X)
X = Specify Length, 3" Default

Part #	Length	Qty.
A8-ZOMU-SDL-CC-DRY-BK-	3"	
A8-ZOMU-SDL-CC-DRY-BK-		

Note: Specify Continuous Connectors to traverse a gap or obstacle. Continuous Connectors are factory assembled to specified lengths.



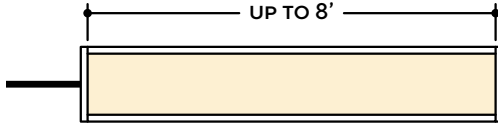
Dry Continuous Connector with White Jacket
(20/3 Gauge Wire)
(A8-ZOMU-SDL-CC-DRY-WH-X)
X = Specify Length, 3" Default

Part #	Length	Qty.
A8-ZOMU-SDL-CC-DRY-WH-	3"	
A8-ZOMU-SDL-CC-DRY-WH-		

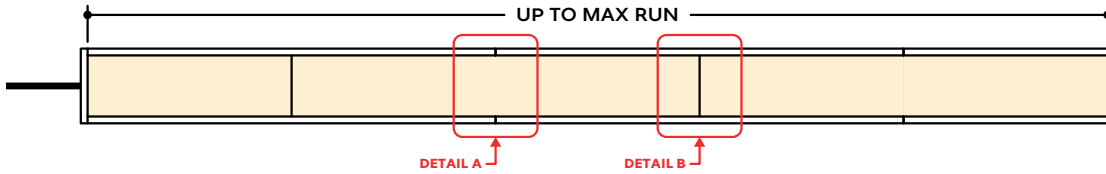
Note: Specify Continuous Connectors to traverse a gap or obstacle. Continuous Connectors are factory assembled to specified lengths.

DESIGN GUIDELINES

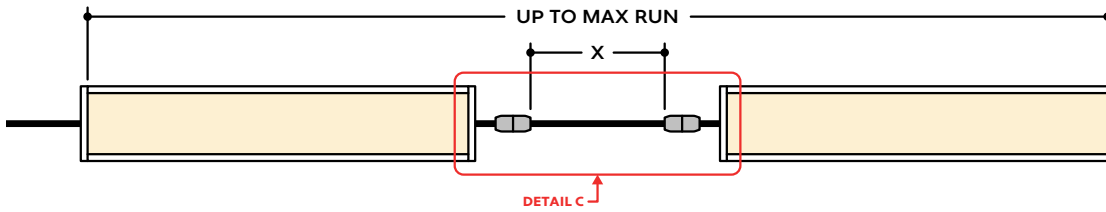
Individual Fixture



Continuous Run (Dry Location)



Runs with Continuous Connector (Dry Location)

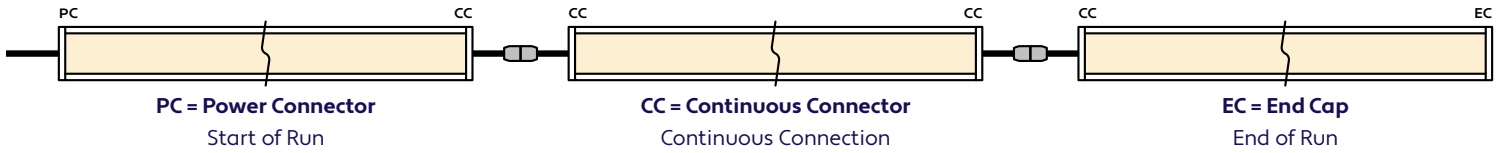


KEY

- Detail A Two Extrusions Meet:** Two extrusion segments meet, held together by a mounting clip. Refer to installation instructions for additional details.
- Detail B Two Lenses Meet:** Lenses are staggered so that the lens always overlaps where two extrusion segments meet. Refer to installation instructions for additional details.
- Detail C Dry Continuous Connector:** Used to span a corner or traverse a gap, corner, or obstacle in a dry location installation area.

Note: Drawings not to scale. Product may differ from examples shown.

CONNECTION SEQUENCE

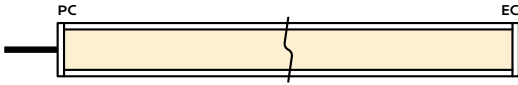


- Specifying a layout is not required to place an order.
- Configuration code applies to full length ordered and will be built per the Continuous Run models on Design Guidelines.
- Connector type subject to change based on availability and listing. Refer to Design Guidelines for details.

HOW TO SPECIFY CONFIGURATIONS

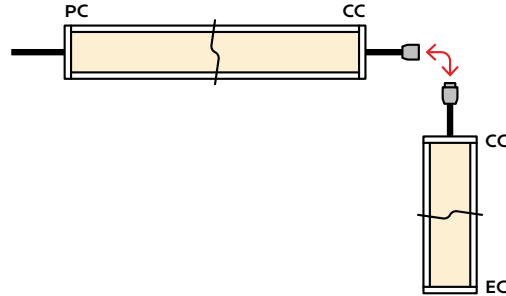
Example: 20' Straight Run

- 1x A8-ZOMU-SDL-CL-9W-DMX-DWH-DRY-NA-20'-PC-EC



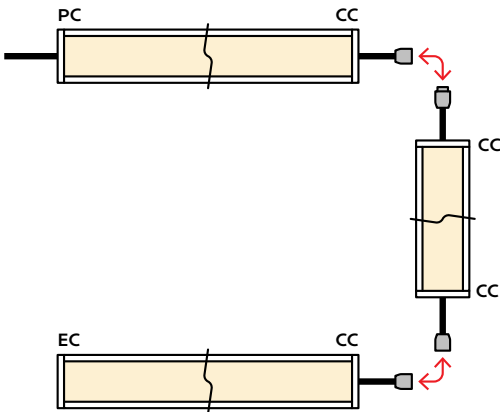
Example: 25' L-Shaped Run

- 1x A8-ZOMU-SDL-CL-9W-DMX-DWH-DRY-NA-12'-PC-CC
- 1x A8-ZOMU-SDL-CL-9W-DMX-DWH-DRY-NA-6'-CC-EC



Example: 30' U-Shaped Run

- 1x A8-ZOMU-SDL-CL-9W-DMX-DWH-DRY-NA-6'-PC-CC
- 1x A8-ZOMU-SDL-CL-9W-DMX-DWH-DRY-NA-18'-CC-CC
- 1x A8-ZOMU-SDL-CL-9W-DMX-DWH-DRY-NA-6'-CC-EC



Example: 28' Rectangle Shaped Run

- 1x A8-ZOMU-SDL-CL-9W-DMX-DWH-DRY-NA-11'-PC-CC
- 1x A8-ZOMU-SDL-CL-9W-DMX-DWH-DRY-NA-3'-CC-CC
- 1x A8-ZOMU-SDL-CL-9W-DMX-DWH-DRY-NA-11'-CC-CC
- 1x A8-ZOMU-SDL-CL-9W-DMX-DWH-DRY-NA-3'-CC-EC

