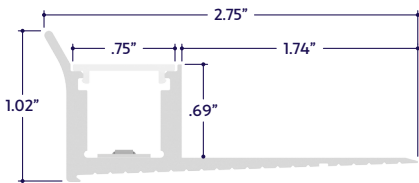


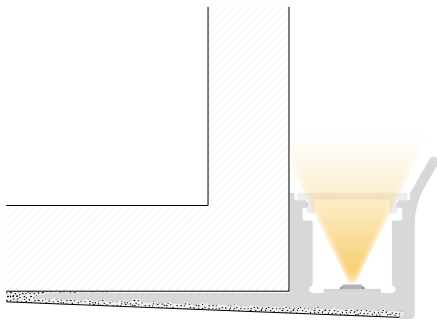
GENERAL FEATURES

Applications	Mud-In, Accent, Decorative, Surface, Recessed Lighting
Lens	50% Semi-Frosted, or 100% Frosted
Viewing Angle	120°
Length	Built to Order (+/- 1/8" Tolerance)
Construction	Aluminum Extrusion
Weight	0.47 lbs per foot
Mounting	Mud-In
Listing	Dry or Damp Location UL2108, CSA C22.2 #9 UL8750, CSA250
Driver	Remote (Sold Separately)
Temperature Ratings	Operating / Startup: -20° to 48°C (-4° to 120°F) Storage: -40° to 76°C (-40° to 170°F)
Installation Link	

END VIEW / DIMENSIONS



MOUNTING OPTION



Mud-In

LENS / OPTICS APPEARANCE



50% Semi-Frosted Lens (SF)
Slight Diode Image
12.5% Light Loss

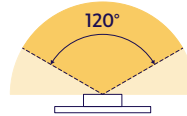


100% Frosted Lens (F)
No Diode Image: Line of Light
25% Light Loss

ELECTRICAL

Dimming	DMX, DALI
Maximum Run (Class 1 Applications)	26' (4.5W) 33' (3.6W)
Maximum Run (Class 2 Applications)	18' (4.5W) 23' (3.6W)
Luminaire Voltage	24VDC

BEAM ANGLE



120° x 120° Beam

SPECIFY PRODUCT CODE | CHOOSE FROM DROP DOWNS

Series	Lens	Watts per Foot	Dimming	LED	Listing	Finish	Luminaire Length
A8-ZUDA-FPR				DWH			
ZUDA Flush Perimeter (A8-ZUDA-FPR)	50% Semi-Frosted Lens (SF)	3.6 Watts (3.6W)	DMX-512*1 (DMX)	2400K - 6400K (DWH)	Indoor (DRY)	Natural Silver (NA) Polished (PA)	Specify Length in Feet & Inches Example: 7'8"
	100% Frosted Lens (F)	4.5 Watts (4.5W)	DALI*2 (DALI)		Outdoor (DAMP)	White*3 (WH) Satin / Silver (SA)	
						Black (BK)	

*1 Default DMX address of each luminaire is 001. Consult third party DMX commissioner to modify at time of installation.
*2 DALI commissioning to be performed by a third party at time of installation. ALUZ does not provide DALI commissioning.
*3 Default finish is White (WH) if left blank.



LAMP SPECIFICATIONS

Lamp Number	Correlated Color Temperature (CCT) Gamut	L70 LED Life
DWH	Dynamic White: 2400K - 6400K	50,000 hrs.

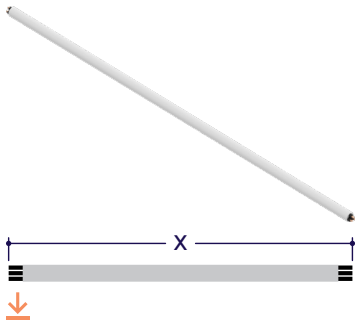
LAMP FEATURES

Lamp Type	Dynamic White LEDs: 2400K - 6400K
CRI	> 90

DRIVERS

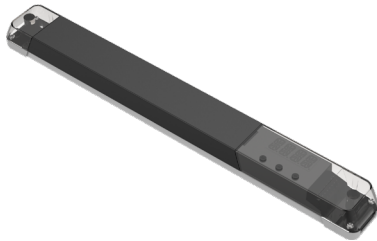
Dimming Selection	Product Code	Link to Specification Sheet / URL
DMX-512*1	(DMX)	
DALI*2	(DALI)	

DRY CONNECTORS (Sold Separately)



Part #	Length	Qty.
A8-PC-3P-PLM-DRY-	36"	
A8-PC-3P-PLM-DRY-		

DMX ACCESSORIES (Sold Separately)



↓

Part #	Qty.
DRV100-E-UNV-24VDC-DMX-DRY	
DRV100-E-UNV-24VDC-DALI-DRY	

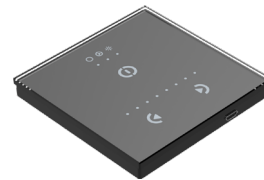
Note: Use 1 Driver / Decoder for each run up to 100 Watts.



↓

Part #	Qty.
CTRL-DMX-RGBX	

Note: Use 1 Decoder for each run up to 96 Watts. Not required if using all-in-one driver / decoder (DRV100-E).



↓

Part #	Qty.
CTRL-DMX-128C	

Note: Controls up to 128 DMX Channels.



↓

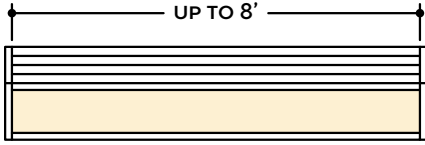
Part #	Qty.
CTRL-DMX-1024C	

Note: Controls up to 1024 DMX Channels.

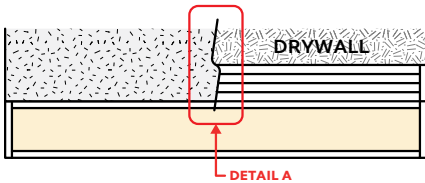


DESIGN GUIDELINES

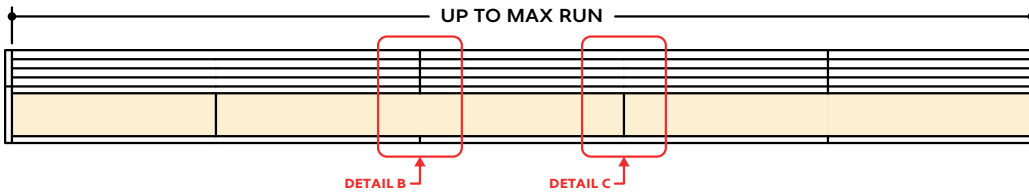
Individual Fixture



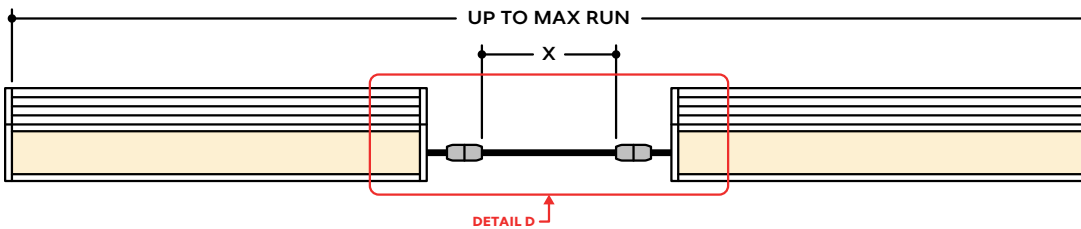
Individual Fixture with Mud-In



Continuous Run



Runs with Continuous Connector (Dry Location)



KEY

- Detail A Mud-In:** Plaster is used to cover the flanges of the extrusion, leaving a flush appearance. Refer to installation instructions for details.
- Detail B Two Extrusions Meet:** Two extrusion segments meet. Refer to installation instructions for additional details.
- Detail C Two Lenses Meet:** Lenses are staggered so that the lens always overlaps where two extrusion segments meet. Refer to installation instructions for additional details.
- Detail D Dry Continuous Connector:** Used to span a corner or traverse a gap, corner, or obstacle in a dry location installation area.

Note: Drawings not to scale. Product may differ from examples shown.