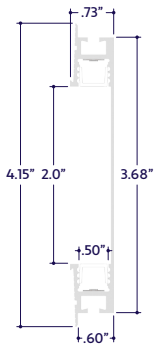


END VIEWS / DIMENSIONS



MOUNTING OPTION



Mud-In / Plaster

GENERAL FEATURES

Applications	Mud-In, Accent, Decorative, Surface, Recessed Lighting
Lens	50% Semi-Frosted or 100% Frosted
Viewing Angle	120°
Length	Built to Order (+/- 1/8" Tolerance)
Construction	Aluminum Extrusion
Field Cutting	Dry and Damp Location Field Cuttable
Weight	0.81 lbs per foot
Mounting	Mud-In
Listing	Dry or Damp Location UL2108, 67.1.9, 60.4, CSA C22.2 #9 UL8750, CSA250
Driver	Remote (Sold Separately)
Closet Rating	Up to 3.6 Watts per Foot Maximum
Temperature Ratings	Operating / Startup: -20° to 48°C (-4° to 120°F) Storage: -40° to 76°C (-40° to 170°F)
Installation Link	

ELECTRICAL

Dimming	DMX, DALI
Maximum Run (Class 1 Applications)	26' (9W), 33' (7.2W)
Maximum Run (Class 2 Applications)	9' (9W), 11' (7.2W)
Luminaire Voltage	24VDC

SPECIFY PRODUCT CODE | CHOOSE FROM DROP DOWNS

Series	Lens	Watts per Foot* ¹	Dimming	LED	Listing	Finish	Luminaire Length
A8-ZUDA-FWD				DWH		WH	
ZUDA Flush Wall Duo (A8-ZUDA-FWD)	50% Semi-Frosted Lens (SF)	3.6 Watts + 3.6 Watts (7.2W)	DMX-512* ² (DMX)	2400K - 6400K (DWH)	Indoor (DRY)	White* (WH)	Specify Length in Feet & Inches Example: 7'8"
	100% Frosted Lens (F)	4.5 Watts + 3.5 Watts (9W)	DALI* ³ (DALI)		Outdoor (DAMP)		

- *¹ Watts per Foot based on wattage of both LED sources within luminaire combined.
- *² Default DMX address of each luminaire is 001. Consult third party DMX commissioner to modify at time of installation.
- *³ DALI commissioning to be performed by a third party at time of installation. ALUZ does not provide DALI commissioning.
- *⁴ Default finish is White (WH) if left blank.

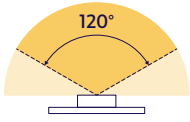


LAMP FEATURES

Lamp Type	Dynamic White LEDs: 2400K - 6400K
CRI	> 90
Efficacy*	102 Lumens per Watt @ Lowest CCT (24K) 112 Lumens per Watt @ Highest CCT (64K)

Note: Efficacy is based on 24K CCT LED (**24K**) with 50% Semi-Frosted Lens (**SF**).

BEAM ANGLE



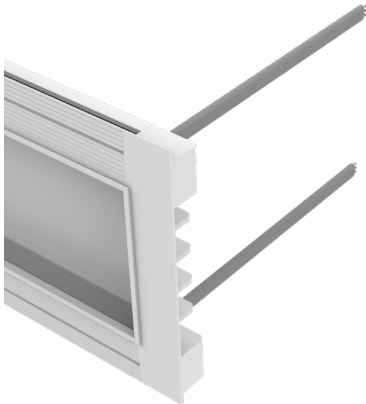
120° x 120° Beam

DRIVERS

Dimming Selection	Product Code	Link to Specification Sheet / URL
DMX-512	(DMX)	
DALI	(DALI)	

CONNECTORS (Sold Separately)

Note: Connectors are factory assembled to each run length. Connectors are subject to change without notice.



Dry Plenum Rated Power Connector
(20/3 Gauge Wire)
(A8-ZUDA-FWD-PC-PLM-DRY-X)
X = Specify Length, 36" Default, 25' Maximum

Part #	Length	Qty.
A8-ZUDA-FWD-PC-PLM-DRY-	36"	
A8-ZUDA-FWD-PC-PLM-DRY-		

Note: Specify 1 Power Connector for each lead required. Power Connectors are factory assembled to each length.

LAMP SPECIFICATIONS

Lamp Number	Correlated Color Temperature (CCT) Gamut	L70 LED Life
DWH	Dynamic White: 2400K - 6400K	50,000 hrs.

LENS / OPTICS APPEARANCE



50% Semi-Frosted Lens (**SF**)
Slight Diode Image
12.5% Light Loss



100% Frosted Lens (**F**)
No Diode Image: Line of Light
25% Light Loss

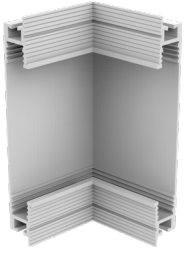
END CAP (Sold Separately)



End Cap
(A8-ZUDA-FWD-EC-WH)

Part #	Qty.
A8-ZUDA-FWD-EC-WH	

MITERED CORNERS (Sold Separately)



90° Internal Corner
(A8-ZUDA-FWD-90D-IN)

Part #	Qty.
A8-ZUDA-FWD-90D-IN	



90° External Corner
(A8-ZUDA-FWD-90D-EX)

Part #	Qty.
A8-ZUDA-FWD-90D-EX	

DMX ACCESSORIES (Sold Separately)



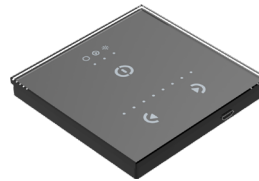
Part #	Qty.
DRV100-E-UNV-24VDC-DMX-DRY-DWH	
DRV100-E-UNV-24VDC-DALI-DRY-DWH	

Note: Use 1 Driver for each run up to 100 Watts.
Click on image to see Specification Submittal.



Part #	Qty.
CTRL-DMX-RGBX	

Note: Use 1 Decoder for each run up to 180 Watts. Not required if using DRV100-E.



Part #	Qty.
CTRL-DMX-128C	

Note: Controls up to 128 DMX Channels,
or up to 32 RGBW light fixtures.

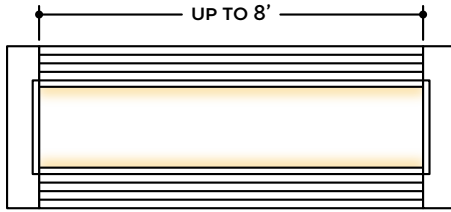


Part #	Qty.
CTRL-DMX-1024C	

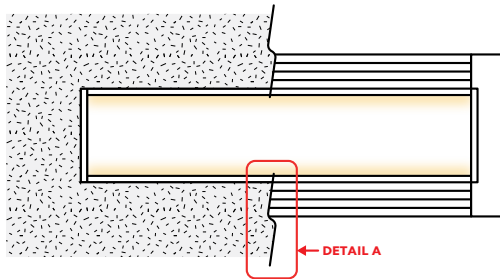
Note: Controls up to 1024 DMX Channels, or up
to 256 RGBW light fixtures.

DESIGN GUIDELINES

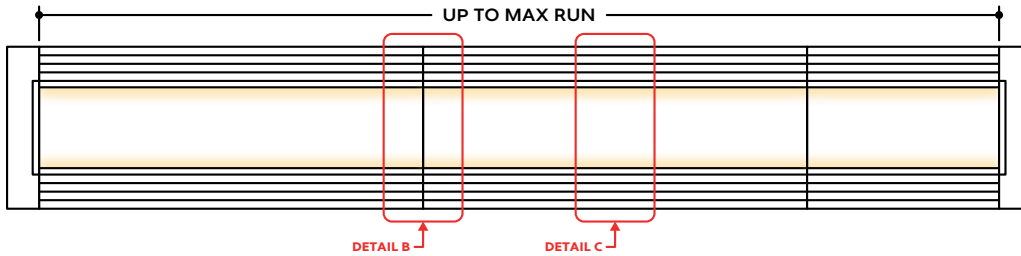
Individual Fixture



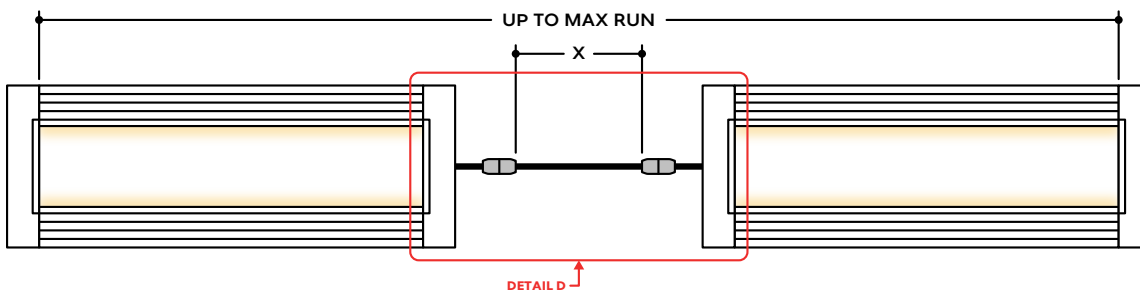
Individual Fixture with Mud-In



Continuous Run



Runs with Continuous Connector



KEY

- Detail A Mud-In:** Plaster is used to cover the flanges of the extrusion, leaving a flush appearance. Refer to installation instructions for details.
- Detail B Two Extrusions Meet:** Two extrusion segments meet. Refer to installation instructions for additional details.
- Detail C Two Lenses Meet:** Lenses are staggered so that the lens always overlaps where two extrusion segments meet. Refer to installation instructions for additional details.
- Detail D Dry Continuous Connector:** Used to span a corner or traverse a gap, corner, or obstacle in a dry location installation area. For Mud-In applications, the connection is located behind the mounting surface, such as drywall.

Note: Drawings not to scale. Product may differ from examples shown.