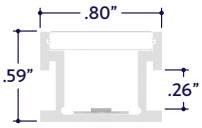


END VIEWS / DIMENSIONS



MOUNTING OPTION



1/4" Glass Mount

LENS / OPTICS APPEARANCE



Clear Lens (CL)
Visible Diode Image
0% Light Loss



50% Semi-Frosted Lens (SF)
Slight Diode Image
12.5% Light Loss



100% Frosted Lens (F)
No Diode Image: Line of Light
25% Light Loss

GENERAL FEATURES

| | |
|----------------------------|---|
| Applications | Direct View, Accent, Decorative Lighting |
| Lens | Clear, 50% Semi-Frosted, or 100% Frosted |
| Viewing Angle | 120° |
| Length | Built to Order (+/- 1/8" Tolerance) |
| Construction | Aluminum Extrusion |
| Weight | 0.203 lbs per foot |
| Mounting | Glass Mount (Adhesive) |
| Listing | Dry or Wet Location UL2108, 67.1.9, 60.4, CSA C22.2 #9 UL8750, CSA250 |
| Driver | Remote (Sold Separately) |
| Temperature Ratings | Operating / Startup: -20° to 48°C (-4° to 120°F) Storage: -40° to 76°C (-40° to 170°F) |
| Installation Link | |

ELECTRICAL

| | |
|---|--------------------------|
| Dimming | DMX |
| Maximum Run (Class 1 Applications) | 26' (4.5W) 33' (3.6W) |
| Maximum Run (Class 2 Applications) | 21' (4.5W) 26' (3.6W) |
| Luminaire Voltage | 24VDC |

SPECIFY PRODUCT CODE | CHOOSE FROM DROP DOWNS

| Series | Lens | Watts per Foot | Dimming | LED | Listing | Finish | Luminaire Length |
|------------------------------|----------------------------|------------------|-----------------------------|---------------------|-----------------------------------|-----------------------------------|--|
| A8-ZUDA-GLD | | | DMX | DWH | | | |
| ZUDA Glass Duo (A8-ZUDA-GLD) | Clear Lens (CL) | 3.6 Watts (3.6W) | DMX-512* ¹ (DMX) | 2400K - 6400K (DWH) | Indoor (DRY) | Natural Silver* ³ (NA) | Specify Length in Feet & Inches Example: 7'8" |
| | 50% Semi-Frosted Lens (SF) | 4.5 Watts (4.5W) | | | Outdoor* ² (WET) | Polished (PA) White (WH) | |
| | 100% Frosted Lens (F) | | | | Outdoor IP67* ² (IP67) | Satin / Silver (SA) Black (BK) | |

*¹ Default DMX address of each luminaire is 001. Consult third party DMX commissioner to modify at time of installation.

*² Run lengths are required for Wet & IP67 Location products. Provide run lengths at time of order.

*³ Default finish is Natural Silver (NA) if left blank.



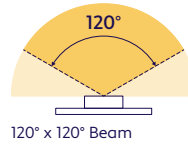
LAMP SPECIFICATIONS

| Lamp Number | Correlated Color Temperature (CCT) Gamut | L70 LED Life |
|-------------|--|--------------|
| DWH | Dynamic White: 2400K - 6400K | 50,000 hrs. |

LAMP FEATURES

| | |
|-----------|-----------------------------------|
| Lamp Type | Dynamic White LEDs: 2400K - 6400K |
| CRI | > 90 |

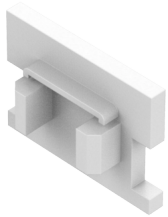
BEAM ANGLE



DRIVERS

| Dimming Selection | Product Code | Link to Specification Sheet / URL |
|-------------------|--------------|-----------------------------------|
| DMX-512* | (DMX) | |

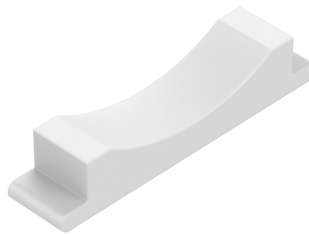
END CAP & CHANNEL CLIP (Sold Separately)



End Cap
(A8-ZUDA-GLD-EC)

| Part # | Qty. |
|----------------|------|
| A8-ZUDA-GLD-EC | |

Note: Use 1 End Cap for each run termination.



Channel Clip
(A8-ZUDA-GLD-CP)

| Part # | Qty. |
|----------------|------|
| A8-ZUDA-GLD-CP | |

Note: Use 1 Channel Clip every 6" for downward facing, outward facing, or vertically mounted applications.

DRY CONNECTORS (Sold Separately)



| Part # | Length | Qty. |
|---------------|--------|------|
| A8-PC-3P-DRY- | 36" | |
| A8-PC-3P-DRY- | | |

Note: Connector style subject to change without notice. Refer to cut sheet for wiring colors.



| Part # | Length | Qty. |
|---------------|--------|------|
| A8-CC-3P-DRY- | 3" | |
| A8-CC-3P-DRY- | | |

Note: Connector style subject to change without notice. Refer to cut sheet for wiring colors.

DMX CONTROLLERS (Sold Separately)



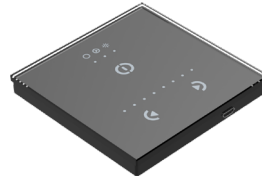
| Part # | Qty. |
|-----------------------------------|------|
| DRV100-E-UNV-24VDC-DMX-DRY | |

Note: Use 1 Driver / Decoder for each run up to 100 Watts.



| Part # | Qty. |
|----------------------|------|
| CTRL-DMX-RGBX | |

Note: Use 1 Decoder for each run up to 96 Watts. Not required if using all-in-one driver / decoder (DRV100-E).



| Part # | Qty. |
|----------------------|------|
| CTRL-DMX-128C | |

Note: Controls up to 128 DMX Channels.

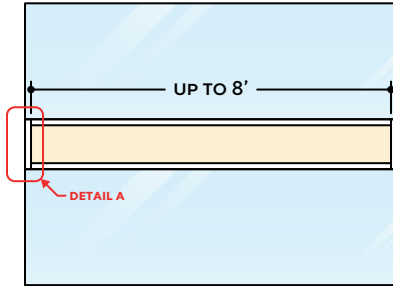


| Part # | Qty. |
|-----------------------|------|
| CTRL-DMX-1024C | |

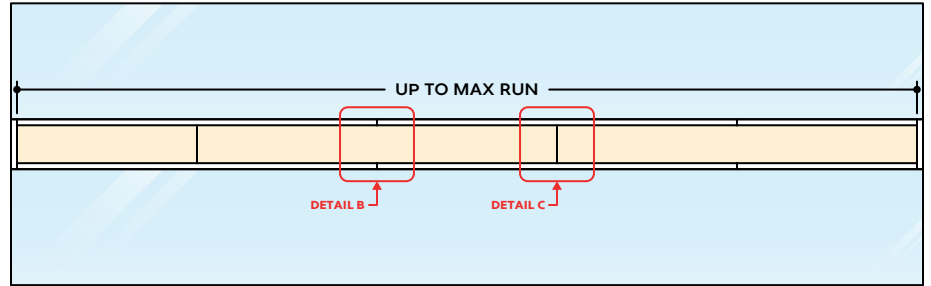
Note: Controls up to 1024 DMX Channels.

DESIGN GUIDELINES

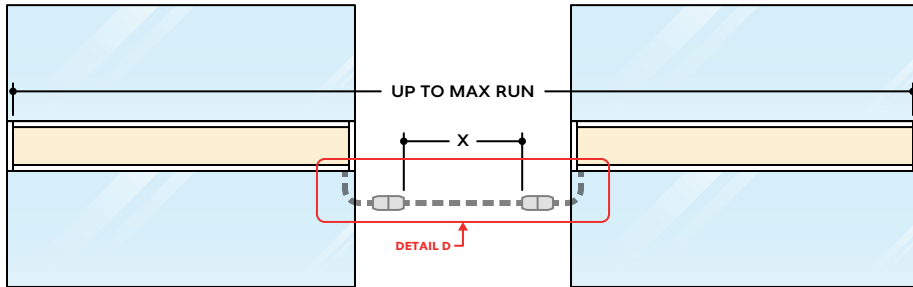
Individual Fixture



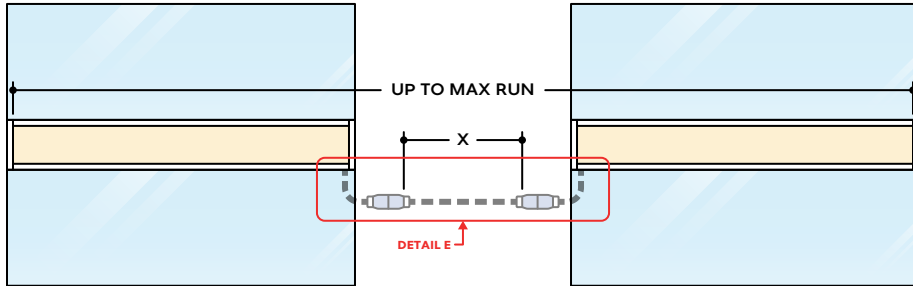
Continuous Run (Dry or Wet Location)



Runs with Continuous Connector (Dry Location)



Runs with Continuous Connector (Wet Location)

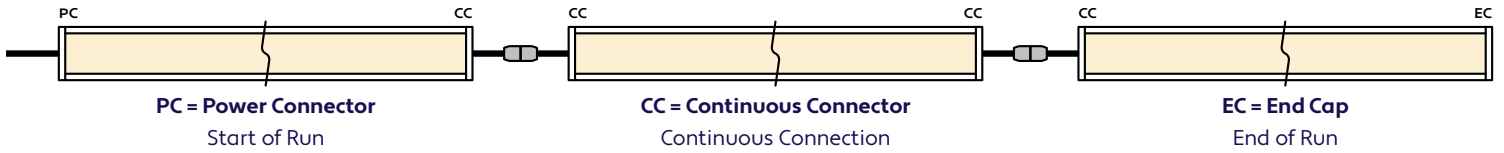


KEY

- Detail A End Cap:** Used to terminate each end of a run.
- Detail B Two Extrusions Meet:** Two extrusion segments meet, held together by a mounting clip. Refer to installation instructions for additional details.
- Detail C Two Lenses Meet:** Lenses are staggered so that the lens always overlaps where two extrusion segments meet. Refer to installation instructions for additional details.
- Detail D Dry Continuous Connector:** Used to span a corner or traverse a gap, corner, or obstacle in a dry location installation area.
- Detail E Wet Continuous Connector:** Used to span a corner or traverse a gap, corner, or obstacle in a wet location installation area.

Note: Drawings not to scale. Product may differ from examples shown.

CONNECTION SEQUENCE

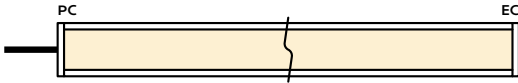


- Specifying a layout is not required to place an order.
- Configuration code applies to full length ordered and will be built per the Continuous Run models on Design Guidelines.
- Connector type subject to change based on availability and listing. Refer to Design Guidelines for details.

HOW TO SPECIFY CONFIGURATIONS

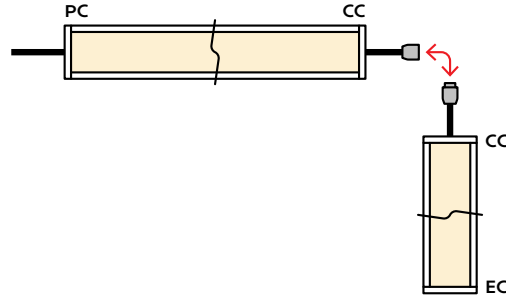
Example: 20' Straight Run

- 1x A8-ZUDA-GLD-CL-3.6W-DMX-DWH-DRY-NA-20'-PC-EC



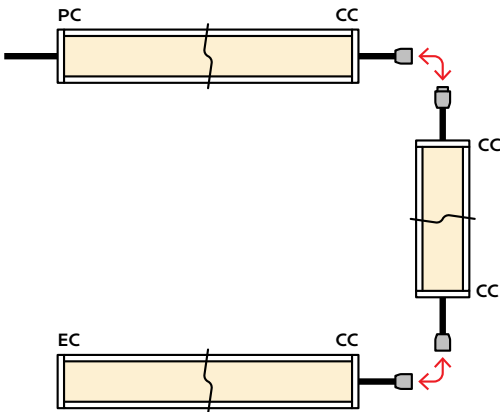
Example: 25' L-Shaped Run

- 1x A8-ZUDA-GLD-CL-3.6W-DMX-DWH-WET-NA-12'-PC-CC
- 1x A8-ZUDA-GLD-CL-3.6W-DMX-DWH-WET-NA-6'-CC-EC



Example: 30' U-Shaped Run

- 1x A8-ZUDA-GLD-CL-3.6W-DMX-DWH-DRY-NA-6'-PC-CC
- 1x A8-ZUDA-GLD-CL-3.6W-DMX-DWH-DRY-NA-18'-CC-CC
- 1x A8-ZUDA-GLD-CL-3.6W-DMX-DWH-DRY-NA-6'-CC-EC



Example: 28' Rectangle Shaped Run

- 1x A8-ZUDA-GLD-CL-3.6W-DMX-DWH-WET-NA-11'-PC-CC
- 1x A8-ZUDA-GLD-CL-3.6W-DMX-DWH-WET-NA-3'-CC-CC
- 1x A8-ZUDA-GLD-CL-3.6W-DMX-DWH-WET-NA-11'-CC-CC
- 1x A8-ZUDA-GLD-CL-3.6W-DMX-DWH-WET-NA-3'-CC-EC

