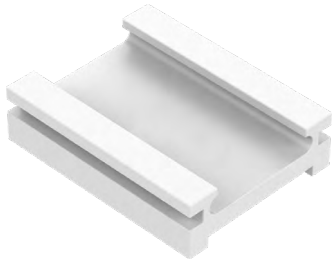


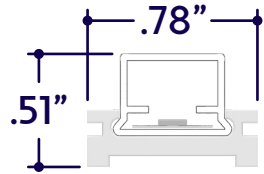
# ZUDA Tape

A8-ZUDA-TAPE-MCS-WET

## Perspective View

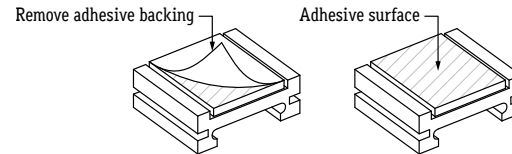


## Assembled Dimensions



- 1 Measure area where luminaire will be installed. Use a laser line to create a reference line along installation area, ensuring consistent alignment of mounting clips. Mark location where each mounting clip will be installed along reference line.
- 2 Use 1 mounting clip every 6', rounded up. Use a minimum of 2 mounting clips per luminaire segment. For vertical applications, create a stopper at the bottom of the run to prevent sliding.

- 3 Prepare for mounting by removing adhesive backing from mounting clips.



- 4 Adhere mounting clips to surface, then snap luminaire into mounting clips.

