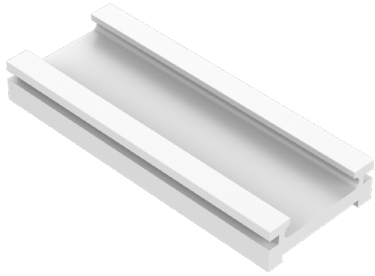
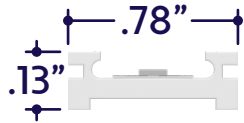




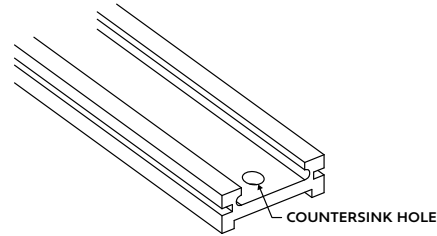
Perspective View



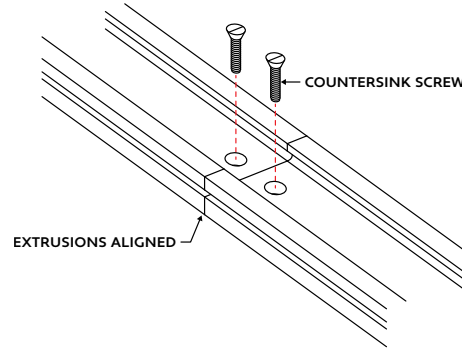
Assembled Dimensions



- 1 Measure area where luminaire will be installed. Use a laser line to create a reference line along installation area, ensuring consistent alignment of mounting channels. Mark location where each channel will be installed along reference line.
- 2 Lay mounting channels along reference line and drill at least 3 countersink holes per channel. Drill additional holes as needed.

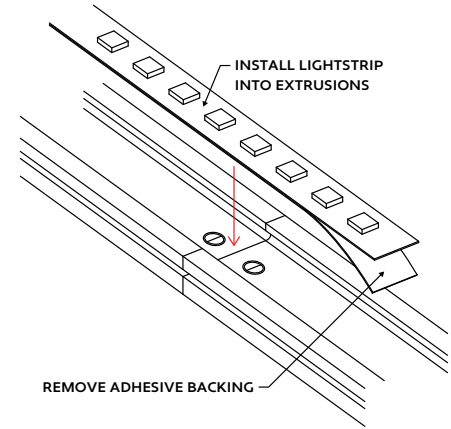


- 3 Screw mounting channels to surface using countersink screws. **Note:** Ensure channels are aligned.



A8 Series | LED Tape ZUDA Tape - Mounting Channel (A8-ZUDA-TAPE-UC)

- 4 After all mounting channels have been securely installed, remove adhesive backing from lightstrip and stick in place along channel, ensuring lightstrip is flat and secure.



- 5 Ensure lightstrip is secured in place and is free of twists, tangles, creases, bumps, or overlaps.

