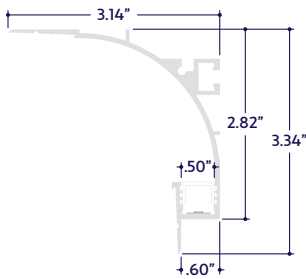
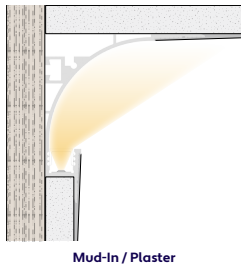


END VIEWS / DIMENSIONS



MOUNTING OPTION



GENERAL FEATURES

Applications	Mud-In, Accent, Decorative, Surface, Recessed Lighting
Lens	50% Semi-Frosted or 100% Frosted
Viewing Angle	120°
Length	Built to Order (+/- 1/8" Tolerance)
Construction	Aluminum Extrusion
Field Cutting	Dry and Damp Location Field Cuttable
Weight	0.80 lbs per foot
Mounting	Mud-In
Listing	Dry or Damp Location UL2108, 67.1.9, 60.4, CSA C22.2 #9 UL8750, CSA850
Driver	Remote (Sold Separately)
Closet Rating	Up to 3.6 Watts per Foot Maximum
Temperature Ratings	Operating / Startup: -20° to 48°C (-4° to 120°F) Storage: -40° to 76°C (-40° to 170°F)
Installation Link	

ELECTRICAL

Dimming	0-10V, Casambi Ready
Maximum Run (Class 2 Applications)	14' (6.5W), 17' (5.5W), 21' (4.5W), 26' (3.6W), 36'(1.5W, 2.5W)
Luminaire Voltage	24VDC

SPECIFY PRODUCT CODE | CHOOSE FROM DROP DOWNS

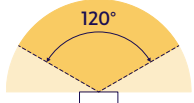
Series	Lens	Watts per Foot	Dimming	LED	Listing	Finish	Luminaire Length
A8-ZYPO-FAH				DWM		WH	
ZYPO Flush Arc Half (A8-ZYPO-FAH)	50% Semi-Frosted Lens (SF)	1.5 Watts (1.5W)	0-10V; 100% - 1% (10V)	Dim to Warm: 3000K - 2200K (DWM)	Indoor (DAMP)	White* (WH)	Specify Length in Feet & Inches Example: 7'8"
		2.5 Watts (2.5W)			Indoor (DRY)		
	100% Frosted Lens: Line of Light (F)	3.6 Watts (3.6W)	Casambi Ready (CAS)				
		4.5 Watts (4.5W)					
		5.5 Watts (5.5W)					
6.5 Watts (6.5W)							

* Default finish is White (WH) if left blank.

LAMP FEATURES

Lamp Type	Dim to Warm LEDs
CRI	> 90
Efficacy	103 Lumens per Watt

BEAM ANGLE



120° x 120° Beam

LAMP SPECIFICATIONS

Lamp Number	Correlated Color Temperature (CCT)	Dimming Percentage	L70 LED Life
DWM	2200 Kelvin	25%	60,000 hrs.
	2250 Kelvin	50%	
	2500 Kelvin	75%	
	3000 Kelvin	100%	

LENS / OPTICS APPEARANCE



50% Semi-Frosted Lens (SF)
Slight Diode Image
12.5% Light Loss



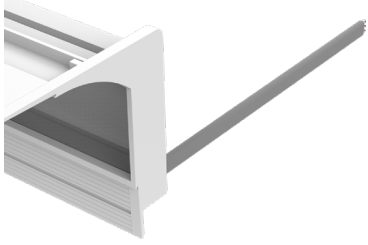
100% Frosted Lens (F)
No Diode Image: Line of Light
25% Light Loss

DRIVERS

Dimming Selection	Product Code	Link to Specification Sheet / URL
0-10V: 100% - 1%	(10V)	
Casambi Ready	(CAS)	

CONNECTORS (Sold Separately)

Note: Connectors are factory assembled to each run length.
Connectors are subject to change without notice.

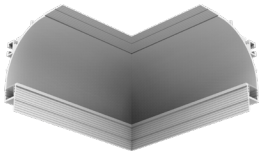


Dry Plenum Rated Power Connector
(20/3 Gauge Wire)
(A8-ZYPO-FAH-PC-PLM-DRY-X)
X = Specify Length, 36" Default, 25' Maximum

Part #	Length	Qty.
A8-ZYPO-FAH-PC-PLM-DRY-	36"	
A8-ZYPO-FAH-PC-PLM-DRY-		

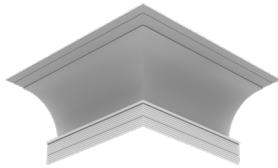
Note: Specify 1 Power Connector for each lead required.
Power Connectors are factory assembled to each length.

MITERED CORNERS (Sold Separately)



90° Internal Corner
(A8-ZYPO-FAH-90D-IN)

Part #	Qty.
A8-ZYPO-FAH-90D-IN	



90° External Corner
(A8-ZYPO-FAH-90D-EX)

Part #	Qty.
A8-ZYPO-FAH-90D-EX	

END CAPS (Sold Separately)



Left End Cap
(A8-ZYPO-FAH-ECL-WH)

Part #	Qty.
A8-ZYPO-FAH-ECL-WH	

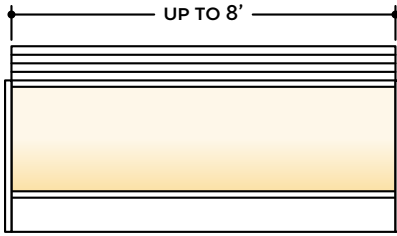


Right End Cap
(A8-ZYPO-FAH-ECR-WH)

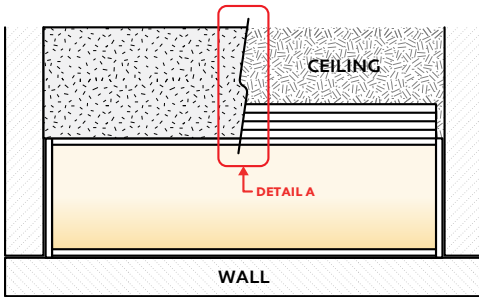
Part #	Qty.
A8-ZYPO-FAH-ECR-WH	

DESIGN GUIDELINES

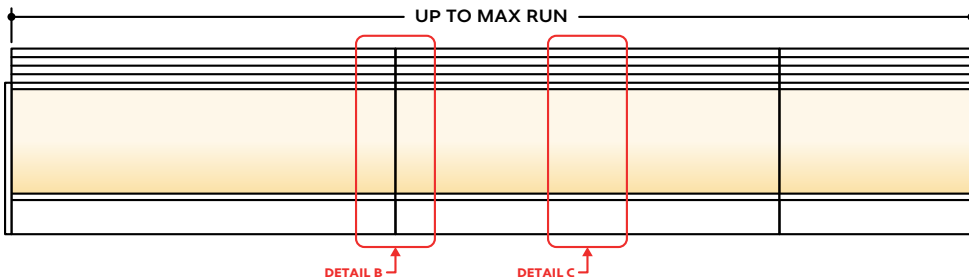
Individual Fixture



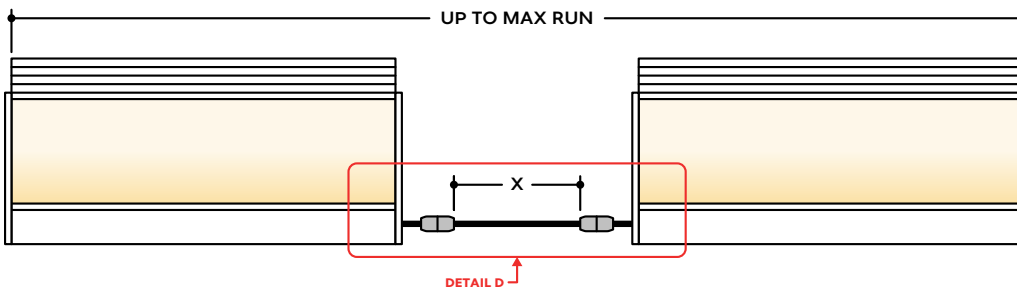
Individual Fixture with Mud-In



Continuous Run



Runs with Continuous Connector



KEY

- Detail A Mud-In:** Plaster is used to cover the flanges of the extrusion, leaving a flush appearance. Refer to installation instructions for details.
- Detail B Two Extrusions Meet:** Two extrusion segments meet. Refer to installation instructions for additional details.
- Detail C Two Lenses Meet:** Lenses are staggered so that the lens always overlaps where two extrusion segments meet. Refer to installation instructions for additional details.
- Detail D Dry Continuous Connector:** Used to span a corner or traverse a gap, corner, or obstacle in a dry location installation area. For Mud-In applications, the connection is located behind the mounting surface, such as drywall.

Note: Drawings not to scale. Product may differ from examples shown.