

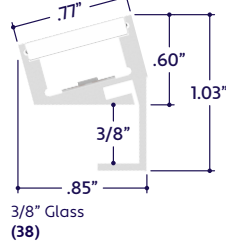
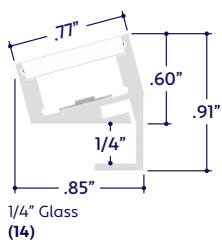
### GENERAL FEATURES

<b>Applications</b>	Direct View, Accent, Decorative Lighting
<b>Lens</b>	Clear, 50% Semi-Frosted, or 100% Frosted
<b>Viewing Angle</b>	120°
<b>Length</b>	Built to Order (+/- 1/8" Tolerance)
<b>Construction</b>	Aluminum Extrusion
<b>Field Cutting</b>	Dry and Wet Location Field Cuttable
<b>Weight</b>	0.264 lbs per foot
<b>Mounting</b>	Glass Mount (Adhesive)
<b>Driver</b>	Remote (Sold Separately)
<b>Listing</b>	Dry, Wet, or IP67 Location UL2108, 67.1.9, 60.4, CSA C22.2 #9 UL8750, CSA250
<b>Temperature Ratings</b>	Operating / Startup: -20° to 48°C (-4° to 120°F) Storage: -40° to 76°C (-40° to 170°F)
<b>Installation Link</b>	

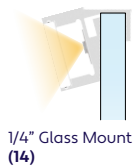
### ELECTRICAL

<b>Dimming</b>	0-10V
<b>Maximum Run</b> (Class 2 Applications)	19' (4.3W)
<b>Luminaire Voltage</b>	24VDC

### END VIEWS / DIMENSIONS



### MOUNTING OPTIONS



### SPECIFY PRODUCT CODE | CHOOSE FROM DROP DOWNS

Series	Glass Size	Lens	Watts per Foot	Dimming	LED	Listing	Finish	Luminaire Length
<b>A8-ZYPO-GLS</b>			<b>4.3W</b>	<b>10V</b>	<b>DWM</b>			
ZYPO Glass (A8-ZYPO-GLS)	For 1/4" Glass (14)	Clear Lens (CL)	4.3 Watts (4.3W)	0-10V: 100% - 1% (10V)	Dim to Warm: 3000K - 2200K (DWM)	Indoor (DRY)	Natural Silver* <sup>2</sup> (NA)	Specify Length in Feet & Inches Example: 7'8"
	For 3/8" Glass (38)	50% Semi-Frosted Lens (SF)				Outdoor* <sup>1</sup> (WET)	Polished (PA) White (WH)	
		100% Frosted Lens: Line of Light (F)				Outdoor IP67* <sup>1</sup> (IP67)	Satin / Silver (SA) Black (BK)	

\*<sup>1</sup> Run lengths are required for Wet & IP67 Location products. Provide run lengths at time of order.

\*<sup>2</sup> Default finish is Natural Silver (NA) if left blank.



# A8 Series | LED Tape

## ZYPO Glass

(A8-ZYPO-GLS)

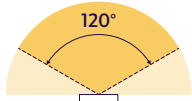
TYPE



### LAMP FEATURES

Lamp Type	Dim to Warm LEDs
CRI	> 90
Efficacy	148 Lumens per Watt @ 25% 137 Lumens per Watt @ 50% 118 Lumens per Watt @ 75% 92 Lumens per Watt @ 100%

### BEAM ANGLE



120° x 120° Beam

### LAMP SPECIFICATIONS

Lamp Number	Correlated Color Temperature (CCT) @ Dimming Percentage	L70 LED Life
DWM	2400 Kelvin @ 25%	60,000 hrs.
	2600 Kelvin @ 50%	
	2800 Kelvin @ 75%	
	3000 Kelvin @ 100%	

### LENS / OPTICS APPEARANCE



Clear Lens (**CL**)  
Visible Diode Image  
0% Light Loss



50% Semi-Frosted Lens (**SF**)  
Slight Diode Image  
12.5% Light Loss

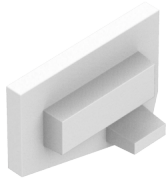


100% Frosted Lens (**F**)  
No Diode Image: Line of Light  
25% Light Loss

### DRIVERS

Dimming Selection	Product Code	Link to Specification Sheet / URL
0-10V: 100% - 1%	(10V)	

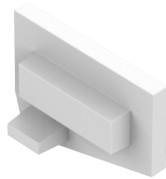
### END CAPS & CHANNEL CLIP (Sold Separately)



Left End Cap  
(A8-ZYPO-GLS-ECL)

Part #	Qty.
A8-ZYPO-GLS-ECVCL	

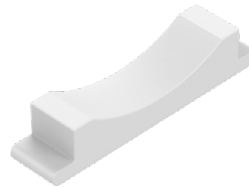
**Note:** Use 1 Right End Cap for each left termination.



Right End Cap  
(A8-ZYPO-GLS-ECR)

Part #	Qty.
A8-ZYPO-GLS-ECR	

**Note:** Use 1 Right End Cap for each right termination.



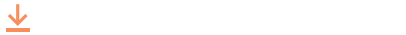
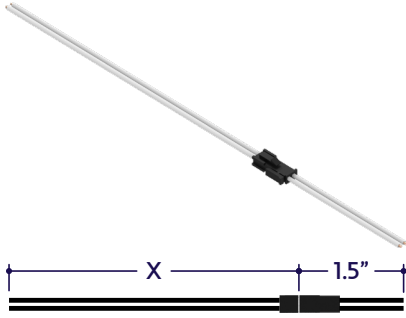
Channel Clip  
(A8-ZYPO-GLS-CP)

Part #	Qty.
A8-ZYPO-GLS-CP	

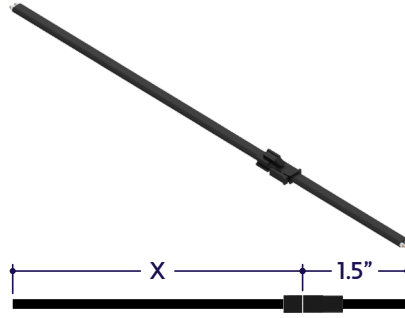
**Note:** Use 1 Channel Clip every 6" for downward facing, outward facing, or vertically mounted applications.

### DRY CONNECTORS (Sold Separately)

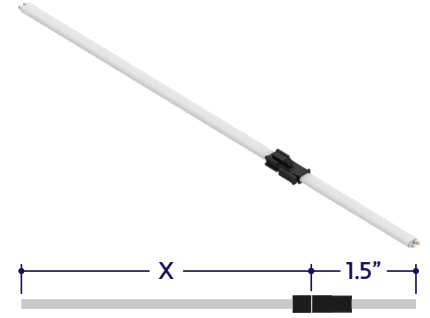
**Note:** Connector style subject to change without notice. Refer to cut sheet or installation instructions for wiring colors.



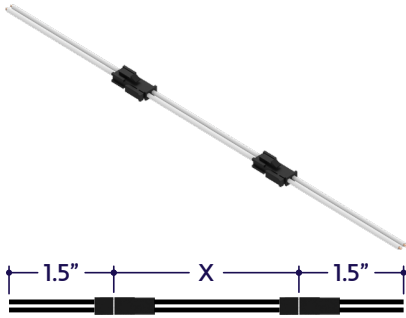
Part #	Length	Qty.
A8-PC-2P-DRY-	36"	
A8-PC-2P-DRY-		



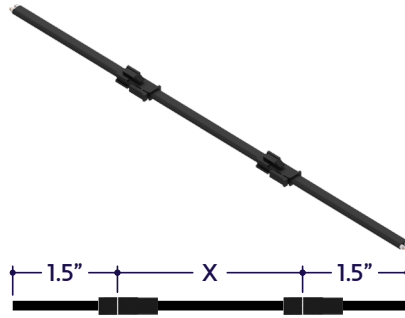
Part #	Length	Qty.
A8-PC-2P-DRY-BK-	36"	
A8-PC-2P-DRY-BK-		



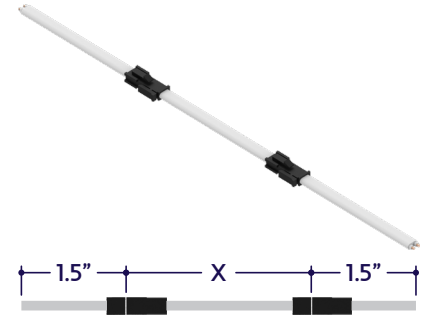
Part #	Length	Qty.
A8-PC-2P-DRY-WH-	36"	
A8-PC-2P-DRY-WH-		



Part #	Length	Qty.
A8-CC-2P-DRY-	3"	
A8-CC-2P-DRY-		



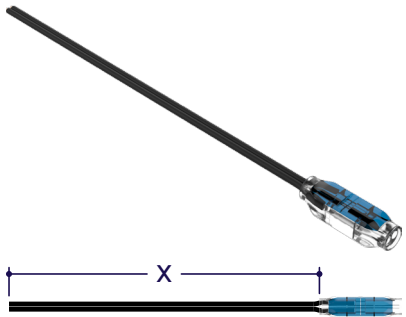
Part #	Length	Qty.
A8-CC-2P-DRY-BK-	3"	
A8-CC-2P-DRY-BK-		



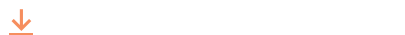
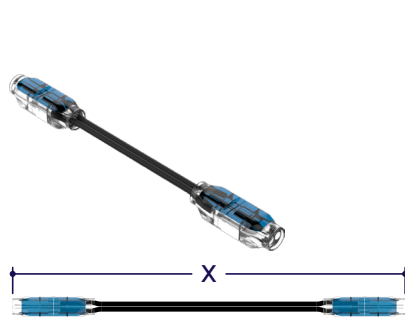
Part #	Length	Qty.
A8-CC-2P-DRY-WH-	3"	
A8-CC-2P-DRY-WH-		

### WET CONNECTORS (Sold Separately)

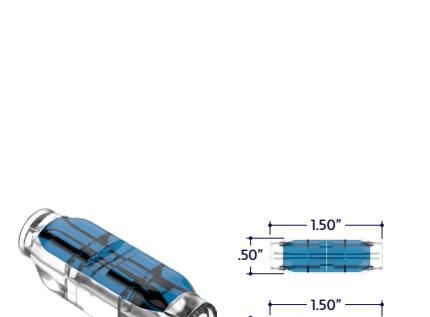
**Note:** Connector style subject to change without notice. Refer to cut sheet or installation instructions for wiring colors.



Part #	Length	Qty.
A8-PC-2P-WET-	36"	
A8-PC-2P-WET-		



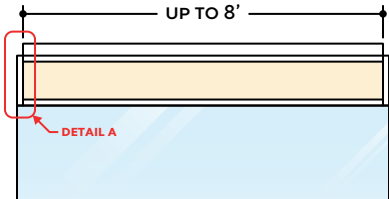
Part #	Length	Qty.
A8-CC-2P-WET-	3"	
A8-CC-2P-WET-		



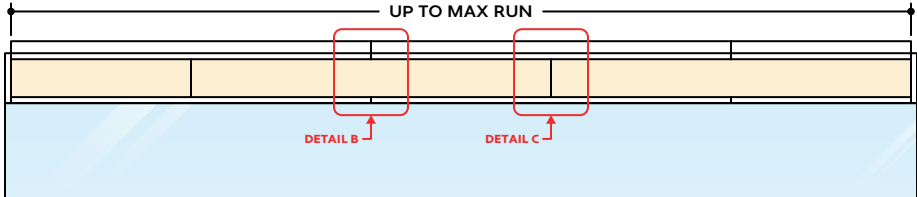
Part #	Length	Qty.
A8-SC-2P-WET		

## DESIGN GUIDELINES

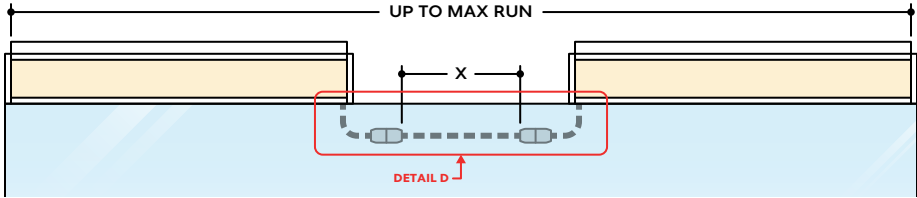
### Individual Fixture



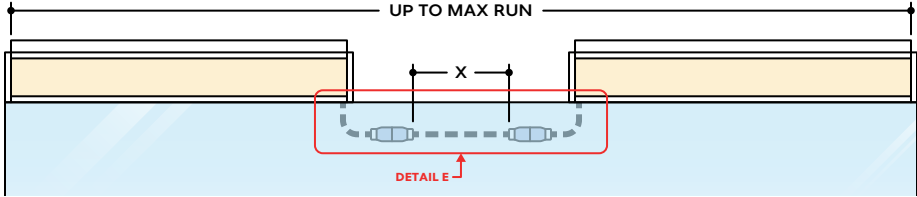
### Continuous Run (Dry Location)



### Runs with Continuous Connector (Dry Location)



### Runs with Continuous Connector (Wet Location)

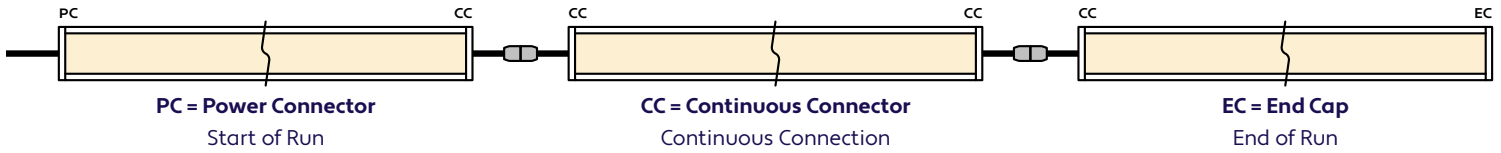


## KEY

<b>Detail A</b>	<b>End Cap:</b> Used to terminate each end of a run.
<b>Detail B</b>	<b>Two Extrusions Meet:</b> Two extrusion segments meet, held together by a mounting clip. Refer to installation instructions for additional details.
<b>Detail C</b>	<b>Two Lenses Meet:</b> Lenses are staggered so that the lens always overlaps where two extrusion segments meet. Refer to installation instructions for additional details.
<b>Detail D</b>	<b>Dry Continuous Connector:</b> Used to span a corner or traverse a gap, corner, or obstacle in a dry location installation area.
<b>Detail E</b>	<b>Wet Continuous Connector:</b> Used to span a corner or traverse a gap, corner, or obstacle in a wet location installation area.

**Note:** Drawings not to scale. Product may differ from examples shown.

## CONNECTION SEQUENCE

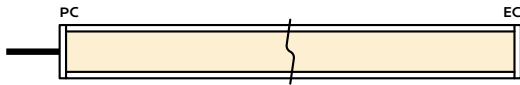


- Specifying a layout is not required to place an order.
- Configuration code applies to full length ordered and will be built per the Continuous Run models on Design Guidelines.
- Connector type subject to change based on availability and listing. Refer to Design Guidelines for details.

## HOW TO SPECIFY CONFIGURATIONS

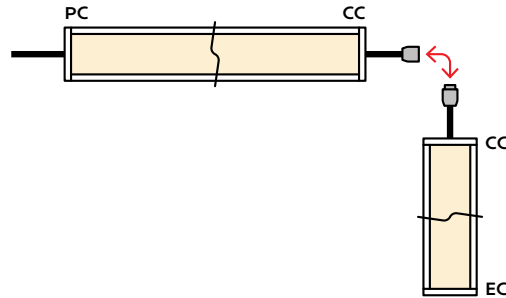
### Example: 20' Straight Run

- 1x A8-ZYPO-GLS-14-CLS-4.3W-10V-DWM-DRY-NA-20'-PC-EC



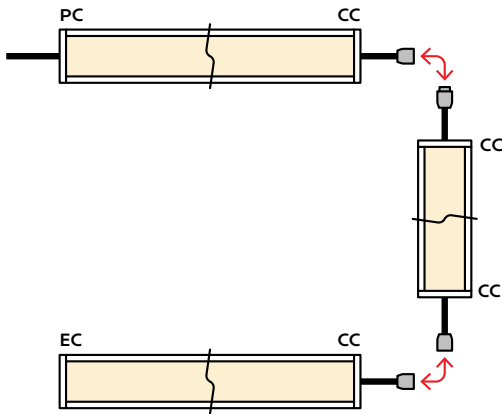
### Example: 25' L-Shaped Run

- 1x A8-ZYPO-GLS-14-CLS-4.3W-10V-DWM-WET-NA-12'-PC-CC
- 1x A8-ZYPO-GLS-14-CLS-4.3W-10V-DWM-WET-NA-6'-CC-EC



### Example: 30' U-Shaped Run

- 1x A8-ZYPO-GLS-14-CLS-4.3W-10V-DWM-DRY-NA-6'-PC-CC
- 1x A8-ZYPO-GLS-14-CLS-4.3W-10V-DWM-DRY-NA-18'-CC-CC
- 1x A8-ZYPO-GLS-14-CLS-4.3W-10V-DWM-DRY-NA-6'-CC-EC



### Example: 28' Rectangle Shaped Run

- 1x A8-ZYPO-GLS-14-CLS-4.3W-10V-DWM-WET-NA-11'-PC-CC
- 1x A8-ZYPO-GLS-14-CLS-4.3W-10V-DWM-WET-NA-3'-CC-CC
- 1x A8-ZYPO-GLS-14-CLS-4.3W-10V-DWM-WET-NA-11'-CC-CC
- 1x A8-ZYPO-GLS-14-CLS-4.3W-10V-DWM-WET-NA-3'-CC-EC

