

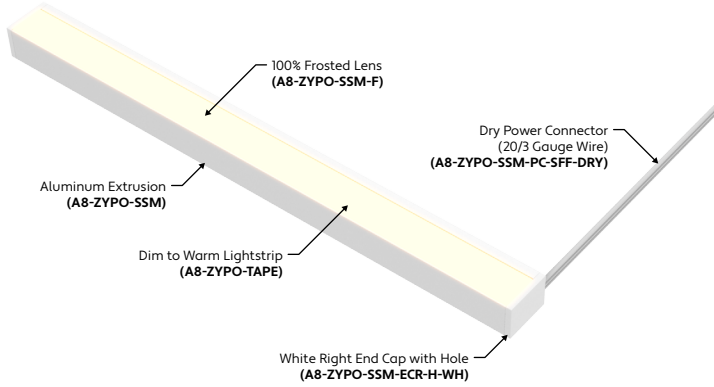


A8 Series | LED Tape

ZYPO Surface Side Mount

(A8-ZYPO-SSM)

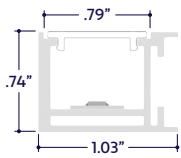
TYPE



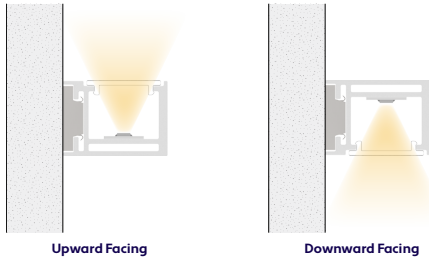
GENERAL FEATURES

Applications	Accent, Decorative, Surface, Recessed, Pendant Lighting
Lens	Clear, 50% Semi-Frosted, or 100% Frosted
Optics & Asymmetric	15°, 30°, 45°, 60°, 120°, or Asymmetric Optics
Length	Built to Order (+/- 1/8" Tolerance)
Construction	Aluminum Extrusion
Field Cutting	Dry Location Field Cuttable
Weight	0.248 lbs per foot
Mounting	Mounting Channel or Mounting Clips (Sold Separately)
Listing	Dry or Damp Location UL2108, 67.1.9, 60.4, CSA C22.2 #9 UL8750, CSA250
Driver	Remote (Sold Separately)
Closet Rating	Up to 3.6 Watts per Foot Maximum
Temperature Ratings	Operating / Startup: -20° to 48°C (-4° to 120°F) Storage: -40° to 76°C (-40° to 170°F)
Installation Link	

END VIEW / DIMENSIONS



MOUNTING OPTIONS



ELECTRICAL

Dimming	0-10V, Casambi Ready
Maximum Run (Class 2 Applications)	14' (6.5W), 17' (5.5W), 21' (4.5W), 26' (3.6W), 36'(1.5W, 2.5W)
Luminaire Voltage	24VDC

SPECIFY PRODUCT CODE | CHOOSE FROM DROP DOWNS

Series	Lens / Optics	Watts per Foot	Dimming	LED	Listing	Finish	Luminaire Length
A8-ZYPO-SSM				DWM			
ZYPO Surface Side Mount (A8-ZYPO-SSM)	Clear Lens (CL)	1.5 Watts (1.5W)	0-10V: 100% - 1% (10V)	Dim to Warm: 3000K - 2000K (DWM)	Indoor (DAMP) Indoor (DRY)	Natural Silver* ² (NA) Polished (PA) White (WH) Satin / Silver (SA) Black (BK)	Specify Length in Feet & Inches Example: 7'8"
	50% Semi-Frosted Lens (SF)	2.5 Watts (2.5W)					
	100% Frosted Lens: Line of Light (F)	3.6 Watts (3.6W) 4.5 Watts (4.5W)	Casambi Ready (CAS)				
	Asymmetric Lens Left* (ASML)	5.5 Watts (5.5W)					
	Asymmetric Lens Right (ASMR)	6.5 Watts (6.5W)					
	15° Optics (15D)						
	30° Optics (30D)						
	45° Optics (45D)						
	60° Optics (60D)						

*¹ Default Asymmetric Direction is Left (ASML) if unspecified.
*² Default finish is Natural Silver (NA) if left blank.



LAMP FEATURES

Lamp Type	Dim to Warm LEDs
CRI	> 90
Efficacy	103 Lumens per Watt

LAMP SPECIFICATIONS

Lamp Number	Correlated Color Temperature (CCT)	Dimming Percentage	L70 LED Life
DWM	2000 Kelvin	2%	60,000 hrs.
	2400 Kelvin	70%	
	2700 Kelvin	85%	
	3000 Kelvin	100%	

OPTICS ORIENTATION



Asymmetric Lens Left (ASML)

Asymmetric Lens Right (ASMR)

Note: Default Asymmetric Direction is Left (ASML) if unspecified.

DRIVERS

Dimming Selection	Product Code	Link to Specification Sheet / URL
0-10V: 100% - 1%	(10V)	
Casambi Ready	(CAS)	

LENS / OPTICS APPEARANCE



Clear Lens (CL)
Visible Diode Image
0% Loss Factor



50% Semi-Frosted Lens (SF)
Slight Diode Image
12.5% Loss Factor



100% Frosted Lens (F)
No Diode Image: Line of Light
25% Loss Factor

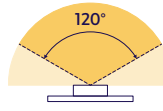


Asymmetric Lens (ASML, ASMR)
Slight Diode Image
18% Loss Factor

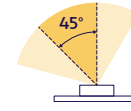


Optic Lens (15D, 30D, 45D, 60D)
Slight Diode Image
18% Loss Factor

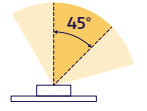
BEAM ANGLES



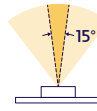
120° x 120° Beam
Clear Lens (CL)
50% Semi-Frosted Lens (SF)
100% Frosted Lens (F)



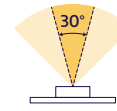
45° x 60° Beam
Asymmetric Lens Left (ASML)



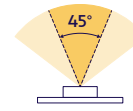
45° x 60° Beam
Asymmetric Lens Right (ASMR)



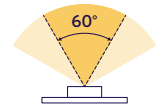
15° x 60° Beam
Optic Lens (15D)



30° x 60° Beam
Optic Lens (30D)



45° x 60° Beam
Optic Lens (45D)

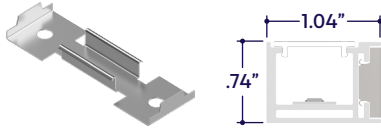


60° x 60° Beam
Optic Lens (60D)



MOUNTING OPTIONS (Sold Separately)

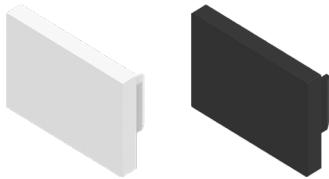
Note: Mounting clips are only available in Natural Silver Finish, unless otherwise specified.



Part #	Qty.
A8-ZYPO-SSM-MC	

Note: Use 1 mounting clip per 2', rounded up.
Click on image to see cut sheet for details.

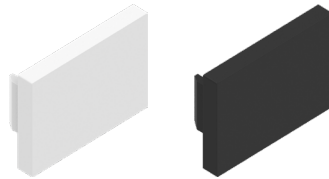
END CAPS (Sold Separately)



Left End Cap
(A8-ZYPO-SSM-ECL-X)
X = Specify Finish: White (WH) or Black (BK)

Part #	Qty.
A8-ZYPO-SSM-ECL-WH	
A8-ZYPO-SSM-ECL-BK	

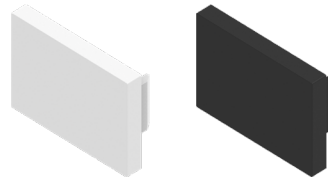
Note: Default Finish is Black (BK) if unspecified.



Right End Cap
(A8-ZYPO-SSM-ECR-X)
X = Specify Finish: White (WH) or Black (BK)

Part #	Qty.
A8-ZYPO-SSM-ECR-WH	
A8-ZYPO-SSM-ECR-BK	

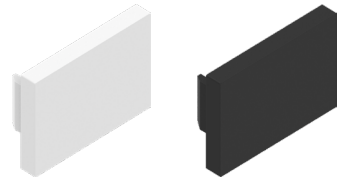
Note: Default Finish is Black (BK) if unspecified.



Left End Cap with Exit Hole
(A8-ZYPO-SSM-ECL-H-X)
X = Specify Finish: White (WH) or Black (BK)

Part #	Qty.
A8-ZYPO-SSM-ECL-H-WH	
A8-ZYPO-SSM-ECL-H-BK	

Note: Default Finish is Black (BK) if unspecified.



Right End Cap with Exit Hole
(A8-ZYPO-SSM-ECR-H-X)
X = Specify Finish: White (WH) or Black (BK)

Part #	Qty.
A8-ZYPO-SSM-ECR-H-WH	
A8-ZYPO-SSM-ECR-H-BK	

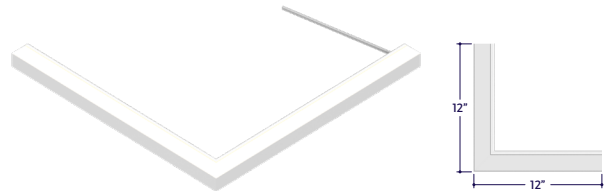
Note: Default Finish is Black (BK) if unspecified.

MITERED CORNERS (Sold Separately)



Part #	Qty.
A8-ZYPO-SSM-90D-IN	

Note: 90D-IN is a lit corner provided with a 3' power lead.

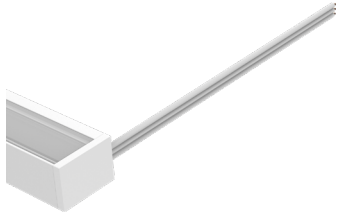


Part #	Qty.
A8-ZYPO-SSM-90D-EX	

Note: 90D-EX is a lit corner provided with a 3' power lead.

DRY CONNECTORS (Sold Separately)

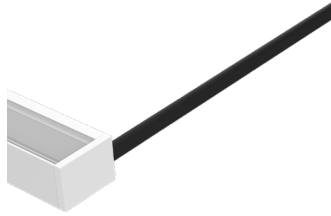
Note: Connectors are factory assembled to each run length. Connectors are subject to change without notice.



Dry Power Connector
(20/3 Gauge Wire)
(A8-ZYPO-SSM-PC-SFF-DRY-X)
X = Specify Length, 36" Default, 25' Maximum

Part #	Length	Qty.
A8-ZYPO-SSM-PC-SFF-DRY-	36"	
A8-ZYPO-SSM-PC-SFF-DRY-		

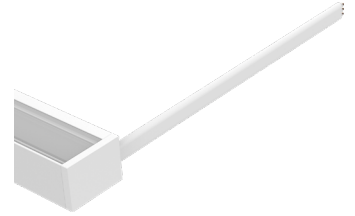
Note: Specify 1 Power Connector for each lead required. Power Connectors are factory assembled to each length.



Dry Power Connector with Black Jacket
(20/3 Gauge Wire)
(A8-ZYPO-SSM-PC-SFF-DRY-BK-X)
X = Specify Length, 36" Default, 25' Maximum

Part #	Length	Qty.
A8-ZYPO-SSM-PC-SFF-DRY-BK-	36"	
A8-ZYPO-SSM-PC-SFF-DRY-BK-		

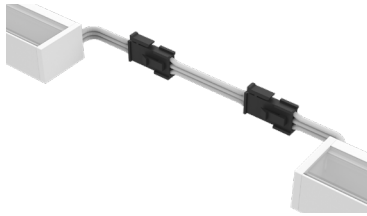
Note: Specify 1 Power Connector for each lead required. Power Connectors are factory assembled to each length.



Dry Power Connector with White Jacket
(20/3 Gauge Wire)
(A8-ZYPO-SSM-PC-SFF-DRY-WH-X)
X = Specify Length, 36" Default, 25' Maximum

Part #	Length	Qty.
A8-ZYPO-SSM-PC-SFF-DRY-WH-	36"	
A8-ZYPO-SSM-PC-SFF-DRY-WH-		

Note: Specify 1 Power Connector for each lead required. Power Connectors are factory assembled to each length.



Dry Continuous Connector
(20/3 Gauge Wire)
(A8-ZYPO-SSM-CC-SFF-DRY-X)
X = Specify Length, 3" Default

Part #	Length	Qty.
A8-ZYPO-SSM-CC-SFF-DRY-	3"	
A8-ZYPO-SSM-CC-SFF-DRY-		

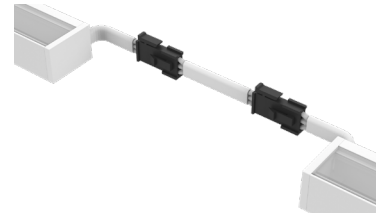
Note: Specify Continuous Connectors to traverse a gap or obstacle. Continuous Connectors are factory assembled to specified lengths.



Dry Continuous Connector with Black Jacket
(20/3 Gauge Wire)
(A8-ZYPO-SSM-CC-SFF-DRY-BK-X)
X = Specify Length, 3" Default

Part #	Length	Qty.
A8-ZYPO-SSM-CC-SFF-DRY-BK-	3"	
A8-ZYPO-SSM-CC-SFF-DRY-BK-		

Note: Specify Continuous Connectors to traverse a gap or obstacle. Continuous Connectors are factory assembled to specified lengths.



Dry Continuous Connector with White Jacket
(20/3 Gauge Wire)
(A8-ZYPO-SSM-CC-SFF-DRY-WH-X)
X = Specify Length, 3" Default

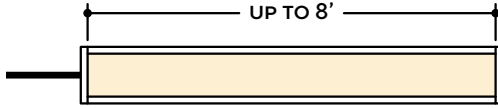
Part #	Length	Qty.
A8-ZYPO-SSM-CC-SFF-DRY-WH-	3"	
A8-ZYPO-SSM-CC-SFF-DRY-WH-		

Note: Specify Continuous Connectors to traverse a gap or obstacle. Continuous Connectors are factory assembled to specified lengths.

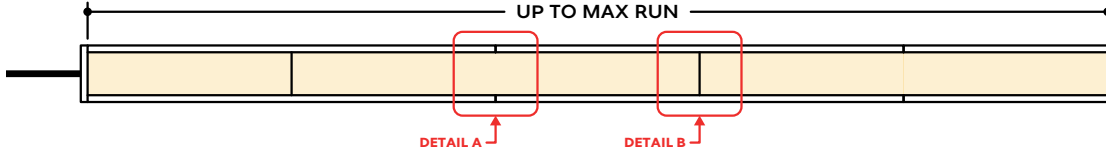


DESIGN GUIDELINES

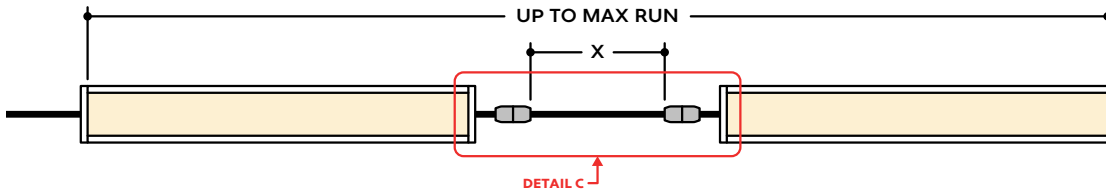
Individual Fixture



Continuous Run (Dry Location)



Runs with Continuous Connector (Dry Location)

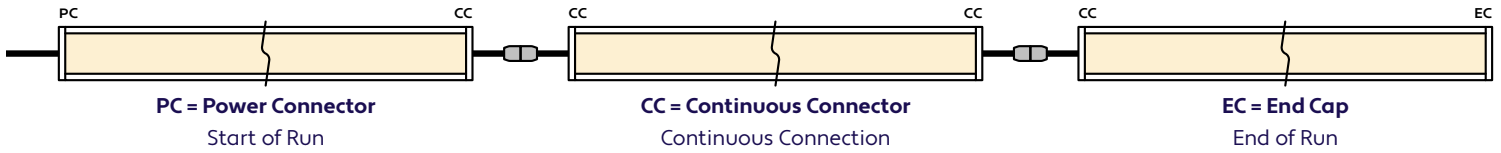


KEY

- Detail A Two Extrusions Meet:** Two extrusion segments meet, held together by a mounting clip. Refer to installation instructions for additional details.
- Detail B Two Lenses Meet:** Lenses are staggered so that the lens always overlaps where two extrusion segments meet. Refer to installation instructions for additional details.
- Detail C Dry Continuous Connector:** Used to span a corner or traverse a gap, corner, or obstacle in a dry location installation area.

Note: Drawings not to scale. Product may differ from examples shown.

CONNECTION SEQUENCE

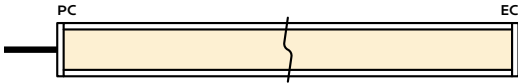


- Specifying a layout is not required to place an order.
- Configuration code applies to full length ordered and will be built per the Continuous Run models on Design Guidelines.
- Connector type subject to change based on availability and listing. Refer to Design Guidelines for details.

HOW TO SPECIFY CONFIGURATIONS

Example: 20' Straight Run

- 1x A8-ZYPO-SSM-CL-4.3W-10V-DWM-DRY-NA-20'-PC-EC



Example: 30' U-Shaped Run

- 1x A8-ZYPO-SSM-CL-4.3W-10V-DWM-DRY-NA-6'-PC-CC
- 1x A8-ZYPO-SSM-CL-4.3W-10V-DWM-DRY-NA-18'-CC-CC
- 1x A8-ZYPO-SSM-CL-4.3W-10V-DWM-DRY-NA-6'-CC-EC

